

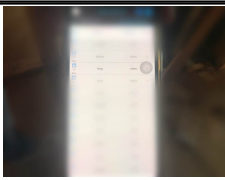



PROJECT INSPECTION

Generated by Safety Compliance App www.safetycompliance.com | www.safetycomplianceapp.com

Company	Helio	Type of Inspection:	SCC USE ONLY: General Contractor Review
Project	Arya	Date of Inspection	November 21, 2022
Inspector Name	Jeremy Chavez	Time of Inspection	11:00 AM

INSPECTION ITEMS

Item		Comment	Photo
Safety Manual	Satisfactory		-
Tailgate Meetings	N/A	The superintendent is working on collecting tailgate meetings.	-
SDS	Satisfactory		-
Daily Inspection	Satisfactory	The superintendent continues to document daily jobsite inspections.	
Sub-Contractor Meetings	N/A		-
Labor Law Posters	Satisfactory		-
Codes/Emergency Posters	Satisfactory		-
Permits	Satisfactory		-
Fire Extinguisher	Satisfactory		-
Building Fire Extinguisher	Satisfactory		-
First Aid Kit	Satisfactory		-
First Aid/CPR Cert	Satisfactory		-
Restrooms/Wash Stations	Satisfactory		-
Waste Containers	Satisfactory		-
Water Supply	Satisfactory	Cool potable water is located throughout the project.	
Shade	Satisfactory		-
Power Tools	Satisfactory		-

Hand Tools	Satisfactory		-
Power Saws	Satisfactory		-
Personal Protective Equipment	Unsatisfactory		-
Electrical Safety	Satisfactory		-
Trenching/Excavation	N/A		-
Confined Space	N/A		-
Fall Protection	Unsatisfactory		-
Ladder Safety	Unsatisfactory		-
Access/Egress	Satisfactory		-
Stairway/Ramps/Runways	Satisfactory		-
Heavy Equipment	N/A		-
Crane/Rigging	N/A		-
Powder Actuated Tools	N/A		-
Cylinder Storage	N/A		-
Floor/Roof/Wall Openings	Unsatisfactory		-
Railing	Satisfactory		-
Material Storage	Satisfactory		-
Impalement Hazards	Satisfactory		-
Traffic Control	N/A		-
Scissor Lifts/Boom Lift	N/A		-
Powered Industrial Trucks	Satisfactory		-
Scaffolding/Shoring	Satisfactory		-
Suspended Scaffolding	N/A		-
Silica Items/Dust	N/A		-
Hot Work	N/A		-
Housekeeping	Satisfactory		-
Roofing Operations	N/A		-
Demolition	N/A		-

UNSATISFACTORY ITEMS

Photo

Comment

Corrective Action



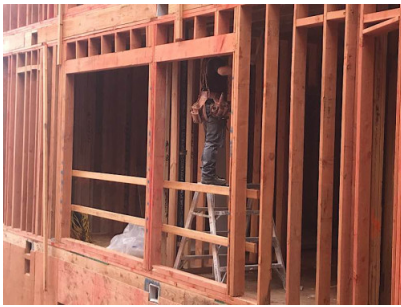
Employee is not wearing the basic PPE required, which includes a hard hat and a hi vis shirt or vest.

Please ensure employees wear the required PPE to come on to the project, which includes a hard hat and a hi vis shirt or vest.



Employee is standing at an unprotected edge with no means of fall protection set up. Danger tape and distance are not a means of fall protection.

Please ensure a physical barrier, such as guardrails are installed. Employees located between the barrier and an unprotected edge must use personal fall protection.



An employee is working on a ladder next to a wall opening, which exposes the employee to a significant fall hazard.

Please ensure means of fall protection is provided, such as guardrails or the use of a mobile scaffold.



There are open holes in the top floor that present fall hazards.

Please ensure floor openings are protected by guardrails or are fully covered, secured, and marked "OPENING DO NOT REMOVE."



An employee is operating a reach lift while not using his seatbelt.

Please ensure employees wear their seatbelt while operating equipment.



Employees are working on mobile scaffolding that is above 4' and are "surfing" the scaffold, which is prohibited.

Please ensure all 4 wheels are locked when employees have their scaffold platform at or above 4'.