



PROJECT INSPECTION

Generated by Safety Compliance App www.safetycompliance.com | www.safetycomplianceapp.com

Company	Helio	Type of Inspection:	SCC USE ONLY: General Contractor Review
Project	Arya	Date of Inspection	March 20, 2023
Inspector Name	Jeremy Chavez	Time of Inspection	09:49 AM





INSPECTION ITEMS

Item		Comment	Photo
Safety Manual	Satisfactory		-
Tailgate Meetings	Unsatisfactory		-
SDS	Satisfactory		-
Daily Inspection	Satisfactory	Daily inspection documentation observed was maintained according to regulatory standards.	-
Sub-Contractor Meetings	N/A		-
Labor Law Posters	Satisfactory	Labor Laws are posted	-
Codes/Emergency Posters	Satisfactory	Emergency Evacuation map, emergency numbers and driving directions, and general codes are posted.	-
Permits	Satisfactory		-
Fire Extinguisher	Satisfactory		-
Building Fire Extinguisher	Satisfactory		-
First Aid Kit	Satisfactory		-
First Aid/CPR Cert	Satisfactory		-
Restrooms/Wash Stations	Satisfactory	Restrooms and wash stations observed were maintained according to regulatory standards.	-
Waste Containers	Satisfactory	Waste containers observed were maintained according to regulatory standards.	-
Water Supply	Satisfactory		-

Shade	Satisfactory	Shade observed was maintained according to regulatory standards.	-
Power Tools	Unsatisfactory		-
Hand Tools	Satisfactory	Hand tools observed were operated according to regulatory standards.	-
Power Saws	N/A	See power tools.	-
Personal Protective Equipment	Unsatisfactory		-
Electrical Safety	Unsatisfactory		-
Trenching/Excavation	N/A		-
Confined Space	N/A		-
Fall Protection	Unsatisfactory		-
Ladder Safety	Unsatisfactory		-
Access/Egress	Satisfactory	Access and egress was observed to be compliant with regulatory standards.	-
Stairway/Ramps/Runways	Satisfactory		-
Heavy Equipment	N/A		-
Crane/Rigging	N/A		-
Powder Actuated Tools	N/A		-
Cylinder Storage	N/A		-
Floor/Roof/Wall Openings	N/A		-
Railing	Unsatisfactory		-
Material Storage	Satisfactory	Stored materials observed were compliant with regulatory standards.	-
Impalement Hazards	Satisfactory	Impairment hazards observed were protected according to regulatory standards.	-
Traffic Control	N/A		-
Scissor Lifts/Boom Lift	N/A		-
Powered Industrial Trucks	N/A		-
Scaffolding/Shoring	Satisfactory		-
Suspended Scaffolding	N/A		-
Silica Items/Dust	N/A		-
Hot Work	N/A		-
Housekeeping	Satisfactory	Housekeeping observed was maintained according to regulatory standards.	-
Roofing Operations	N/A		-

Demolition	N/A		-
------------	-----	--	---

UNSATISFACTORY ITEMS

Photo	Comment	Corrective Action
-	The project manager is in the process of collecting the documents.	
	An employee using a skill saw does not appear to have the knowledge and/or experience to operate a circular saw safely. The employee experienced several kickbacks during a single cut while his saw was wobbling. The employee did not have control of the saw due to an awkward position, unstable work platform, insufficient illumination, and overreaching. Please ensure this employee is retrained on the use of circular saws and is supervised by a competent operator.	
	An employee was not wearing safety glasses while operating a nail gun. Please ensure employees wear the required PPE	
	An employee was not wearing safety glasses while operating a circular saw. Please ensure employees wear the required PPE	
	Insufficient illumination was noted in some areas of the stairs. Please ensure sufficient lighting is provided.	



Employees have removed guardrails to move materials into an elevator shaft. This exposes them to a significant fall hazard. The employees must implement a means of fall protection, which likely will be through the use of personal fall protection.



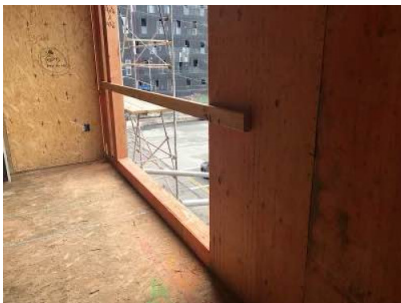
An employee has removed the guardrails that were installed in order to complete his task. This exposes the employee to a significant fall hazard. Please ensure the employee implements personal fall protection.



An employee is standing on the 2nd to top step of an A-frame ladder, which is prohibited. Please ensure employees use the approved steps, which may require the use of a taller ladder.



An employee was using an A-frame ladder in a closed position. Please ensure employees use their ladder in an open, locked and level position, which may require housekeeping prior to performing the task.



A mid rail has been removed where required. Please ensure a mid rail is installed halfway between the top rail and the working platform.



Guardrails have not been installed where required. Please ensure guardrails are installed at 42-45" top rail, with a mid rail halfway between the top rail and the working platform.