



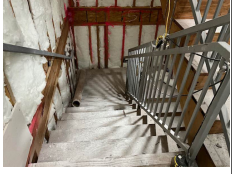

# PROJECT INSPECTION

Generated by Safety Compliance App [www.safetycompliance.com](http://www.safetycompliance.com) | [www.safetycomplianceapp.com](http://www.safetycomplianceapp.com)

|                       |               |                            |  |
|-----------------------|---------------|----------------------------|--|
| <b>Company</b>        | Helio         | <b>Type of Inspection:</b> | SCC USE ONLY: General Contractor<br>Review |
| <b>Project</b>        | Arya          | <b>Date of Inspection</b>  | August 08, 2023                            |
| <b>Inspector Name</b> | Jeremy Chavez | <b>Time of Inspection</b>  | 09:11 AM                                   |

## INSPECTION ITEMS

| Item                       |              | Comment  | Photo |
|----------------------------|--------------|--|-------|
| Safety Manual              | Satisfactory |  | -     |
| Tailgate Meetings          | N/A          |  | -     |
| SDS                        | Satisfactory |  | -     |
| Daily Inspection           | Satisfactory |  | -     |
| Sub-Contractor Meetings    | N/A          |  | -     |
| Labor Law Posters          | Satisfactory | Labor laws are posted  | -     |
| Codes/Emergency Posters    | Satisfactory | Emergency evacuation map is posted. Emergency and driving directions are posted. General codes are posted. | -     |
| Permits                    | N/A          |  | -     |
| Fire Extinguisher          | Satisfactory |  | -     |
| Building Fire Extinguisher | Satisfactory |  | -     |
| First Aid Kit              | Satisfactory |  | -     |
| First Aid/CPR Cert         | Satisfactory |  | -     |
| Restrooms/Wash Stations    | Satisfactory | Restrooms and wash stations observed were maintained according to regulatory standards.                    | -     |
| Waste Containers           | Satisfactory | Waste containers observed were maintained according to regulatory standards.                               | -     |
| Water Supply               | N/A          |  | -     |
| Shade                      | Satisfactory | Shade observed was maintained according to regulatory standards.   | -     |
| Power Tools                | Satisfactory |  | -     |

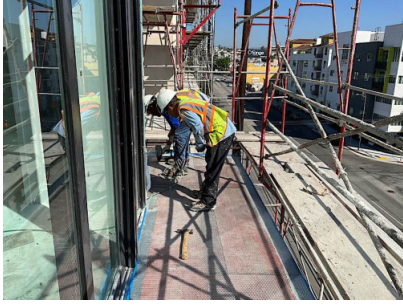
|                               |                |  |   |
|-------------------------------|----------------|--|---|
| Hand Tools                    | Satisfactory   |  | -   |
| Power Saws                    | N/A            |  | -   |
| Personal Protective Equipment | Unsatisfactory |  | -   |
| Electrical Safety             | Satisfactory   | Illumination has been provided throughout the project. Good job. |    |
| Trenching/Excavation          | N/A            |  | -   |
| Confined Space                | N/A            |  | -   |
| Fall Protection               | N/A            |  | -   |
| Ladder Safety                 | Unsatisfactory |  | -   |
| Access/Egress                 | Satisfactory   |  | -   |
| Stairway/Ramps/Runways        | Satisfactory   |  | -   |
| Heavy Equipment               | N/A            |  | -   |
| Crane/Rigging                 | N/A            |  | -   |
| Powder Actuated Tools         | N/A            |  | -   |
| Cylinder Storage              | N/A            |  | -   |
| Floor/Roof/Wall Openings      | Satisfactory   |  | -   |
| Railing                       | Unsatisfactory |  | -   |
| Material Storage              | Satisfactory   |  | -   |
| Impalement Hazards            | Unsatisfactory |  | -   |
| Traffic Control               | N/A            |  | -   |
| Scissor Lifts/Boom Lift       | N/A            |  | -   |
| Powered Industrial Trucks     | N/A            |  | -   |
| Scaffolding/Shoring           | Unsatisfactory |  | -   |
| Suspended Scaffolding         | N/A            |  | -   |
| Silica Items/Dust             | N/A            |  | -   |
| Hot Work                      | N/A            |  | -   |
| Housekeeping                  | Satisfactory   | Housekeeping throughout the project is being maintained.         |  |
| Roofing Operations            | N/A            |  | -   |
| Demolition                    | N/A            |  | -   |

## UNSATISFACTORY ITEMS

Photo

Comment

Corrective Action



An employee is not wearing safety glasses while operating a nail gun. The employee complied to don his safety glasses.



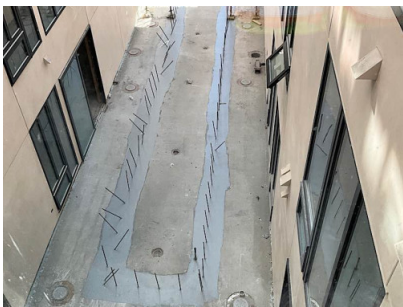
An employee is using an A-Frame ladder in a closed position. The employee complied to turn the ladder and use it in an open, locked, and level position.



A shaft that presents a very significant fall hazard has been left unattended and unprotected. Please ensure railing is installed.



Due to the low height of the scaffold, a means of fall protection must be provided, such as guardrails.



Rebar has not been capped, covered, or bent down. Please ensure impalement protection is provided.



An employee was observed climbing from the balcony onto the scaffold, which due to the distance is not permitted. Additionally, end rails are missing in a section of scaffolding.