




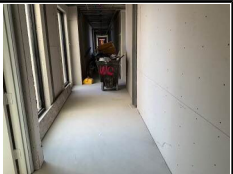
PROJECT INSPECTION

Generated by Safety Compliance App www.safetycompliance.com | www.safetycomplianceapp.com

| | | | |
|-----------------------|---------------|----------------------------|--|
| Company | Helio | Type of Inspection: | SCC USE ONLY: General Contractor Review |
| Project | Arya | Date of Inspection | September 18, 2023 |
| Inspector Name | Jeremy Chavez | Time of Inspection | 02:39 PM |

INSPECTION ITEMS

| Item | | Comment | Photo |
|----------------------------|----------------|---|-------|
| Safety Manual | Satisfactory | | - |
| Tailgate Meetings | N/A | | - |
| SDS | Satisfactory | | - |
| Daily Inspection | Satisfactory | | - |
| Sub-Contractor Meetings | N/A | | - |
| Labor Law Posters | Satisfactory | Labor laws are posted | - |
| Codes/Emergency Posters | Satisfactory | Emergency evacuation map is posted Emergency numbers and driving directions are posted General codes are posted | - |
| Permits | N/A | | - |
| Fire Extinguisher | Satisfactory | | - |
| Building Fire Extinguisher | Satisfactory | | - |
| First Aid Kit | Satisfactory | | - |
| First Aid/CPR Cert | Satisfactory | | - |
| Restrooms/Wash Stations | Satisfactory | Restrooms and wash stations observed were maintained according to regulatory standards. | - |
| Waste Containers | Satisfactory | Waste containers observed were maintained according to regulatory standards. | - |
| Water Supply | N/A | | - |
| Shade | Satisfactory | Shade observed was maintained according to regulatory standards. | - |
| Power Tools | Unsatisfactory | | - |

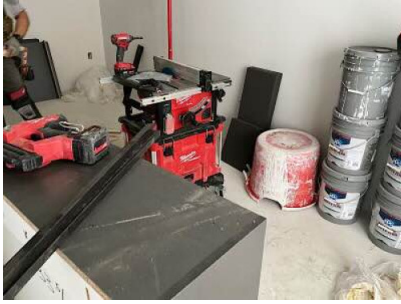
| | | | |
|-------------------------------|----------------|---|---|
| Hand Tools | Satisfactory | | - |
| Power Saws | N/A | | - |
| Personal Protective Equipment | Satisfactory | | - |
| Electrical Safety | Unsatisfactory | | - |
| Trenching/Excavation | N/A | | - |
| Confined Space | N/A | | - |
| Fall Protection | N/A | | - |
| Ladder Safety | Unsatisfactory | | - |
| Access/Egress | Satisfactory | | - |
| Stairway/Ramps/Runways | Satisfactory | | - |
| Heavy Equipment | N/A | | - |
| Crane/Rigging | N/A | | - |
| Powder Actuated Tools | Unsatisfactory | | - |
| Cylinder Storage | N/A | | - |
| Floor/Roof/Wall Openings | Satisfactory | | - |
| Railing | Unsatisfactory | | - |
| Material Storage | Satisfactory | Good job securing drywall to prevent slipping, tipping, or falling. |  |
| Impalement Hazards | Satisfactory | | - |
| Traffic Control | N/A | | - |
| Scissor Lifts/Boom Lift | N/A | | - |
| Powered Industrial Trucks | Unsatisfactory | | - |
| Scaffolding/Shoring | N/A | | - |
| Suspended Scaffolding | N/A | | - |
| Silica Items/Dust | N/A | | - |
| Hot Work | N/A | | - |
| Housekeeping | Satisfactory | Overall, housekeeping looks good throughout the project |  |
| Roofing Operations | N/A | | - |
| Demolition | N/A | | - |

UNSATISFACTORY ITEMS

Photo

Comment

Corrective Action



A table saw does not have its guard equipped. Please ensure tools have the manufacturers safety elements present and unaltered.



Insufficient illumination is in a stairway. Please ensure lighting is provided.



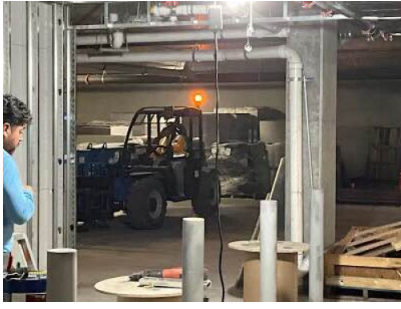
An employee is using an A-frame ladder in a closed position. Please ensure employees use ladders in an open, locked, and level position.



A powder actuated tool has been left unattended and is not secured in a locked container. Please ensure cartridges are uploaded and the tool is kept in a locked container when not in use.



A missing guardrail exposed a fall hazard on the 3rd floor. Please ensure railing is installed.



An employee is operating a rough terrain forklift while not wearing his seatbelt. Please ensure employees wear their seatbelt when required.