

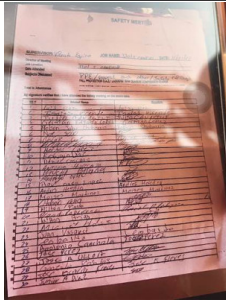
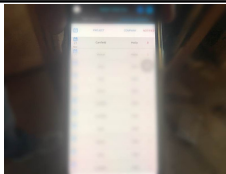


# PROJECT INSPECTION

Generated by Safety Compliance App [www.safetycompliance.com](http://www.safetycompliance.com) | [www.safetycomplianceapp.com](http://www.safetycomplianceapp.com)

<b>Company</b>	Helio	<b>Type of Inspection:</b>	SCC USE ONLY: General Contractor Review
<b>Project</b>	Canfield	<b>Date of Inspection</b>	November 21, 2022
<b>Inspector Name</b>	Jeremy Chavez	<b>Time of Inspection</b>	11:50 AM

## INSPECTION ITEMS

Item		Comment	Photo
Safety Manual	Satisfactory		-
Tailgate Meetings	Satisfactory	Tailgate meetings are being submitted by sub contractors.	
SDS	Satisfactory		-
Daily Inspection	Satisfactory	The superintendent is performing and documenting daily jobsite inspections.	
Sub-Contractor Meetings	N/A		-
Labor Law Posters	Satisfactory		-
Codes/Emergency Posters	Satisfactory		-
Permits	Satisfactory		-
Fire Extinguisher	Satisfactory		-
Building Fire Extinguisher	Satisfactory		-
First Aid Kit	Satisfactory		-
First Aid/CPR Cert	Satisfactory		-
Restrooms/Wash Stations	Satisfactory		-
Waste Containers	Satisfactory		-
Water Supply	Satisfactory		-

Shade	Satisfactory		-
Power Tools	Satisfactory		-
Hand Tools	Satisfactory		-
Power Saws	Satisfactory		-
Personal Protective Equipment	Satisfactory		-
Electrical Safety	Satisfactory		-
Trenching/Excavation	N/A		-
Confined Space	N/A		-
Fall Protection	Satisfactory		-
Ladder Safety	Satisfactory		-
Access/Egress	Unsatisfactory		-
Stairway/Ramps/Runways	Satisfactory		-
Heavy Equipment	N/A		-
Crane/Rigging	N/A		-
Powder Actuated Tools	N/A		-
Cylinder Storage	N/A		-
Floor/Roof/Wall Openings	Satisfactory		-
Railing	Satisfactory		-
Material Storage	Satisfactory		-
Impalement Hazards	Satisfactory		-
Traffic Control	N/A		-
Scissor Lifts/Boom Lift	N/A		-
Powered Industrial Trucks	Satisfactory		-
Scaffolding/Shoring	N/A		-
Suspended Scaffolding	N/A		-
Silica Items/Dust	N/A		-
Hot Work	N/A		-
Housekeeping	Satisfactory		-
Roofing Operations	N/A		-
Demolition	N/A		-

## UNSATISFACTORY ITEMS

Photo

Comment

Corrective Action



An employee is working above his trigger height without the use of personal fall protection while he installs guardrails.

Employees must use personal fall when working above their trigger height, even if the duration is relatively brief, such as when installing guardrails



Employee is standing on the 2nd to top step of an A-Frame ladder while he is next to a wall opening.

Please ensure employees use the approved steps. When working next to wall openings, additional protection may be required, such as guardrails.



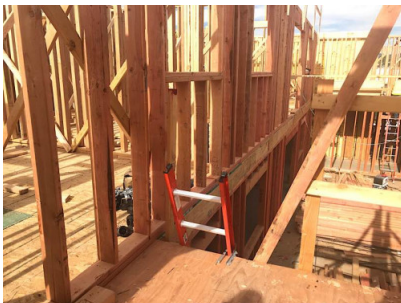
Employee is standing on the 2nd to top step of an A-Frame ladder, which is prohibited.

Please ensure employees use the approved steps.



Employee was observed standing on the 2nd to top step of an A-Frame ladder, which is prohibited.

Please ensure employees use the approved steps.



Ladders are being used to gain access to the top floor. Also, the ladder does not extend the minimum 36" above the platform being accessed.

Please ensure stairs are completed to the top floor. Also, access ladders must reach 36" above the platform being accessed.



There were a few areas where guardrails were missing.

Please ensure guardrails are installed where required.



An employee is operating a reach lift while not wearing his seatbelt.

Please ensure employees wear their seatbelt while operating equipment.