

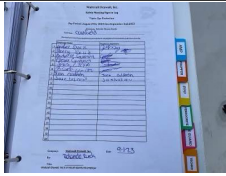
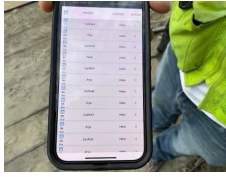


PROJECT INSPECTION

Generated by Safety Compliance App www.safetycompliance.com | www.safetycomplianceapp.com

Company	Helio	Type of Inspection:	SCC USE ONLY: General Contractor Review
Project	Canfield	Date of Inspection	September 11, 2023
Inspector Name	Jeremy Chavez	Time of Inspection	12:08 PM

INSPECTION ITEMS

Item		Comment	Photo
Safety Manual	Satisfactory		-
Tailgate Meetings	Satisfactory	Good job performing and documenting most recent tailgate meetings	
SDS	Satisfactory		-
Daily Inspection	Satisfactory	Daily job site inspections are performed.	
Sub-Contractor Meetings	N/A		-
Labor Law Posters	Satisfactory	Labor laws are posted	-
Codes/Emergency Posters	Satisfactory	Emergency evacuation map is posted Emergency numbers and driving directions are posted General codes are posted	-
Permits	N/A		-
Fire Extinguisher	Satisfactory		-
Building Fire Extinguisher	Satisfactory		-
First Aid Kit	Satisfactory		-
First Aid/CPR Cert	Satisfactory		-
Restrooms/Wash Stations	Satisfactory	Restrooms and wash stations observed were maintained according to regulatory standards	-
Waste Containers	Satisfactory	Waste containers observed were maintained according to regulatory standards.	-

Water Supply	N/A		-
Shade	Satisfactory	Shade observed was maintained according to regulatory standards	-
Power Tools	Unsatisfactory		-
Hand Tools	Satisfactory		-
Power Saws	N/A		-
Personal Protective Equipment	Unsatisfactory		-
Electrical Safety	Unsatisfactory		-
Trenching/Excavation	N/A		-
Confined Space	N/A		-
Fall Protection	N/A		-
Ladder Safety	Satisfactory		-
Access/Egress	Satisfactory		-
Stairway/Ramps/Runways	Satisfactory		-
Heavy Equipment	N/A		-
Crane/Rigging	N/A		-
Powder Actuated Tools	N/A		-
Cylinder Storage	N/A		-
Floor/Roof/Wall Openings	Satisfactory		-
Railing	Unsatisfactory		-
Material Storage	Satisfactory		-
Impalement Hazards	Satisfactory		-
Traffic Control	N/A		-
Scissor Lifts/Boom Lift	N/A		-
Powered Industrial Trucks	N/A		-
Scaffolding/Shoring	Unsatisfactory		-
Suspended Scaffolding	N/A		-
Silica Items/Dust	Satisfactory		-
Hot Work	N/A		-
Housekeeping	Unsatisfactory		-
Roofing Operations	N/A		-
Demolition	N/A		-

UNSATISFACTORY ITEMS

Photo

Comment

Corrective Action



A table saw is not equipped with its guard. Please ensure tools have the manufacturers safety elements present and unaltered.



Several employees were not wearing the required PPE, which includes a hard hat and hi-vis vest or shirt. Please ensure employees wear the required PPE.



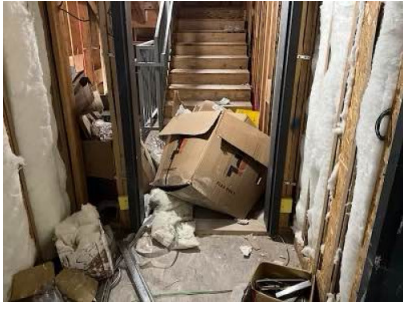
An area where employees are working is lacking the required illumination. Please provide lighting in work areas.



A guardrail appears to have been lowered and not reinstalled at the required height. Please ensure the top rail is installed, led at 42-45" height.



An employee is using stilts, which are prohibited. Please ensure employees use approved means of gaining elevation.



Housekeeping needs to give attention to debris and materials in walkways.