





PROJECT INSPECTION

Generated by Safety Compliance App www.safetycompliance.com | www.safetycomplianceapp.com

Company	Helio	Type of Inspection:	SCC USE ONLY: General Contractor Review
Project	Canfield	Date of Inspection	September 18, 2023
Inspector Name	Jeremy Chavez	Time of Inspection	02:51 PM

INSPECTION ITEMS

Item		Comment	Photo
Safety Manual	Satisfactory		-
Tailgate Meetings	N/A		-
SDS	Satisfactory		-
Daily Inspection	Satisfactory	Daily job site inspections are performed.	
Sub-Contractor Meetings	N/A		-
Labor Law Posters	Satisfactory	Labor laws are posted	-
Codes/Emergency Posters	Satisfactory	Emergency evacuation map is posted Emergency numbers and driving directions are posted General codes are posted	-
Permits	N/A		-
Fire Extinguisher	Satisfactory		-
Building Fire Extinguisher	Satisfactory		-
First Aid Kit	Satisfactory		-
First Aid/CPR Cert	Satisfactory		-
Restrooms/Wash Stations	Satisfactory	Restrooms and wash stations observed were maintained according to regulatory standards	-
Waste Containers	Satisfactory		-
Water Supply	N/A		-
Shade	Satisfactory		-
Power Tools	Satisfactory		-

Hand Tools	Satisfactory		-
Power Saws	N/A		-
Personal Protective Equipment	Unsatisfactory		-
Electrical Safety	Unsatisfactory		-
Trenching/Excavation	N/A		-
Confined Space	N/A		-
Fall Protection	Unsatisfactory		-
Ladder Safety	Satisfactory	Safe work practices were observed while employees were using ladders.	
Access/Egress	Satisfactory		-
Stairway/Ramps/Runways	Satisfactory		-
Heavy Equipment	N/A		-
Crane/Rigging	N/A		-
Powder Actuated Tools	N/A		-
Cylinder Storage	N/A		-
Floor/Roof/Wall Openings	Satisfactory		-
Railing	Satisfactory		-
Material Storage	Satisfactory		-
Impalement Hazards	Satisfactory		-
Traffic Control	N/A		-
Scissor Lifts/Boom Lift	N/A		-
Powered Industrial Trucks	N/A		-
Scaffolding/Shoring	Unsatisfactory		-
Suspended Scaffolding	N/A		-
Silica Items/Dust	N/A		-
Hot Work	N/A		-
Housekeeping	Satisfactory		-
Roofing Operations	N/A		-
Demolition	N/A		-

UNSATISFACTORY ITEMS

Photo

Comment

Corrective Action



An employee is not wearing the required PPE, which includes safety glasses. Please ensure employees wear the required PPE.



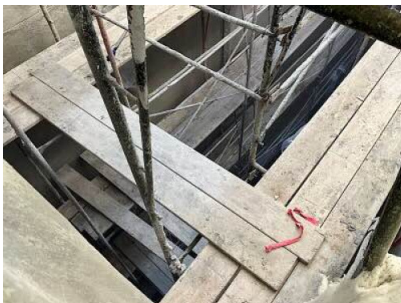
A section of stairs does not have sufficient illumination. Please ensure lighting is provided.



A floor opening has been left unprotected. Discussed fall protection methods with the superintendent, which include installing guardrails and using personal fall protection.



Another section of scaffolding is missing the required planks. Corrective action was taken and the required planks were installed.



A couple of scaffold planks are missing where required. The scaffold must be fully planked, which would require a width of 3 planks for the pictured sections.