



PROJECT INSPECTION

Generated by Safety Compliance App www.safetycompliance.com | www.safetycomplianceapp.com


Company	Helio	Type of Inspection:	SCC USE ONLY: General Contractor Review
Project	Venue	Date of Inspection	January 25, 2022
Inspector Name	Jeremy Chavez	Time of Inspection	09:25 AM

INSPECTION ITEMS

Item		Comment	Photo
Safety Manual	Satisfactory		-
Tailgate Meetings	Satisfactory		-
SDS	Satisfactory		-
Daily Inspection	Satisfactory		-
Sub-Contractor Meetings	Satisfactory		-
Labor Law Posters	Satisfactory		-
Codes/Emergency Posters	Satisfactory		-
Permits	Satisfactory		-
Fire Extinguisher	Satisfactory		-
Building Fire Extinguisher	Satisfactory		-
First Aid Kit	Satisfactory		-
First Aid/CPR Cert	Satisfactory		-
Restrooms/Wash Stations	Unsatisfactory		-
Waste Containers	Satisfactory		-
Water Supply	Satisfactory		-
Shade	Satisfactory		-
Power Tools	Satisfactory		-
Hand Tools	Satisfactory		-
Power Saws	Satisfactory		-
Personal Protective Equipment	Satisfactory		-
Electrical Safety	Satisfactory		-
Trenching/Excavation	N/A		-

Confined Space	N/A		-
Fall Protection	N/A		-
Ladder Safety	Unsatisfactory		-
Access/Egress	Unsatisfactory		-
Stairway/Ramps/Runways	Unsatisfactory	See access comments.	-
Heavy Equipment	N/A		-
Crane/Rigging	N/A		-
Powder Actuated Tools	N/A		-
Cylinder Storage	N/A		-
Floor/Roof/Wall Openings	Unsatisfactory		-
Railing	Satisfactory		-
Material Storage	Satisfactory		-
Impalement Hazards	Satisfactory		-
Traffic Control	N/A		-
Scissor Lifts/Boom Lift	N/A		-
Powered Industrial Trucks	N/A		-
Scaffolding/Shoring	Satisfactory		-
Suspended Scaffolding	N/A		-
Silica Items/Dust	N/A		-
Hot Work	N/A		-
Housekeeping	Satisfactory		-
Roofing Operations	N/A		-
Demolition	N/A		-

UNSATISFACTORY ITEMS

Photo	Comment	Corrective Action
	<p>Wash station is out of water and disposable towels.</p>	<p>Restrooms are scheduled to be serviced today.</p>



Employee is straddling an A-Frame ladder.

Employee complied to use the approved steps.



Employee is standing on the 2nd to top step of an A-Frame ladder.

Please ensure only the approved steps are used.



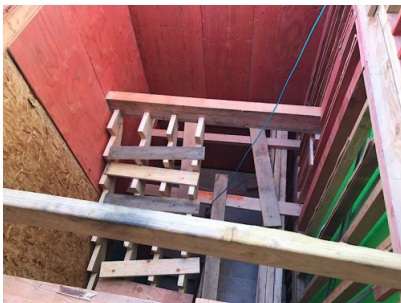
Employee is using an A-Frame ladder in a partially closed position.

Ladders must open, locked, and level.



Employee is standing on the top step of an A-Frame ladder.

Please ensure employees use the approved steps.



Stairs are in the process of being installed to the top floor.

See above.



Opening is not fully covered, which creates a fall hazard.

Openings must be fully covered, secured, and marked "OPENING DO NOT REMOVE".