

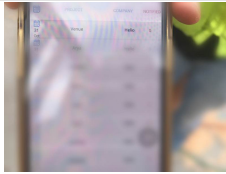



# PROJECT INSPECTION

Generated by Safety Compliance App [www.safetycompliance.com](http://www.safetycompliance.com) | [www.safetycomplianceapp.com](http://www.safetycomplianceapp.com)

<b>Company</b>	Helio	<b>Type of Inspection:</b>	SCC USE ONLY: General Contractor Review
<b>Project</b>	Venue	<b>Date of Inspection</b>	November 01, 2022
<b>Inspector Name</b>	Jeremy Chavez	<b>Time of Inspection</b>	08:15 AM

## INSPECTION ITEMS

Item		Comment	Photo
Safety Manual	Satisfactory		-
Tailgate Meetings	N/A	The superintendent is working on confirming that all sub contractors have completed their tailgate meeting.	-
SDS	Satisfactory		-
Daily Inspection	Satisfactory		
Sub-Contractor Meetings	N/A		-
Labor Law Posters	Satisfactory		-
Codes/Emergency Posters	Satisfactory		-
Permits	Satisfactory		-
Fire Extinguisher	Satisfactory		-
Building Fire Extinguisher	Satisfactory		-
First Aid Kit	Satisfactory		-
First Aid/CPR Cert	Satisfactory		-
Restrooms/Wash Stations	Satisfactory		-
Waste Containers	Satisfactory		-
Water Supply	Satisfactory		-
Shade	Satisfactory		-
Power Tools	Satisfactory		-
Hand Tools	Satisfactory		-

Power Saws	Satisfactory		-
Personal Protective Equipment	Satisfactory		-
Electrical Safety	Satisfactory		-
Trenching/Excavation	N/A		-
Confined Space	N/A		-
Fall Protection	N/A		-
Ladder Safety	Satisfactory		-
Access/Egress	Satisfactory		-
Stairway/Ramps/Runways	Satisfactory		-
Heavy Equipment	N/A		-
Crane/Rigging	N/A		-
Powder Actuated Tools	N/A		-
Cylinder Storage	N/A		-
Floor/Roof/Wall Openings	Satisfactory		-
Railing	Satisfactory		-
Material Storage	Satisfactory		-
Impalement Hazards	N/A		-
Traffic Control	N/A		-
Scissor Lifts/Boom Lift	N/A		-
Powered Industrial Trucks	N/A		-
Scaffolding/Shoring	Satisfactory		-
Suspended Scaffolding	N/A		-
Silica Items/Dust	Satisfactory		-
Hot Work	N/A		-
Housekeeping	Unsatisfactory		
Roofing Operations	N/A		-
Demolition	N/A		-

## UNSATISFACTORY ITEMS

Photo

Comment

Corrective Action



An employee is using a pneumatic staple gun while not wearing his safety glasses.

The employee complied to bring his safety glasses.



An employee is standing on the 2nd to top step of an A-Frame ladder, which is prohibited.

The employee complied to use only the approved steps. A taller ladder was recommended if needed.



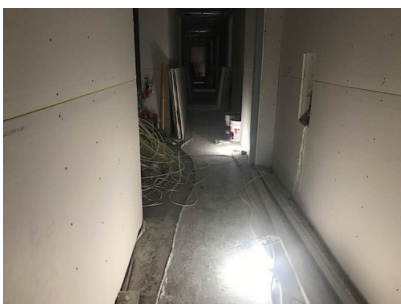
An employee is using single planks that are resting on ladder steps, which is prohibited.

The employee complied to remove the planks and use a ladder to gain elevation.



Employees are creating a dust cloud by dry sweeping products potentially containing silica.

The employees will apply water to control the dust. Please ensure employees are trained in silica. If a respirator is needed, respirator training will also be needed.



Overall housekeeping is acceptable, however debris, materials, and string lights are creating tripping hazards.

Discussed giving attention to tripping hazards. The superintendent will contact the responsible sub contractors to ensure housekeeping is given priority.