




PROJECT INSPECTION

Generated by Safety Compliance App www.safetycompliance.com | www.safetycomplianceapp.com

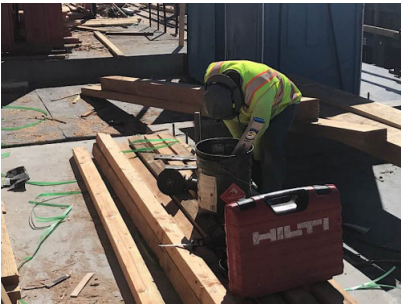
Company	Helio	Type of Inspection:	SCC USE ONLY: General Contractor Review
Project	Venue	Date of Inspection	November 22, 2021
Inspector Name	Jeremy Chavez	Time of Inspection	11:15 AM

INSPECTION ITEMS

Item		Comment	Photo
Safety Manual	Satisfactory		-
Tailgate Meetings	Satisfactory		-
SDS	Satisfactory		-
Daily Inspection	Satisfactory		-
Sub-Contractor Meetings	Satisfactory		-
Labor Law Posters	Satisfactory		-
Codes/Emergency Posters	Satisfactory		-
Permits	Satisfactory		-
Fire Extinguisher	Satisfactory		-
Building Fire Extinguisher	Satisfactory		-
First Aid Kit	Satisfactory		-
First Aid/CPR Cert	Satisfactory		-
Restrooms/Wash Stations	Satisfactory		-
Waste Containers	Satisfactory		-
Water Supply	Satisfactory		-
Shade	Satisfactory		-
Power Tools	Unsatisfactory		-
Hand Tools	Satisfactory		-
Power Saws	Satisfactory		-
Personal Protective Equipment	Unsatisfactory		-
Electrical Safety	Satisfactory		-
Trenching/Excavation	N/A		-

Confined Space	N/A		-
Fall Protection	N/A		-
Ladder Safety	Satisfactory	Good job setting up access ladders.	
Access/Egress	Satisfactory		-
Stairway/Ramps/Runways	Satisfactory		-
Heavy Equipment	N/A		-
Crane/Rigging	N/A		-
Powder Actuated Tools	N/A		-
Cylinder Storage	Satisfactory		-
Floor/Roof/Wall Openings	Satisfactory		-
Railing	Satisfactory		-
Material Storage	Satisfactory		-
Impalement Hazards	Satisfactory		-
Traffic Control	Satisfactory		-
Scissor Lifts/Boom Lift	N/A		-
Powered Industrial Trucks	N/A		-
Scaffolding/Shoring	Satisfactory		-
Suspended Scaffolding	N/A		-
Silica Items/Dust	Satisfactory		-
Hot Work	N/A		-
Housekeeping	Satisfactory		-
Roofing Operations	N/A		-
Demolition	N/A		-

UNSATISFACTORY ITEMS

Photo	Comment	Corrective Action
	Grinder is missing its guard.	Please ensure tools have the manufacturer's guard present.



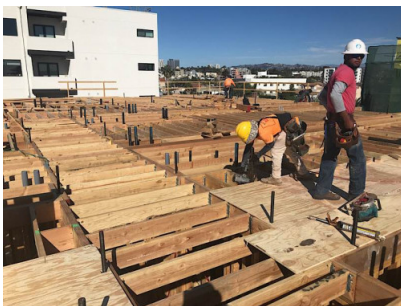
Employee is not wearing his safety glasses while using a nail gun.

Employee must wear ANSI rated safety glasses.



Employee is not wearing safety glasses while using a nail gun.

Employee must wear ANSI rated safety glasses.



Employee is wearing head gear between his hard hat and his head. The employee reported his hard hat frequently comes off.

Only head gear approved by the manufacturer is permitted between the head and hard hat.