





PROJECT INSPECTION

Generated by Safety Compliance App www.safetycompliance.com | www.safetycomplianceapp.com

Company	Helio	Type of Inspection:	SCC USE ONLY: General Contractor Review
Project	Venue	Date of Inspection	December 20, 2021
Inspector Name	Jeremy Chavez	Time of Inspection	12:08 PM

INSPECTION ITEMS

Item		Comment	Photo
Safety Manual	Satisfactory		-
Tailgate Meetings	Satisfactory		-
SDS	Satisfactory		-
Daily Inspection	Satisfactory		-
Sub-Contractor Meetings	Satisfactory		-
Labor Law Posters	Satisfactory		-
Codes/Emergency Posters	Satisfactory		-
Permits	Satisfactory		-
Fire Extinguisher	Satisfactory		-
Building Fire Extinguisher	Satisfactory		-
First Aid Kit	Satisfactory		-
First Aid/CPR Cert	Satisfactory		-
Restrooms/Wash Stations	Satisfactory		-
Waste Containers	Satisfactory		-
Water Supply	Satisfactory		-
Shade	Satisfactory		-
Power Tools	Unsatisfactory		-
Hand Tools	Satisfactory		-
Power Saws	Satisfactory		-
Personal Protective Equipment	Satisfactory		-
Electrical Safety	Satisfactory		-
Trenching/Excavation	N/A		-

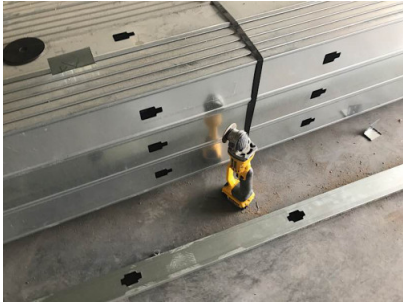
Confined Space	N/A		-
Fall Protection	Unsatisfactory		-
Ladder Safety	Unsatisfactory		-
Access/Egress	Satisfactory	The man lift is operational to the top floor. Good job.	
Stairway/Ramps/Runways	Satisfactory		-
Heavy Equipment	N/A		-
Crane/Rigging	N/A		-
Powder Actuated Tools	Unsatisfactory		-
Cylinder Storage	Satisfactory		-
Floor/Roof/Wall Openings	Satisfactory		-
Railing	Satisfactory	Discussed with the superintendent providing guardrails where unprotected edges are. This was also discussed with the framing contractor.	
Material Storage	Satisfactory		-
Impalement Hazards	Satisfactory		-
Traffic Control	N/A		-
Scissor Lifts/Boom Lift	N/A		-
Powered Industrial Trucks	N/A		-
Scaffolding/Shoring	Satisfactory		-
Suspended Scaffolding	N/A		-
Silica Items/Dust	Satisfactory		-
Hot Work	Satisfactory		-
Housekeeping	Satisfactory		-
Roofing Operations	N/A		-
Demolition	N/A		-

UNSATISFACTORY ITEMS

Photo

Comment

Corrective Action



Grinder has its guard removed.

Please ensure tools have the manufacturer's guard present.



Grinder has its guard removed.

Please ensure tools have the manufacturer's guard present.



The beam strap is tied around a tie rod.

Discussed with the employee the correct method of installing a beam strap. As a general reminder, please ensure employees have been trained in Fall Protection.



This access ladder creates an opening.

Please ensure a corral is installed.



Employee is using a PAT and does not have his certification card on him. Additionally, warning signs must be posted.

Please ensure employees using PAT's have a current certification and signage is posted.