





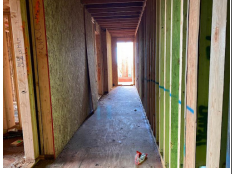
PROJECT INSPECTION

Generated by Safety Compliance App www.safetycompliance.com | www.safetycomplianceapp.com

Company	Helio	Type of Inspection:	SCC USE ONLY: General Contractor Review
Project	Venue	Date of Inspection	December 28, 2021
Inspector Name	Jeremy Chavez	Time of Inspection	11:08 AM

INSPECTION ITEMS

Item		Comment	Photo
Safety Manual	Satisfactory		-
Tailgate Meetings	Satisfactory		-
SDS	Satisfactory		-
Daily Inspection	Satisfactory		-
Sub-Contractor Meetings	Satisfactory		-
Labor Law Posters	Satisfactory		-
Codes/Emergency Posters	Satisfactory		-
Permits	Satisfactory		-
Fire Extinguisher	Satisfactory		-
Building Fire Extinguisher	Satisfactory		-
First Aid Kit	Satisfactory		-
First Aid/CPR Cert	Satisfactory		-
Restrooms/Wash Stations	Satisfactory		-
Waste Containers	Satisfactory		-
Water Supply	Satisfactory		-
Shade	Satisfactory		-
Power Tools	Satisfactory		-
Hand Tools	Satisfactory		-
Power Saws	Satisfactory		-
Personal Protective Equipment	Unsatisfactory		-
Electrical Safety	Satisfactory		-
Trenching/Excavation	N/A		-

Confined Space	N/A		-
Fall Protection	N/A		-
Ladder Safety	Unsatisfactory		-
Access/Egress	Satisfactory		-
Stairway/Ramps/Runways	Satisfactory		-
Heavy Equipment	N/A		-
Crane/Rigging	N/A		-
Powder Actuated Tools	Unsatisfactory	Good job posting the required PAT signage.	
Cylinder Storage	Satisfactory		-
Floor/Roof/Wall Openings	Satisfactory		-
Railing	Satisfactory	Excellent job with railing throughout the project.	
Material Storage	Satisfactory		-
Impalement Hazards	Satisfactory		-
Traffic Control	N/A		-
Scissor Lifts/Boom Lift	N/A		-
Powered Industrial Trucks	Satisfactory		-
Scaffolding/Shoring	Satisfactory		-
Suspended Scaffolding	N/A		-
Silica Items/Dust	N/A		-
Hot Work	N/A		-
Housekeeping	Satisfactory	Housekeeping is well maintained.	
Roofing Operations	N/A		-
Demolition	N/A		-

UNSATISFACTORY ITEMS

Photo

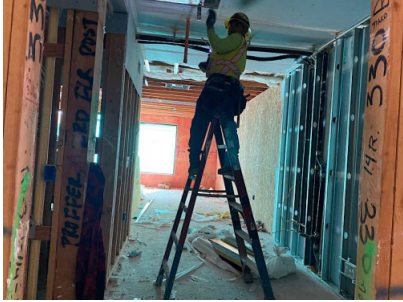
Comment

Corrective Action



Employee is using a chop saw while not wearing a face shield or safety glasses.

Employee donned the required PPE.



Employee is straddling a ladder.

Employee complied to use the approved steps.



Employee is using a ladder in a closed position.

Employee complied to use the ladder in an open, locked, and level position.



This access ladder creates an opening.

Please ensure a corral is installed.



Employee cannot provide proof of certification while using a PAT.

Only certified employees will be using the PAT.