




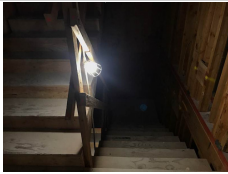

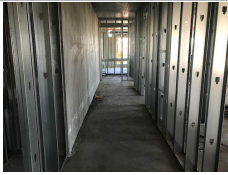
# PROJECT INSPECTION

Generated by Safety Compliance App [www.safetycompliance.com](http://www.safetycompliance.com) | [www.safetycomplianceapp.com](http://www.safetycomplianceapp.com)

|                       |               |                            |  |
|-----------------------|---------------|----------------------------|--|
| <b>Company</b>        | Helio         | <b>Type of Inspection:</b> | SCC USE ONLY: General Contractor<br>Review |
| <b>Project</b>        | Venue         | <b>Date of Inspection</b>  | February 07, 2022                          |
| <b>Inspector Name</b> | Jeremy Chavez | <b>Time of Inspection</b>  | 11:00 AM                                   |

## INSPECTION ITEMS

| Item                          |                | Comment                                 | Photo   |
|-------------------------------|----------------|---|---|
| Safety Manual                 | Satisfactory   |   | -   |
| Tailgate Meetings             | Satisfactory   |   | -   |
| SDS                           | Satisfactory   |   | -   |
| Daily Inspection              | Satisfactory   |   | -   |
| Sub-Contractor Meetings       | Satisfactory   |   | -   |
| Labor Law Posters             | Satisfactory   |   | -   |
| Codes/Emergency Posters       | Satisfactory   |   | -   |
| Permits                       | Satisfactory   |   | -   |
| Fire Extinguisher             | Satisfactory   |   | -   |
| Building Fire Extinguisher    | Satisfactory   |   | -   |
| First Aid Kit                 | Satisfactory   |   | -   |
| First Aid/CPR Cert            | Satisfactory   |   | -   |
| Restrooms/Wash Stations       | Satisfactory   |   | -   |
| Waste Containers              | Satisfactory   |   | -   |
| Water Supply                  | Satisfactory   |   | -   |
| Shade                         | Satisfactory   |   | -   |
| Power Tools                   | Satisfactory   | Good job using sawhorses when possible. |  |
| Hand Tools                    | Satisfactory   |   | -   |
| Power Saws                    | Unsatisfactory |   | -   |
| Personal Protective Equipment | Unsatisfactory |   | -   |

|                           |                |  |   |
|---------------------------|----------------|--|---|
| Electrical Safety         | Satisfactory   |  | -   |
| Trenching/Excavation      | N/A            |  | -   |
| Confined Space            | N/A            |  | -   |
| Fall Protection           | Unsatisfactory |  | -   |
| Ladder Safety             | Unsatisfactory |  | -   |
| Access/Egress             | Satisfactory   |  | -   |
| Stairway/Ramps/Runways    | Satisfactory   | Sufficient illumination has been provided throughout the project and especially in stairwells. Excellent job.  |    |
| Heavy Equipment           | N/A            |  | -   |
| Crane/Rigging             | N/A            |  | -   |
| Powder Actuated Tools     | N/A            |  | -   |
| Cylinder Storage          | Satisfactory   |  | -   |
| Floor/Roof/Wall Openings  | Satisfactory   |  | -   |
| Railing                   | Satisfactory   | Railing was installed where required. Good job.  |   |
| Material Storage          | Satisfactory   |  | -   |
| Impalement Hazards        | Satisfactory   |  | -   |
| Traffic Control           | Satisfactory   |  | -   |
| Scissor Lifts/Boom Lift   | N/A            |  | -   |
| Powered Industrial Trucks | Satisfactory   |  | -   |
| Scaffolding/Shoring       | Satisfactory   |  | -   |
| Suspended Scaffolding     | N/A            |  | -   |
| Silica Items/Dust         | N/A            |  | -   |
| Hot Work                  | Satisfactory   |  | -   |
| Housekeeping              | Satisfactory   | Housekeeping is well maintained throughout the jobsite. Debris is collected into piles before being discarded. |  |
| Roofing Operations        | N/A            |  | -   |
| Demolition                | N/A            |  | -   |

## UNSATISFACTORY ITEMS

Photo

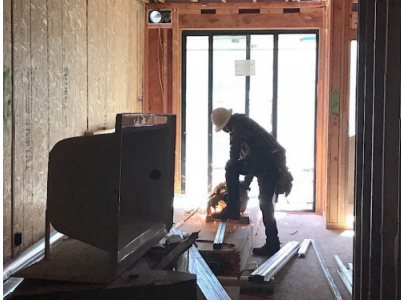
Comment

Corrective Action



The guard of this skill saw was removed due to damage after it was dropped.

It was observed in use, however, once the missing guard was identified it was removed from the project.



Employee is operating a chop saw while not wearing safety glasses or a face shield. In an effort to provide some protection the employee is facing away from the saw, which presents additional hazards as he is not watching where he cuts.

The employee went to obtain the required safety glasses and face shield.



Employee is working at an unprotected edge while not using personal fall protection. This exposes him to a significant fall hazard.

Employee got down and went to obtain a harness, lanyard, and anchor point.



Employee is working on a ladder while adjacent to an edge. The employee is above the protection provided by the guardrails installed, which exposes him to a significant fall hazard.

Employee moved the ladder to an area that eliminated the fall exposure.