



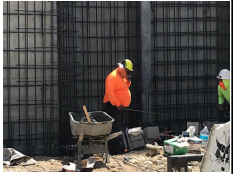

# PROJECT INSPECTION


Generated by Safety Compliance App [www.safetycompliance.com](http://www.safetycompliance.com) | [www.safetycomplianceapp.com](http://www.safetycomplianceapp.com)

<b>Company</b>	Helio	<b>Type of Inspection:</b>	SCC USE ONLY: General Contractor Review
<b>Project</b>	Venue	<b>Date of Inspection</b>	March 30, 2021
<b>Inspector Name</b>	Jeremy Chavez	<b>Time of Inspection</b>	12:30 PM




## INSPECTION ITEMS

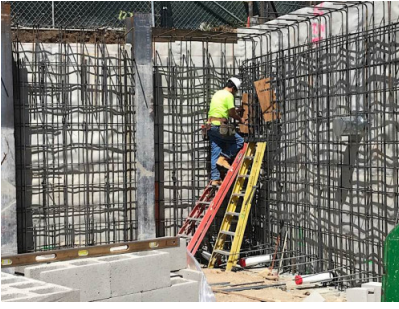
Item		Comment	Photo
Safety Manual	Satisfactory		-
Tailgate Meetings	Satisfactory	Good job performing and documenting tailgate meetings.	
SDS	Satisfactory		-
Daily Inspection	Satisfactory	Daily jobsite inspections continue to be completed.	

Sub-Contractor Meetings	Unsatisfactory		
Labor Law Posters	Satisfactory		-
Codes/Emergency Posters	Satisfactory		-
Permits	Satisfactory		-
Fire Extinguisher	Satisfactory		-
Building Fire Extinguisher	N/A		-
First Aid Kit	Satisfactory		-
First Aid/CPR Cert	Satisfactory		-
Restrooms/Wash Stations	Satisfactory		-
Waste Containers	Satisfactory		-
Water Supply	Satisfactory		-
Shade	Satisfactory		-
Power Tools	Satisfactory		-
Hand Tools	Satisfactory		-
Power Saws	Satisfactory		-
Personal Protective Equipment	Unsatisfactory		-
Electrical Safety	Satisfactory		-
Trenching/Excavation	Satisfactory		-
Confined Space	N/A		-
Fall Protection	Satisfactory		-
Ladder Safety	Unsatisfactory		-
Access/Egress	Satisfactory		-
Stairway/Ramps/Runways	Satisfactory		-
Heavy Equipment	Satisfactory		-
Crane/Rigging	Satisfactory	Rigging and attachments appeared to be maintained in excellent condition.	
Powder Actuated Tools	N/A		-
Cylinder Storage	Satisfactory		-
Floor/Roof/Wall Openings	N/A		-
Railing	Satisfactory		-
Material Storage	Satisfactory		-

Impalement Hazards	Satisfactory		-
Traffic Control	N/A		-
Scissor Lifts/Boom Lift	N/A		-
Powered Industrial Trucks	Satisfactory		-
Scaffolding/Shoring	Satisfactory		-
Suspended Scaffolding	N/A		-
Silica Items/Dust	Satisfactory	Excellent job with dust control.	
Hot Work	N/A		-
Housekeeping	Satisfactory		-
Roofing Operations	N/A		-
Demolition	N/A		-

## UNSATISFACTORY ITEMS

Photo	Comment	Corrective Action
	Mitchell employee is smoking within the project, which is prohibited.	Please ensure employees are informed that smoking is only allowed in designated smoking areas.
	Axis employee is not wearing his hard hat.	Hard hat was donned.
	Mitchell employees were not wearing a face covering when working within 6' of each other.	Face coverings were donned.



Amp employee is using an A-Frame ladder in a closed position.

Employee opened, locked, and leveled the ladder.