



# PROJECT INSPECTION

Generated by Safety Compliance App [www.safetycompliance.com](http://www.safetycompliance.com) | [www.safetycomplianceapp.com](http://www.safetycomplianceapp.com)

<b>Company</b>	Helio	<b>Type of Inspection:</b>	SCC USE ONLY: General Contractor Review
<b>Project</b>	Venue	<b>Date of Inspection</b>	April 18, 2022
<b>Inspector Name</b>	Jeremy Chavez	<b>Time of Inspection</b>	12:00 PM

## INSPECTION ITEMS

Item		Comment	Photo
Safety Manual	Satisfactory		-
Tailgate Meetings	Satisfactory		-
SDS	Satisfactory		-
Daily Inspection	Satisfactory		-
Sub-Contractor Meetings	Satisfactory		-
Labor Law Posters	Satisfactory		-
Codes/Emergency Posters	Satisfactory		-
Permits	Satisfactory		-
Fire Extinguisher	Satisfactory		-
Building Fire Extinguisher	Satisfactory		-
First Aid Kit	Satisfactory		-
First Aid/CPR Cert	Satisfactory		-
Restrooms/Wash Stations	Satisfactory		-
Waste Containers	Satisfactory		-
Water Supply	Satisfactory		-
Shade	Satisfactory		-
Power Tools	Satisfactory		-
Hand Tools	Satisfactory		-
Power Saws	Satisfactory		-
Personal Protective Equipment	Unsatisfactory		-
Electrical Safety	Satisfactory		-
Trenching/Excavation	N/A		-

Confined Space	N/A		-
Fall Protection	Unsatisfactory		-
Ladder Safety	Unsatisfactory		-
Access/Egress	Satisfactory		-
Stairway/Ramps/Runways	Unsatisfactory		-
Heavy Equipment	N/A		-
Crane/Rigging	N/A		-
Powder Actuated Tools	N/A		-
Cylinder Storage	N/A		-
Floor/Roof/Wall Openings	Satisfactory		-
Railing	Satisfactory		-
Material Storage	Satisfactory		-
Impalement Hazards	Satisfactory		-
Traffic Control	N/A		-
Scissor Lifts/Boom Lift	N/A		-
Powered Industrial Trucks	N/A		-
Scaffolding/Shoring	Unsatisfactory		-
Suspended Scaffolding	N/A		-
Silica Items/Dust	N/A		-
Hot Work	N/A		-
Housekeeping	Satisfactory		-
Roofing Operations	N/A		-
Demolition	N/A		-

## UNSATISFACTORY ITEMS

Photo	Comment	Corrective Action
-------	---------	-------------------



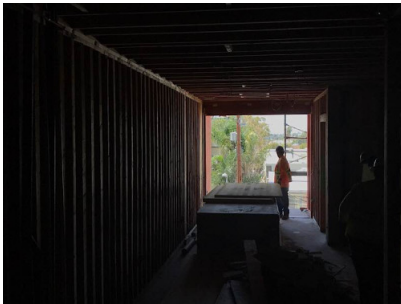
Employee is using a nail gun while not wearing safety glasses. Additionally, the employee must use a hard hat while on site.

The employee complied to don the required safety glasses and hard hat.



Employee is standing within 6' of an unprotected edge which exposes him to a significant fall hazard.

Employees must use personal fall protection when working above their trigger height. During framing operations, employees are allowed a 6' distance exception. Outside of framing activities, even though an employee is a framer, there is no safe distance from an unprotected edge. Distance is not a means of fall protection in such cases and a physical barrier must be provided.



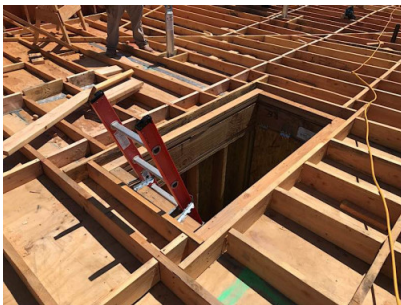
Employees have removed scaffold guardrails to load materials, which creates an unprotected edge and therefore a fall hazard.

Methods of fall protection while unloading materials was discussed with the employees, which may include the use of personal fall protection. There is no safe distance from an unprotected edge. Distance is not a means of fall protection in such cases and a physical barrier must be provided. Danger tape and caution tape do not qualify as a physical barrier.



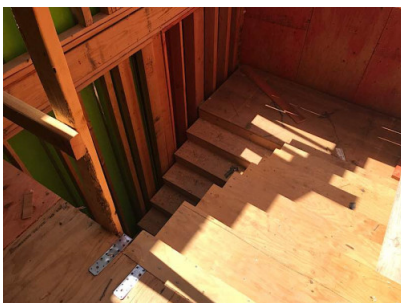
Employee is standing on the 2nd to top step of an A-Frame ladder, which is prohibited.

Please ensure employees use only the approved steps. This may require the use of a taller ladder.



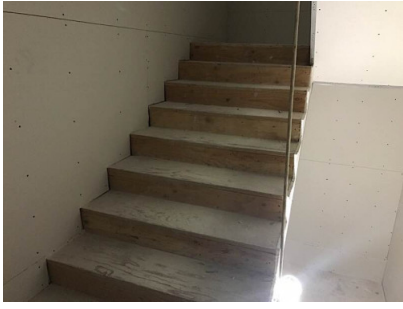
This access ladder essentially creates an open hole, which must be protected.

Please ensure a corral is installed as soon as possible.



A handrail is missing on this set of stairs.

Please ensure at least one handrail is installed where there are 4 or more risers.



This set of stairs is also missing a handrail. This is due to drywall recently being installed.

Please ensure at least one handrail is installed where there are 4 or more risers.



A guardrail is missing at this section of scaffolding.

By reinstalling the missing guardrail the fall hazard will be protected.