

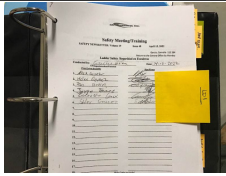




PROJECT INSPECTION

Generated by Safety Compliance App www.safetycompliance.com | www.safetycomplianceapp.com

Company	Helio	Type of Inspection:	SCC USE ONLY: General Contractor Review
Project	Venue	Date of Inspection	April 27, 2022
Inspector Name	Jeremy Chavez	Time of Inspection	09:15 AM

INSPECTION ITEMS

Item		Comment	Photo
Safety Manual	Satisfactory		-
Tailgate Meetings	Satisfactory	Tailgate meetings continue to be completed by sub contractors.	
SDS	Satisfactory		-
Daily Inspection	Satisfactory	Daily inspections are documented digitally.	-
Sub-Contractor Meetings	N/A		-
Labor Law Posters	Satisfactory		-
Codes/Emergency Posters	Satisfactory		-
Permits	Satisfactory		-
Fire Extinguisher	Satisfactory		-
Building Fire Extinguisher	Satisfactory		-
First Aid Kit	Satisfactory		-
First Aid/CPR Cert	Satisfactory		-
Restrooms/Wash Stations	Satisfactory		-
Waste Containers	Satisfactory		-
Water Supply	Satisfactory		-
Shade	Satisfactory		-
Power Tools	Satisfactory		-
Hand Tools	Satisfactory		-
Power Saws	Satisfactory		-

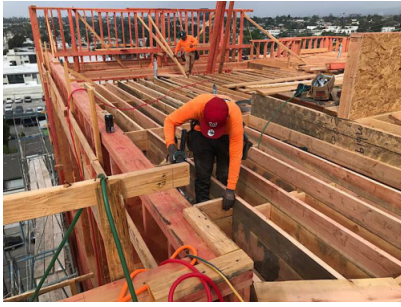
Personal Protective Equipment	Unsatisfactory		-
Electrical Safety	Satisfactory		-
Trenching/Excavation	N/A		-
Confined Space	N/A		-
Fall Protection	Unsatisfactory		-
Ladder Safety	Unsatisfactory		-
Access/Egress	Satisfactory		-
Stairway/Ramps/Runways	Satisfactory		-
Heavy Equipment	N/A		-
Crane/Rigging	N/A		-
Powder Actuated Tools	N/A		-
Cylinder Storage	N/A		-
Floor/Roof/Wall Openings	Satisfactory		-
Railing	Satisfactory		-
Material Storage	Satisfactory	Materials are well organized on the project. Good job.	
Impalement Hazards	Satisfactory		-
Traffic Control	N/A		-
Scissor Lifts/Boom Lift	N/A		-
Powered Industrial Trucks	N/A		-
Scaffolding/Shoring	Satisfactory		-
Suspended Scaffolding	N/A		-
Silica Items/Dust	N/A		-
Hot Work	N/A		-
Housekeeping	Satisfactory	Excellent job with housekeeping!	
Roofing Operations	N/A		-
Demolition	N/A		-

UNSATISFACTORY ITEMS

Photo

Comment

Corrective Action



Proffer employee is using a nail gun while not wearing safety glasses.

Employees must be provided with the required PPE, which includes safety glasses. The employees have the responsibility to wear safety glasses while using power tools or exposed to their hazards.



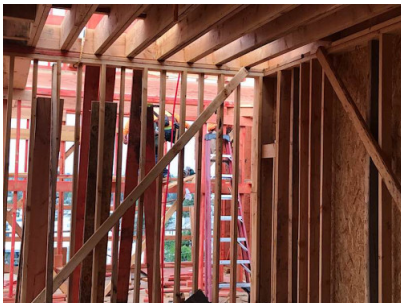
Another Proffer employee is using a nail gun while not wearing safety glasses.

Proffer employees must wear the required PPE, including safety glasses.



Proffer employees are exposed to a fall hazard above their trigger height while a means of fall protection is not in use.

A practical method to provide a means of fall protection is to install guardrails. Railing installed must be 42-45" top rail with a mid rail halfway between the top rail and the working platform.



Employees are using an A-Frame ladder in a closed position, which is prohibited.

Ladders must be open, locked, and level when in use. Only approved steps may be used.