




PROJECT INSPECTION

Generated by Safety Compliance App www.safetycompliance.com | www.safetycomplianceapp.com

Company	Helio	Type of Inspection:	SCC USE ONLY: General Contractor Review
Project	Venue	Date of Inspection	May 16, 2022
Inspector Name	Jeremy Chavez	Time of Inspection	11:15 AM

INSPECTION ITEMS

Item		Comment	Photo
Safety Manual	Satisfactory		-
Tailgate Meetings	Satisfactory		-
SDS	Satisfactory		-
Daily Inspection	Satisfactory		-
Sub-Contractor Meetings	Satisfactory		-
Labor Law Posters	Satisfactory		-
Codes/Emergency Posters	Satisfactory		-
Permits	Satisfactory		-
Fire Extinguisher	Satisfactory		-
Building Fire Extinguisher	Satisfactory		-
First Aid Kit	Satisfactory		-
First Aid/CPR Cert	Satisfactory		-
Restrooms/Wash Stations	Satisfactory		-
Waste Containers	Satisfactory		-
Water Supply	Satisfactory	There is potable water on site. A reminder was given that employees must be provided 2 gallons of cool potable water per employee.	
Shade	Satisfactory		-
Power Tools	Satisfactory		-
Hand Tools	Satisfactory		-
Power Saws	Satisfactory		-
Personal Protective Equipment	Unsatisfactory		-

Electrical Safety	Satisfactory		-
Trenching/Excavation	N/A		-
Confined Space	N/A		-
Fall Protection	N/A		-
Ladder Safety	Unsatisfactory		-
Access/Egress	Satisfactory		-
Stairway/Ramps/Runways	Satisfactory		-
Heavy Equipment	N/A		-
Crane/Rigging	N/A		-
Powder Actuated Tools	N/A		-
Cylinder Storage	N/A		-
Floor/Roof/Wall Openings	Satisfactory		-
Railing	Satisfactory		-
Material Storage	Unsatisfactory		-
Impalement Hazards	Satisfactory		-
Traffic Control	N/A		-
Scissor Lifts/Boom Lift	N/A		-
Powered Industrial Trucks	N/A		-
Scaffolding/Shoring	Unsatisfactory		-
Suspended Scaffolding	N/A		-
Silica Items/Dust	Satisfactory		-
Hot Work	Satisfactory		-
Housekeeping	Satisfactory		-
Roofing Operations	N/A		-
Demolition	N/A		-

UNSATISFACTORY ITEMS

Photo

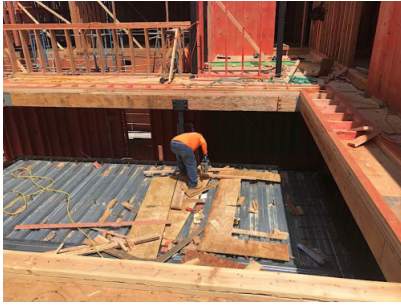
Comment

Corrective Action



This grinder does not have its guard equipped.

Please ensure a larger grinder is used for the size of cutting wheel that is needed. This will allow for the guard to be equipped.



Employee is not wearing safety glasses while using a skill saw.

Employees must wear ANSI Z87 safety glasses when using power tools that create flying particles.



Employee is not wearing safety glasses while using a skill saw.

Employees must wear ANSI Z87 safety glasses when using power tools that create flying particles.



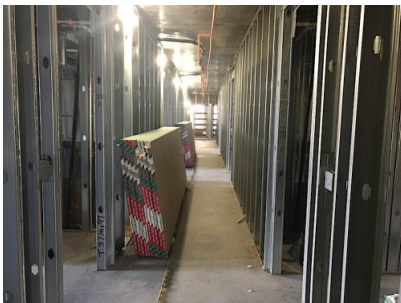
Employee is using a nail gun while not wearing safety glasses.

Employees must wear ANSI Z87 safety glasses when using power tools that create flying particles.



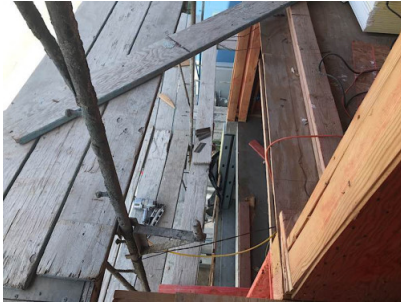
This access ladder does not have a corral, which creates an opening.

The superintendent reported stairs are scheduled to be completed to the roof tomorrow and the ladder will be removed. The opening will then be covered.



Drywall that is stacked vertically against a wall is not secured.

Please ensure materials such as drywall and plywood that is stacked vertically against a wall is secured from tipping, slipping, or falling.



Proffer employees are using a section of scaffolding that is missing the required planks and railing.

Scaffolding must be fully planked. One of the outrigger braces is missing, which in turn does not allow for a plank to be installed. Also, in areas where scaffolding exceeds 16" from the structure, railing on the scaffold and structure must be provided. Employees discontinued work in this area and the scaffold sub contractor was contacted.