



# PROJECT INSPECTION

Generated by Safety Compliance App [www.safetycompliance.com](http://www.safetycompliance.com) | [www.safetycomplianceapp.com](http://www.safetycomplianceapp.com)

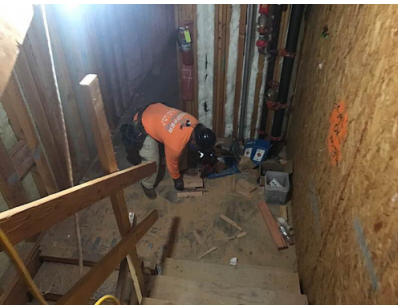
<b>Company</b>	Helio	<b>Type of Inspection:</b>	SCC USE ONLY: General Contractor Review
<b>Project</b>	Venue	<b>Date of Inspection</b>	June 22, 2022
<b>Inspector Name</b>	Jeremy Chavez	<b>Time of Inspection</b>	08:10 AM

## INSPECTION ITEMS

Item		Comment	Photo
Safety Manual	Satisfactory		-
Tailgate Meetings	N/A	Tailgate meetings that are reported to be completed need to be turned in by the sub contractors	-
SDS	Satisfactory		-
Daily Inspection	Satisfactory		-
Sub-Contractor Meetings	N/A		-
Labor Law Posters	Satisfactory		-
Codes/Emergency Posters	Satisfactory		-
Permits	Satisfactory		-
Fire Extinguisher	Satisfactory		-
Building Fire Extinguisher	Satisfactory		-
First Aid Kit	Satisfactory		-
First Aid/CPR Cert	Satisfactory		-
Restrooms/Wash Stations	Satisfactory		-
Waste Containers	Satisfactory		-
Water Supply	Satisfactory		-
Shade	Satisfactory		-
Power Tools	Satisfactory		-
Hand Tools	Satisfactory		-
Power Saws	Satisfactory		-
Personal Protective Equipment	Unsatisfactory		-
Electrical Safety	Satisfactory		-

Trenching/Excavation	N/A		-
Confined Space	N/A		-
Fall Protection	Unsatisfactory		-
Ladder Safety	Unsatisfactory		-
Access/Egress	Satisfactory		-
Stairway/Ramps/Runways	Satisfactory		-
Heavy Equipment	N/A		-
Crane/Rigging	N/A		-
Powder Actuated Tools	N/A		-
Cylinder Storage	N/A		-
Floor/Roof/Wall Openings	Satisfactory	See fall protection comments.	-
Railing	Unsatisfactory		-
Material Storage	Satisfactory		-
Impalement Hazards	N/A		-
Traffic Control	N/A		-
Scissor Lifts/Boom Lift	N/A		-
Powered Industrial Trucks	Unsatisfactory		-
Scaffolding/Shoring	Satisfactory		-
Suspended Scaffolding	N/A		-
Silica Items/Dust	N/A		-
Hot Work	N/A		-
Housekeeping	Satisfactory		-
Roofing Operations	N/A		-
Demolition	N/A		-

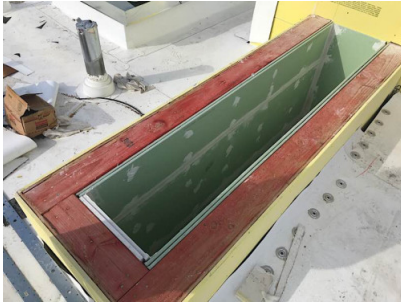
## UNSATISFACTORY ITEMS

Photo	Comment	Corrective Action
	<p>Employee is using a skill saw while not wearing safety glasses.</p>	<p>The employee complied to don his safety glasses.</p>



Employee is not wearing safety glasses while planning.

The employee immediately to don both his hard hat and safety glasses.



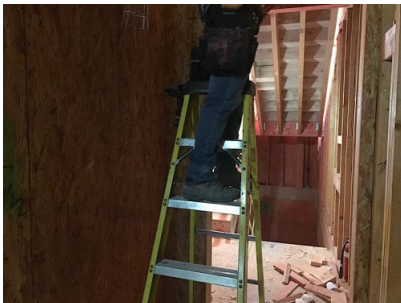
The pictured shaft is not covered, secured, and marked.

The superintendent assigned employees to cover, secure, and mark the opening "OPENING DO NOT REMOVE".



The pictured shaft is not fully covered, secured, and marked.

The superintendent assigned employees to cover, secure, and mark the opening "OPENING DO NOT REMOVE".



Employee is straddling an A-Frame ladder, which is prohibited.

The employee complied immediately to use the approved steps.



A mid rail is missing.

An employee was immediately assigned to reinstall a mid rail halfway between the top rail and the working platform.



Employee is operating a reach lift while not wearing his seatbelt.

The employee immediately secured his seatbelt.