



# PROJECT INSPECTION

Generated by Safety Compliance App [www.safetycompliance.com](http://www.safetycompliance.com) | [www.safetycomplianceapp.com](http://www.safetycomplianceapp.com)

<b>Company</b>	Helio	<b>Type of Inspection:</b>	SCC USE ONLY: General Contractor Review
<b>Project</b>	Venue	<b>Date of Inspection</b>	June 28, 2021
<b>Inspector Name</b>	Jeremy Chavez	<b>Time of Inspection</b>	11:30 AM

## INSPECTION ITEMS

Item		Comment	Photo
Safety Manual	Satisfactory		-
Tailgate Meetings	Satisfactory		-
SDS	Satisfactory		-
Daily Inspection	Satisfactory		-
Sub-Contractor Meetings	N/A		-
Labor Law Posters	Satisfactory		-
Codes/Emergency Posters	Satisfactory		-
Permits	Unsatisfactory	Project Permit is in the process of being obtained.	-
Fire Extinguisher	Satisfactory		-
Building Fire Extinguisher	Satisfactory		-
First Aid Kit	Satisfactory		-
First Aid/CPR Cert	Satisfactory		-
Restrooms/Wash Stations	Satisfactory		-
Waste Containers	Satisfactory		-
Water Supply	Satisfactory	As a general reminder, please ensure sub contractors provide 2 gallons of water per employee on site.	-
Shade	Satisfactory		-
Power Tools	Satisfactory		-
Hand Tools	Satisfactory		-
Power Saws	Satisfactory		-
Personal Protective Equipment	Unsatisfactory		-

Electrical Safety	Satisfactory		-
Trenching/Excavation	Satisfactory		-
Confined Space	N/A		-
Fall Protection	Unsatisfactory		-
Ladder Safety	Unsatisfactory	With such prevalence of ladder violations, please ensure sub contractors provide proof of re-training.	-
Access/Egress	Satisfactory		-
Stairway/Ramps/Runways	Satisfactory		-
Heavy Equipment	N/A		-
Crane/Rigging	N/A		-
Powder Actuated Tools	N/A		-
Cylinder Storage	N/A		-
Floor/Roof/Wall Openings	Satisfactory		-
Railing	Satisfactory		-
Material Storage	Satisfactory		-
Impalement Hazards	Satisfactory		-
Traffic Control	N/A		-
Scissor Lifts/Boom Lift	N/A		-
Powered Industrial Trucks	Unsatisfactory		-
Scaffolding/Shoring	N/A		-
Suspended Scaffolding	N/A		-
Silica Items/Dust	Satisfactory		-
Hot Work	N/A		-
Housekeeping	Satisfactory		-
Roofing Operations	N/A		-
Demolition	N/A		-

## UNSATISFACTORY ITEMS

Photo	Comment	Corrective Action
-		

--	--	--



Framer is using sunglasses that are not ANSI rated.

Please ensure safety glasses that are ANSI Z87+ are worn.



Employee does not have the leg straps secured.

Leg straps were secured.



Employee is using an A-Frame ladder in a closed position.

A-Frame ladders must open, locked, and level when in use.



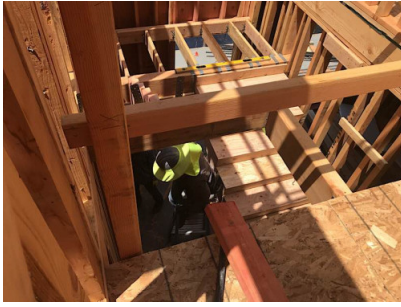
Framer was using an A-Frame ladder in a closed position. He jumped off the ladder when he saw photo documentation was being made.

A-Frame ladders must open, locked, and level when in use.



Framer is using an A-Frame ladder in a closed position.

A-Frame ladders must open, locked, and level when in use.



Framer is using the top steps to transfer from the upper platform to the lower platform.

Please ensure only approved steps are used. Adequate access must be provided.



Framing employee is not wearing his seatbelt.

Seatbelt was secured.