



PROJECT INSPECTION

Generated by Safety Compliance App www.safetycompliance.com | www.safetycomplianceapp.com


| | | | |
|-----------------------|---------------|----------------------------|--|
| Company | Helio | Type of Inspection: | SCC USE ONLY: General Contractor Review |
| Project | Venue | Date of Inspection | July 21, 2021 |
| Inspector Name | Jeremy Chavez | Time of Inspection | 09:30 AM |

INSPECTION ITEMS

| Item | | Comment | Photo |
|-------------------------------|----------------|---------|-------|
| Safety Manual | Satisfactory | | - |
| Tailgate Meetings | Satisfactory | | - |
| SDS | Satisfactory | | - |
| Daily Inspection | Satisfactory | | - |
| Sub-Contractor Meetings | N/A | | - |
| Labor Law Posters | Satisfactory | | - |
| Codes/Emergency Posters | Satisfactory | | - |
| Permits | Unsatisfactory | | - |
| Fire Extinguisher | Satisfactory | | - |
| Building Fire Extinguisher | Satisfactory | | - |
| First Aid Kit | Satisfactory | | - |
| First Aid/CPR Cert | Satisfactory | | - |
| Restrooms/Wash Stations | Satisfactory | | - |
| Waste Containers | Satisfactory | | - |
| Water Supply | Satisfactory | | - |
| Shade | Satisfactory | | - |
| Power Tools | Satisfactory | | - |
| Hand Tools | Satisfactory | | - |
| Power Saws | Satisfactory | | - |
| Personal Protective Equipment | Unsatisfactory | | - |
| Electrical Safety | Satisfactory | | - |
| Trenching/Excavation | Satisfactory | | - |

| | | | |
|---------------------------|----------------|--|---|
| Confined Space | N/A | | - |
| Fall Protection | N/A | | - |
| Ladder Safety | Unsatisfactory | | - |
| Access/Egress | Unsatisfactory | | - |
| Stairway/Ramps/Runways | Satisfactory | | - |
| Heavy Equipment | N/A | | - |
| Crane/Rigging | N/A | | - |
| Powder Actuated Tools | N/A | | - |
| Cylinder Storage | N/A | | - |
| Floor/Roof/Wall Openings | Satisfactory | | - |
| Railing | Satisfactory | | - |
| Material Storage | Satisfactory | | - |
| Impalement Hazards | Satisfactory | | - |
| Traffic Control | N/A | | - |
| Scissor Lifts/Boom Lift | N/A | | - |
| Powered Industrial Trucks | Unsatisfactory | | - |
| Scaffolding/Shoring | Unsatisfactory | | - |
| Suspended Scaffolding | N/A | | - |
| Silica Items/Dust | Satisfactory | | - |
| Hot Work | N/A | | - |
| Housekeeping | Satisfactory | | - |
| Roofing Operations | N/A | | - |
| Demolition | N/A | | - |

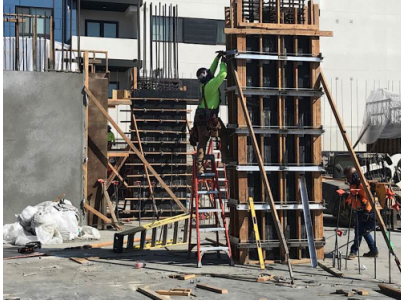
UNSATISFACTORY ITEMS

| Photo | Comment | Corrective Action |
|--|--|--|
| - | Project Permit is in the process of being obtained. | Consultation has been completed with OSHA. Waiting for the permit to arrive. |
|  | Employee is using a grinder while not wearing safety glasses. Additionally the employee is not wearing a hard hat. | Safety glasses and a hard hat must be worn. |



Employee is using a nail gun while not wearing safety glasses.

Please ensure employees wear the required PPE.



Employee is standing on unapproved steps.

Please ensure employees do not stand on the 2nd to top or top step.



Employee is standing on unapproved steps.

Please ensure employees do not stand on the 2nd to top or top step.



A second set of stairs has not been installed in building B.

Please ensure stairs are installed as soon as possible.



Employee is operating a reach lift while not wearing a seatbelt.

Please ensure employees wear the required seatbelt.



Employee is operating a reach lift while not wearing a seatbelt.

Please ensure employees wear the required seatbelt.



Employees are using a single plank for scaffolding, which is unapproved.

Please ensure scaffolding is a minimum 20" wide and "fully planked."