




PROJECT INSPECTION

Generated by Safety Compliance App www.safetycompliance.com | www.safetycomplianceapp.com

Company	Helio	Type of Inspection:	SCC USE ONLY: General Contractor Review
Project	Venue	Date of Inspection	July 21, 2022
Inspector Name	Jeremy Chavez	Time of Inspection	08:15 AM

INSPECTION ITEMS

Item		Comment	Photo
Safety Manual	Satisfactory		-
Tailgate Meetings	N/A	Superintendent is working on receiving the most recents copies of tailgate meetings.	-
SDS	Satisfactory		-
Daily Inspection	Satisfactory	Today's inspection report has been completed. As a general reminder, please ensure the inspection is documented daily and includes safety items that need to be, or have been corrected.	
Sub-Contractor Meetings	N/A		-
Labor Law Posters	Satisfactory		-
Codes/Emergency Posters	Satisfactory		-
Permits	Satisfactory		-
Fire Extinguisher	Satisfactory		-
Building Fire Extinguisher	Satisfactory		-
First Aid Kit	Satisfactory		-
First Aid/CPR Cert	Satisfactory		-
Restrooms/Wash Stations	Satisfactory		-
Waste Containers	Satisfactory		-
Water Supply	Satisfactory		-
Shade	Satisfactory		-
Power Tools	Satisfactory		-
Hand Tools	Satisfactory		-

Power Saws	Satisfactory		-
Personal Protective Equipment	Unsatisfactory		-
Electrical Safety	Satisfactory		-
Trenching/Excavation	N/A		-
Confined Space	N/A		-
Fall Protection	N/A		-
Ladder Safety	Unsatisfactory		-
Access/Egress	Satisfactory		-
Stairway/Ramps/Runways	Satisfactory		-
Heavy Equipment	N/A		-
Crane/Rigging	N/A		-
Powder Actuated Tools	N/A		-
Cylinder Storage	N/A		-
Floor/Roof/Wall Openings	Satisfactory		-
Railing	Unsatisfactory		-
Material Storage	Unsatisfactory		-
Impalement Hazards	Satisfactory		-
Traffic Control	N/A		-
Scissor Lifts/Boom Lift	N/A		-
Powered Industrial Trucks	N/A		-
Scaffolding/Shoring	Satisfactory		-
Suspended Scaffolding	N/A		-
Silica Items/Dust	Satisfactory		-
Hot Work	N/A		-
Housekeeping	Unsatisfactory		-
Roofing Operations	N/A		-
Demolition	N/A		-

UNSATISFACTORY ITEMS

Photo	Comment	Corrective Action
-------	---------	-------------------



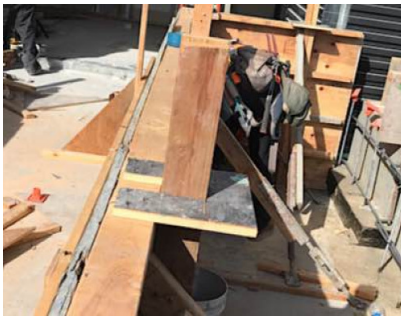
Several employees do not have the required PPE donned, which includes their hard hat.

Employees were reminded that a hard hat, safety glasses, and hi vis apparel are jobsite requirements. Employees stopped work to obtain the needed PPE.



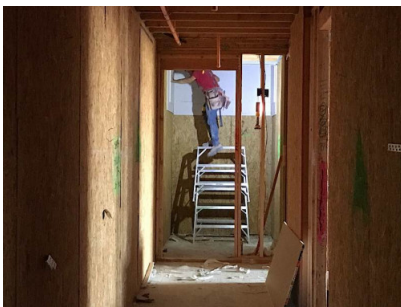
Employee is using a nail gun while not wearing safety glasses.

The employee complied to don his safety glasses.



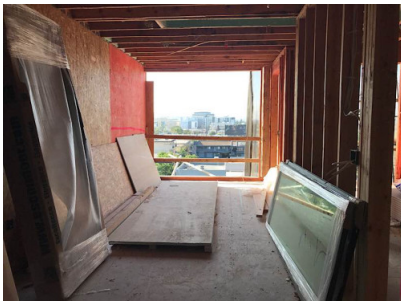
Employee is using a skillsaw while not wearing safety glasses.

The employee complied to wear his safety glasses.



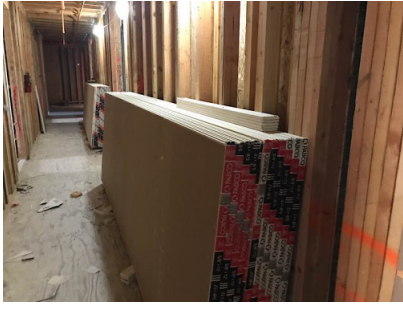
Employee has two A-Frame ladders stacked on top of each other to gain a higher elevation which is prohibited.

The employee will obtain a taller ladder to gain the needed elevation.



Railing exceeds the maximum 8' between vertical posts.

Please ensure vertical posts for guardrails span no more than 8' between posts.



Drywall that is leaned against a wall has not been secured from tipping, slipping, or falling.

Please ensure drywall that is leaned against a wall is secured from tipping, slipping, or falling.



Housekeeping in the pictured area needs to give attention to materials and debris in a walkway.

Please ensure a clear walkway is maintained in the area pictured.