



PROJECT INSPECTION

Generated by Safety Compliance App www.safetycompliance.com | www.safetycomplianceapp.com


Company	Helio	Type of Inspection:	SCC USE ONLY: General Contractor Review
Project	Venue	Date of Inspection	August 16, 2021
Inspector Name	Jeremy Chavez	Time of Inspection	08:48 AM

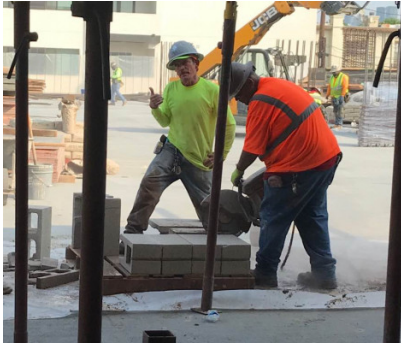
INSPECTION ITEMS

Item		Comment	Photo
Safety Manual	Satisfactory		-
Tailgate Meetings	Satisfactory		-
SDS	Satisfactory		-
Daily Inspection	Satisfactory		-
Sub-Contractor Meetings	N/A		-
Labor Law Posters	Satisfactory		-
Codes/Emergency Posters	Satisfactory		-
Permits	Satisfactory		-
Fire Extinguisher	Satisfactory		-
Building Fire Extinguisher	Satisfactory		-
First Aid Kit	Satisfactory		-
First Aid/CPR Cert	Satisfactory		-
Restrooms/Wash Stations	Satisfactory		-
Waste Containers	Satisfactory		-
Water Supply	Satisfactory		-
Shade	Satisfactory		-
Power Tools	Satisfactory		-
Hand Tools	Satisfactory		-
Power Saws	Unsatisfactory		-
Personal Protective Equipment	Unsatisfactory		-
Electrical Safety	Satisfactory		-
Trenching/Excavation	N/A		-

Confined Space	N/A		-
Fall Protection	Unsatisfactory		-
Ladder Safety	Unsatisfactory		-
Access/Egress	Unsatisfactory	A second set of stairs is pending in building B.	-
Stairway/Ramps/Runways	Unsatisfactory	See access comments.	-
Heavy Equipment	N/A		-
Crane/Rigging	N/A		-
Powder Actuated Tools	N/A		-
Cylinder Storage	Satisfactory		-
Floor/Roof/Wall Openings	Satisfactory		-
Railing	Satisfactory		-
Material Storage	Satisfactory		-
Impalement Hazards	Unsatisfactory		-
Traffic Control	N/A		-
Scissor Lifts/Boom Lift	N/A		-
Powered Industrial Trucks	Unsatisfactory		-
Scaffolding/Shoring	Satisfactory		-
Suspended Scaffolding	N/A		-
Silica Items/Dust	Satisfactory		-
Hot Work	N/A		-
Housekeeping	Satisfactory		-
Roofing Operations	N/A		-
Demolition	N/A		-

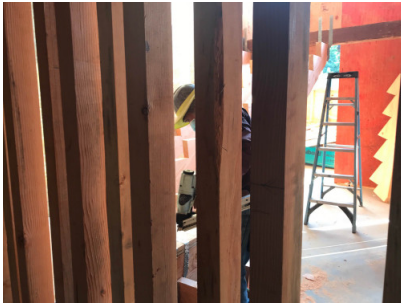
UNSATISFACTORY ITEMS

Photo	Comment	Corrective Action
	<p>Employee has a saw with a guard that gets stuck in the open position. Additionally the employee was not wearing safety glasses while operating the saw.</p>	<p>Please ensure tools are maintained and safety glasses are worn.</p>



Employee is not wearing safety glasses while assisting the operator of a saw.

Please ensure safety glasses are worn when required.



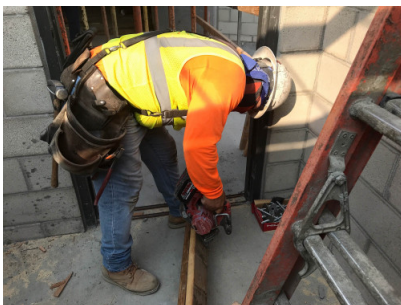
Employee is not wearing safety glasses while operating a nail gun.

Please ensure employees wear safety glasses when required.



Employee was not wearing safety glasses while operating a nail gun.

Please ensure employees wear safety glasses when required.



Employee is not wearing safety glasses while operating a saw.

Please ensure employees wear safety glasses when required.



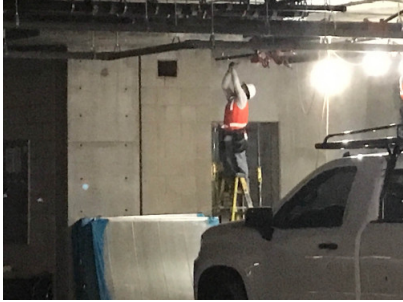
Employee is installing guardrails and is exposed to a fall hazard while not wearing personal fall protection.

Personal fall protection must be implemented when working above their trigger height.



Employee is using an A-Frame ladder in a closed position.

A-Frame ladders must be open, locked, and leveled.



Employee is standing on the 2nd to top step of an A-Frame ladder.

Employee went to get a taller ladder and used the approved steps.

-

-



Impalement hazards must be capped or covered.

The superintendent is aware of this requirement and employees have been assigned to make the necessary corrections.



Employee is operating a reach lift while not wearing his seatbelt.

Please ensure employees wear their seatbelt when operating equipment.