



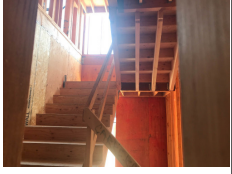

PROJECT INSPECTION

Generated by Safety Compliance App www.safetycompliance.com | www.safetycomplianceapp.com

Company	Helio	Type of Inspection:	SCC USE ONLY: General Contractor Review
Project	Venue	Date of Inspection	August 30, 2021
Inspector Name	Jeremy Chavez	Time of Inspection	11:20 AM

INSPECTION ITEMS

Item		Comment	Photo
Safety Manual	Satisfactory		-
Tailgate Meetings	Satisfactory		-
SDS	Satisfactory		-
Daily Inspection	Satisfactory		-
Sub-Contractor Meetings	N/A		-
Labor Law Posters	Satisfactory		-
Codes/Emergency Posters	Satisfactory		-
Permits	Satisfactory		-
Fire Extinguisher	Satisfactory		-
Building Fire Extinguisher	Unsatisfactory		-
First Aid Kit	Satisfactory		-
First Aid/CPR Cert	Satisfactory		-
Restrooms/Wash Stations	Satisfactory		-
Waste Containers	Satisfactory		-
Water Supply	Satisfactory		-
Shade	Satisfactory		-
Power Tools	Satisfactory		-
Hand Tools	Satisfactory		-
Power Saws	Satisfactory		-
Personal Protective Equipment	Unsatisfactory		-
Electrical Safety	Satisfactory		-
Trenching/Excavation	N/A		-

Confined Space	N/A		-
Fall Protection	N/A		-
Ladder Safety	Unsatisfactory		-
Access/Egress	Satisfactory	Two sets of stairs to the top level are now installed in building B.	
Stairway/Ramps/Runways	Satisfactory		-
Heavy Equipment	N/A		-
Crane/Rigging	N/A		-
Powder Actuated Tools	N/A		-
Cylinder Storage	Satisfactory		-
Floor/Roof/Wall Openings	Satisfactory		-
Railing	Unsatisfactory		-
Material Storage	Satisfactory		-
Impalement Hazards	Unsatisfactory		-
Traffic Control	Satisfactory		-
Scissor Lifts/Boom Lift	N/A		-
Powered Industrial Trucks	Unsatisfactory		-
Scaffolding/Shoring	Satisfactory		-
Suspended Scaffolding	N/A		-
Silica Items/Dust	Satisfactory		-
Hot Work	N/A		-
Housekeeping	Satisfactory	Excellent job with housekeeping.	
Roofing Operations	N/A		-
Demolition	N/A		-

UNSATISFACTORY ITEMS

Photo

Comment

Corrective Action



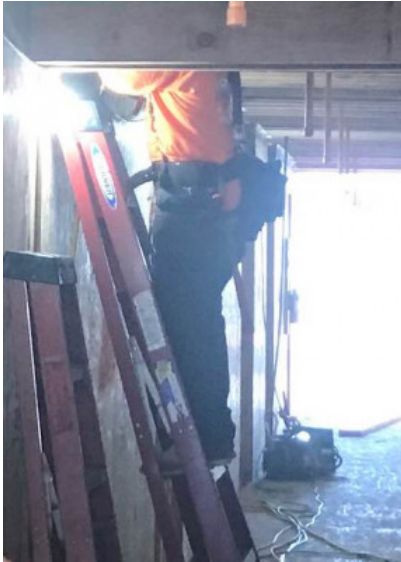
Sheathing was just installed and brackets holding the fire extinguisher were removed.

The brackets will be reinstalled soon.



Employee is operating a nail gun while wearing sunglasses.

Discussed using ANSI Z87+ safety glasses.



Employee is using an A-Frame ladder in a closed position.

Employee complied to use the ladder in an open, locked, and level position.



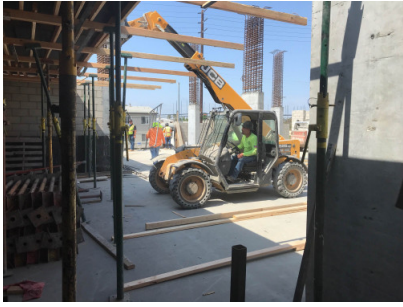
Guardrails have been removed in this loading/unloading zone.

Discussed methods of fall protection while loading/unloading material.



Rebar must be capped.

Ensure caps are installed.



Employee is operating a reach lift while not wearing his seatbelt.

Please ensure employees wear their seatbelt when operating equipment.