



# PROJECT INSPECTION

Generated by Safety Compliance App [www.safetycompliance.com](http://www.safetycompliance.com) | [www.safetycomplianceapp.com](http://www.safetycomplianceapp.com)


<b>Company</b>	Helio	<b>Type of Inspection:</b>	SCC USE ONLY: General Contractor Review
<b>Project</b>	Venue	<b>Date of Inspection</b>	September 19, 2022
<b>Inspector Name</b>	Jeremy Chavez	<b>Time of Inspection</b>	09:25 AM

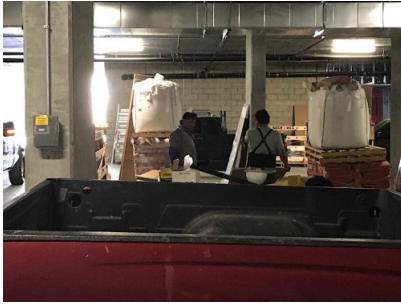
## INSPECTION ITEMS

Item		Comment	Photo
Safety Manual	Satisfactory		-
Tailgate Meetings	N/A	Chris will confirm all sub contractors are submitting their tailgate meetings.	-
SDS	N/A		-
Daily Inspection	Satisfactory		-
Sub-Contractor Meetings	N/A		-
Labor Law Posters	Satisfactory		-
Codes/Emergency Posters	Satisfactory		-
Permits	Satisfactory		-
Fire Extinguisher	Unsatisfactory		-
Building Fire Extinguisher	Satisfactory	See fire extinguisher comments.	-
First Aid Kit	Satisfactory		-
First Aid/CPR Cert	Satisfactory		-
Restrooms/Wash Stations	Satisfactory		-
Waste Containers	Satisfactory		-
Water Supply	Satisfactory		-
Shade	Satisfactory		-
Power Tools	Satisfactory		-
Hand Tools	Satisfactory		-
Power Saws	Satisfactory		-
Personal Protective Equipment	Unsatisfactory		-
Electrical Safety	Satisfactory		-

Trenching/Excavation	N/A		-
Confined Space	N/A		-
Fall Protection	N/A		-
Ladder Safety	Satisfactory		-
Access/Egress	Satisfactory		-
Stairway/Ramps/Runways	Satisfactory		-
Heavy Equipment	N/A		-
Crane/Rigging	N/A		-
Powder Actuated Tools	N/A		-
Cylinder Storage	N/A		-
Floor/Roof/Wall Openings	Satisfactory		-
Railing	Satisfactory		-
Material Storage	Satisfactory		-
Impalement Hazards	Unsatisfactory		-
Traffic Control	N/A		-
Scissor Lifts/Boom Lift	N/A		-
Powered Industrial Trucks	N/A		-
Scaffolding/Shoring	Unsatisfactory		-
Suspended Scaffolding	N/A		-
Silica Items/Dust	N/A		-
Hot Work	N/A		-
Housekeeping	Unsatisfactory		-
Roofing Operations	N/A		-
Demolition	N/A		-

## UNSATISFACTORY ITEMS

Photo	Comment	Corrective Action
	<p>This months inspection has not been completed.</p>	<p>Discussed the monthly inspection. Please ensure fire extinguishers are fully charged, have their pin and seal, are not damaged, appear to function, and are turned upside down about 5 times.</p>



Employees do not have the required PPE donned, which includes a hard hat.

Please ensure employees wear their PPE. Due to the inherent hazards of working/walking on a construction site, a hard hat should be worn. When employees must carry materials on their shoulders, such as in the case of the employees pictured, a brimless hard hat is recommended.



Employee is using an A-Frame ladder in a closed position.

Employees must use an A-Frame ladder in an open, locked, and level position.



Employee is using an A-Frame ladder in a closed position.

Employees must use an A-Frame ladder in an open, locked, and level position.



Employee is using an A-Frame ladder in a closed position.

Employees must use an A-Frame ladder in an open, locked, and level position.



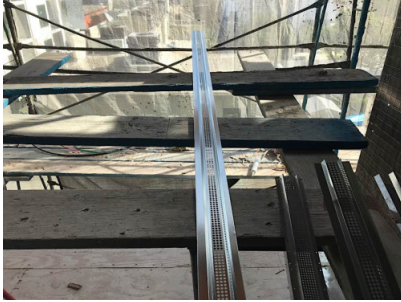
Metal stakes below 6' in height are presenting an impalement hazard.

Please ensure the stakes are removed or covered.



An employee is using materials to create a makeshift scaffold, which is prohibited.

Please ensure employees use approved scaffolding to gain elevation.



Employees are using a scaffold that has several issues. The scaffold is not fully planked, several plank's condition have deteriorated making it not fit for use, planks are resting on guardrails, and some planks are not between 6-12" over a supporting brace.

Please ensure the above corrections are provided.



Cords and debris are creating tripping hazards in a walkway.

Please ensure a clear walkway is maintained throughout the project.