



PROJECT INSPECTION

Generated by Safety Compliance App www.safetycompliance.com | www.safetycomplianceapp.com

Company	Helio	Type of Inspection:	SCC USE ONLY: General Contractor Review
Project	Venue	Date of Inspection	September 09, 2021
Inspector Name	Jeremy Chavez	Time of Inspection	09:40 AM

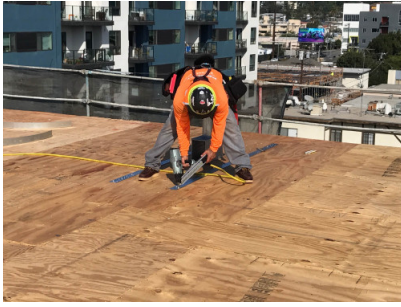
INSPECTION ITEMS

Item		Comment	Photo
Safety Manual	Satisfactory		-
Tailgate Meetings	Satisfactory		-
SDS	Satisfactory		-
Daily Inspection	Satisfactory		-
Sub-Contractor Meetings	N/A		-
Labor Law Posters	Satisfactory		-
Codes/Emergency Posters	Satisfactory		-
Permits	Satisfactory		-
Fire Extinguisher	Satisfactory		-
Building Fire Extinguisher	Satisfactory		-
First Aid Kit	Satisfactory		-
First Aid/CPR Cert	Satisfactory		-
Restrooms/Wash Stations	Satisfactory		-
Waste Containers	Satisfactory		-
Water Supply	Satisfactory		-
Shade	Satisfactory		-
Power Tools	Satisfactory		-
Hand Tools	Satisfactory		-
Power Saws	Satisfactory		-
Personal Protective Equipment	Unsatisfactory		-
Electrical Safety	Satisfactory		-
Trenching/Excavation	N/A		-

Confined Space	N/A		-
Fall Protection	Satisfactory		-
Ladder Safety	Unsatisfactory	Proffer has had reoccurring ladder safety violations. Discussed with the superintendent and foreman providing a safety training regarding ladder safety. We also discussed the need for enforcement.	-
Access/Egress	Satisfactory		-
Stairway/Ramps/Runways	Satisfactory		-
Heavy Equipment	N/A		-
Crane/Rigging	N/A		-
Powder Actuated Tools	N/A		-
Cylinder Storage	Satisfactory		-
Floor/Roof/Wall Openings	Satisfactory		-
Railing	Satisfactory		-
Material Storage	Satisfactory		-
Impalement Hazards	Unsatisfactory		-
Traffic Control	N/A		-
Scissor Lifts/Boom Lift	N/A		-
Powered Industrial Trucks	Unsatisfactory		-
Scaffolding/Shoring	Satisfactory	As a general reminder on the roof, due to the scaffold planks not reaching the height of the deck, the scaffold is not considered fall protection. A means of fall protection must be provided, such as guardrails or personal fall protection.	-
Suspended Scaffolding	N/A		-
Silica Items/Dust	Satisfactory		-
Hot Work	N/A		-
Housekeeping	Satisfactory		-
Roofing Operations	N/A		-
Demolition	N/A		-

UNSATISFACTORY ITEMS

Photo	Comment	Corrective Action
-------	---------	-------------------



Employee is using a nail gun while wearing sunglasses that are not ANSI rated.

Safety glasses were donned.



Employee is using an A-Frame ladder in a closed position.

Please ensure A-Frame ladders are used in an open, locked, and level position.



Employee was observed using an A-Frame ladder in a closed position.

Please ensure A-Frame ladders are used in an open, locked, and level position.



Employee stood on the top 2 steps of an A-Frame ladder to gain access to the scaffold.

Please ensure approved access ladders are used for scaffold access.



Rebar caps are missing.

Please ensure rebar caps are installed.



A reach lift is unattended while a load is lifted.

Please ensure the operator is within 25' and line of sight while the load is lifted.