



# SAFETY TAILGATE MEETING

Generated by Safety Compliance App [www.safetycompliance.com](http://www.safetycompliance.com) | [www.safetycomplianceapp.com](http://www.safetycomplianceapp.com)

|         |                               |         |                  |           |          |
|---------|-------------------------------|---------|------------------|-----------|----------|
| Company | Mark Wilson Construction, Inc | Project | Clovis West Pool |           |          |
| Date    | October 17, 2022              | Time    | 7:00 AM          | Conductor | Jon Turl |

## SKID STEER SAFETY

### INTRODUCTION

"Skid Steers" are efficient machines that can operate in tighter spaces than backhoes, excavators and other large pieces of equipment. However, when not used safely they can cause harm to the operator and others.

In our meeting, we will discuss:

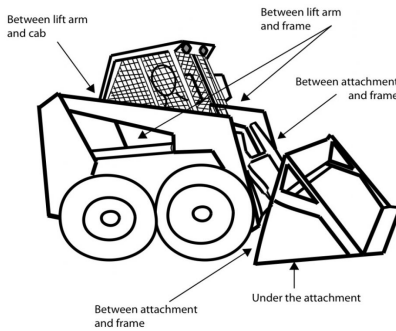
- (1) DANGERS OF OPERATION**
- (2) OPERATING THEM SAFELY**
- (3) FATALITIES TO LEARN FROM**

### DANGERS OF OPERATION

There are many dangers when operating or working around a skid steer.

**CRUSHING HAZARD:** These exist when the operator enters and exits, during operation and when performing maintenance. Even when the loader is equipped with interlocks, those interlocks are not fool proof.

## Don't Get Crushed by Moving Parts



**Moving Parts Can Crush You**

**ROLLOVER:** An unstable machine can tip over. Overloading, carrying to high, operating on rough or uneven surfaces, and driving too fast for the conditions can cause the machine to be unstable.

**OTHER HAZARDS:** These include working around electrical lines, and hitting property and other people.

**OPERATING THEM SAFELY**

- Only operate a skid steer if you have been properly trained and approved by our company to operate them safely.
- Become well acquainted with how the machine works, including reading the manufacturer instructions. Pay attention to the warning signs.
- Perform an inspection of the equipment daily prior to use per the manufacturer instructions.
- Never leave the operator seat while the machine is running or the lift arms are raised.
- Never start or operate the controls from outside the cab.
- Always wear the seat belt and safety bar while operating.
- Never lift over someone else. Pay close attention to where others are working.

Remember: You must be in total control and must operate safely!

## FATALITIES TO LEARN FROM

**FATALITY 1:** With the engine running, an operator stuck his side out the side opening to check a flat tire. His foot accidentally hit the controls, causing the lift arm to raise. He was killed when his head was crushed against the hydraulic piston. (The guard on the opening had fallen out and was not replaced).

### Group Discussion:

- What can we learn from this?

**FATALITY 2:** An operator was driving with a load of soil in the bucket when the loader hit a rock and tipped forward, ejecting the operator. The loader ran him over, pinning him under the front wheels. An investigation showed the safety belt was missing a buckle.

### Group Discussion:

- What can we learn from this?

## GROUP IMAGE



---

**Attendees Names**

**Attendees Signatures**

Jon Turl

cody stephens

**CONDUCTOR SIGNATURE**

A handwritten signature in black ink, consisting of several stylized, overlapping loops and lines, located in the upper left corner of the page.

Copyright ©2018 Safety Compliance Company. All rights reserved. This document is intended as a safety tailgate meeting and does not contain all OSHA regulations. Please refer to OSHA and other state and federal agencies for further and current regulations. Not to be duplicated or distributed for use without the express written consent of Safety Compliance Company