



# SAFETY TAILGATE MEETING

Generated by Safety Compliance App [www.safetycompliance.com](http://www.safetycompliance.com) | [www.safetycomplianceapp.com](http://www.safetycomplianceapp.com)

Company	Mark Wilson Construction, Inc	Project	Central HS - Ag Barn		
Date	December 16, 2024	Time	7:00 AM	Conductor	Vince Balbas

## HAZARD COMMUNICATION | GHS

### INTRODUCTION

If you were to see a “DANGER - DO NOT ENTER” sign along a fence, would you cross the fence as if there was no danger? No, you would keep out! However, suppose you had to enter the area. What two questions would you want to know the answer to before proceeding?

- (1) What is the danger?
- (2) How do I protect myself?

Chemicals don't have a big sign like this. But they many times say “DANGER”. It is usually in small print. We never want to use a chemical without knowing the clear answers to the same two questions.



In this meeting, we will discuss the following:

- (1) WHAT IS HAZARD COMMUNICATION?
- (2) WHAT IS GHS?

### WHAT IS HAZARD COMMUNICATION?

The Hazard Communication Standard (HCS) is a standard implemented by OSHA. The fundamental principle is that each employee has a "Right to Know" the hazards of the hazardous materials they work with and how to protect themselves. Under the standard, employers have an obligation to train their employees.

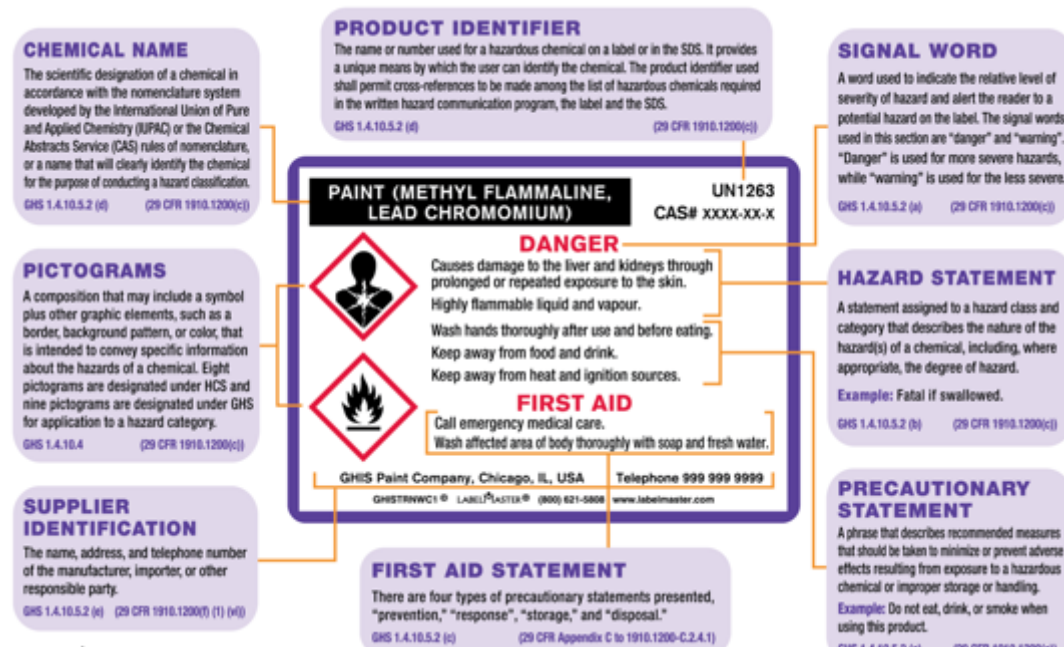
# WHAT IS GHS?

GHS stands for "Globally Harmonized System". As part of the HCS, the United Nations (UN) adopted the GHS of Classification and labeling of chemicals. There are two primary changes.

1. Container labeling requirements have changed.
2. Material Safety Data Sheet (MSDS) was changed to

Safety Data Sheet (SDS).

THE LABEL has eight sections that provide quick information into the dangers and how to protect ourselves. There are also nine new pictograms.



The SDS now has 16 standardized sections. For example, we now know that "Hazards Identification" will always be section two, and "First Aid Measures" will always be section four.

### Group Discussion:

1. What is Hazard Communication?
2. What is GHS
3. What is new about the label?

**Attendees Names**  
vince Balbas

**Attendees Signatures**  
N/A

## CONDUCTOR SIGNATURE

A handwritten signature in black ink, appearing to read 'AP' above 'VB'. The letters are stylized and cursive.