

# SAFETY INSPECTION REPORT

**CONDUCTED FOR:**  
Accel Framing & General Contracting

**PROJECT:**  
Manning St



**INSPECTION TYPE:**  
General Construction

**INSPECTOR:** JEREMY CHAVEZ  
**DATE:** FEBRUARY 19, 2025  
**CITY:** SAN DIEGO  
**STATE:** CA  
**SITE CONTACT:** CARLOS NEGRETE  
**ADDITIONAL SITE CONTACT:** N/A

Safety Compliance Company is not responsible for unsafe conditions and situations not seen during this inspection. The items listed above represent only what was seen by the Safety Compliance Company Representative at the time of the inspection. Safety Compliance Company is not responsible for any ongoing unsafe condition(s) whether seen or unseen. In addition, Safety Compliance Company does not have the authority or authorization to approve, certify, or warranty any safety equipment or safety device. This agreement also indemnifies Safety Compliance Company of any omission, gross negligence, willful misconduct related to this report. Under Federal, State and Local Law, it is the responsibility of the employer and all subcontractors to mark all hazards with appropriate signs

# SUMMARY OF INSPECTION

**52**  
Items Inspected

**25**  
Satisfactory

**1**  
Unsatisfactory

**26**  
N/A

## INSPECTION ITEMS

### Documentation

Safety Program (Including IIPP)

Satisfactory

Heat Illness Prevention Program

Satisfactory

Safety Data Sheets

Satisfactory

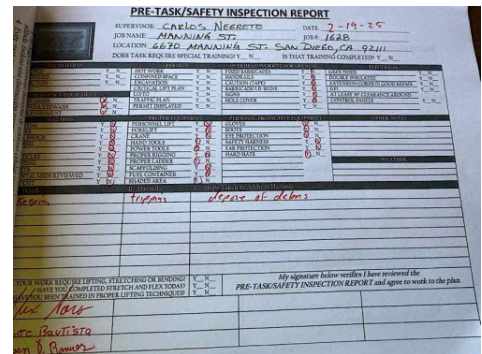
### Daily Inspections

Satisfactory

#### Comment

-

Daily inspections are being performed



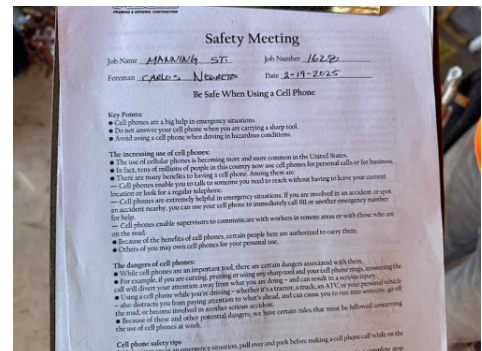
### Tailgate Meetings

Satisfactory

#### Comment

-

Tailgates are being conducted at least every 10 working days



<b>Sub-Contractor Meetings</b>	<b>N/A</b>
--------------------------------	------------

<b>OSHA Permits</b>	<b>Satisfactory</b>
---------------------	---------------------

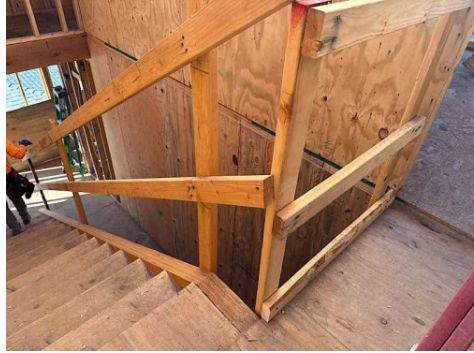
<b>Labor Law Postings</b>	<b>Satisfactory</b>
---------------------------	---------------------

<b>Emergency / Other Postings</b>	<b>Satisfactory</b>
-----------------------------------	---------------------

<b>First Aid / CPR Certification</b>	<b>Satisfactory</b>
--------------------------------------	---------------------

## Emergency Items

<b>Access / Egress</b>	<b>Satisfactory</b>
------------------------	---------------------

Comment	-
Good job providing stairs to the top floor.	

<b>Elevator for Hoisting Workers (if needed)</b>	<b>N/A</b>
--	------------

<b>Fire Extinguisher(s)</b>	<b>Satisfactory</b>
-----------------------------	---------------------

<b>First Aid Kit(s)</b>	<b>Satisfactory</b>
-------------------------	---------------------

<b>Comment</b>	-
----------------	---

A first aid kit is readily available for employees.



<b>Eye Wash Station</b>	<b>Satisfactory</b>
-------------------------	---------------------

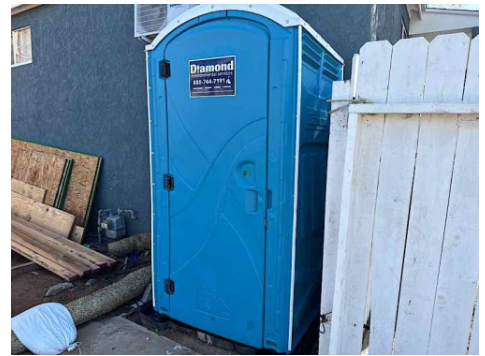
<b>Other Fire Fighting Equipment (If needed)</b>	<b>N/A</b>
--	------------

**General Items**

<b>Restrooms</b>	<b>Satisfactory</b>
------------------	---------------------

<b>Comment</b>	-
----------------	---

Please ensure the general contractor provided a hand washing station outside of the restroom.



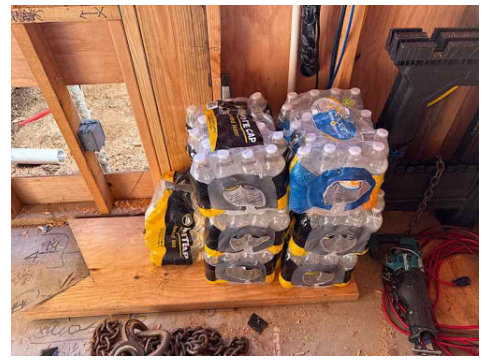
<b>Hand Washing Stations</b>	<b>Unsatisfactory</b>
------------------------------	-----------------------

<b>Waste Containers</b>	<b>Satisfactory</b>
-------------------------	---------------------

<b>Potable Water</b>	<b>Satisfactory</b>
----------------------	---------------------

<b>Comment</b>	-
----------------	---

Plenty of cool potable water is available for employees.



Shade

N/A

## Tools & Equipment

Power Tools

Satisfactory

Comment

-

Tools observed had the manufacturer's required safety elements present and unaltered.



Hand Tools

Satisfactory

Powder Actuated Tools

N/A

Pneumatic Nailers

Satisfactory

Mobile Elevated Work Platforms (MEWP's)

N/A

Powered Industrial Trucks

N/A

Heavy Mobile Equipment (Excavators, Loaders, etc)

N/A

Cranes


N/A

<b>Cylinder Storage</b>	<b>N/A</b>
-------------------------	------------

<b>Ladders</b>	<b>Satisfactory</b>
----------------	---------------------

**Operations**


<b>Personal Protective Equipment</b>	<b>Satisfactory</b>
--------------------------------------	---------------------

<b>Comment</b>	
Employees were observed wearing the required PPE, including ANSI rated safety glasses.	-
	

<b>Trenching &amp; Excavation</b>	<b>N/A</b>
-----------------------------------	------------

<b>Fall Protection</b>	<b>N/A</b>
------------------------	------------

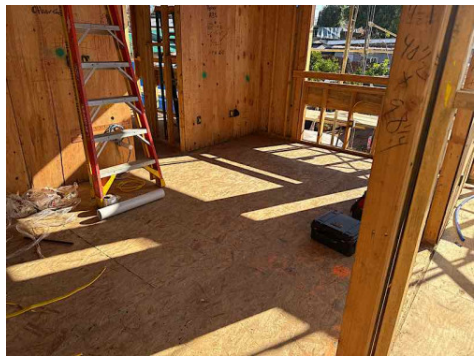
<b>Guardrails</b>	<b>Satisfactory</b>
-------------------	---------------------

<b>Comment</b>	
Good job providing guardrails and toeboards where required.	-
	

<b>Floor / Wall Openings</b>	<b>Satisfactory</b>
------------------------------	---------------------

<b>Supported Scaffolding</b>	<b>N/A</b>
------------------------------	------------



<b>Mobile Scaffolding</b>	<b>N/A</b>
<b>Suspended Scaffolding</b>	<b>N/A</b>
<b>Confined Spaces</b>	<b>N/A</b>
<b>Impalement Hazards</b>	<b>N/A</b>
<b>Traffic Control</b>	<b>N/A</b>
<b>Roofing Operations</b>	<b>N/A</b>
<b>Housekeeping</b>	<b>Satisfactory</b>
<b>Comment</b>	
Excellent work with housekeeping throughout the project.	-
	
<b>Demolition</b>	<b>N/A</b>
<b>Silica Control</b>	<b>N/A</b>
<b>Rigging Operations</b>	<b>N/A</b>
<b>Hot Work</b>	<b>N/A</b>
<b>Electrical Safety</b>	<b>Satisfactory</b>
<b>Lockout / Tagout</b>	<b>N/A</b>

<b>Stairways, Ramps, Runways</b>	<b>N/A</b>
----------------------------------	------------

<b>Other Items (that were observed)</b>	<b>N/A</b>
---	------------