

# SAFETY INSPECTION REPORT

**CONDUCTED FOR:**

Amcal

**PROJECT:**

Terra Campagna (Somis Phase II)



**INSPECTION TYPE:**

General Construction

**INSPECTOR :** JUSTYN BLANCHARD

**DATE :** AUGUST 12, 2024

**CITY :** CAMARILLO

**STATE :** CA

Safety Compliance Company is not responsible for unsafe conditions and situations not seen during this inspection. The items listed above represent only what was seen by the Safety Compliance Company Representative at the time of the inspection. Safety Compliance Company is not responsible for any ongoing unsafe condition(s) whether seen or unseen. In addition, Safety Compliance Company does not have the authority or authorization to approve, certify, or warranty any safety equipment or safety device. This agreement also indemnifies Safety Compliance Company of any omission, gross negligence, willful misconduct related to this report. Under Federal, State and Local Law, it is the responsibility of the employer and all subcontractors to mark all hazards with appropriate signs

# SUMMARY OF INSPECTION

<b>53</b> Items Inspected	<b>29</b> Satisfactory	<b>6</b> Unsatisfactory	<b>18</b> N/A
------------------------------	---------------------------	----------------------------	------------------

The site was reviewed for safe practices. This included observed tools, PPE, and practices. The site was reviewed with Scott.

**Documentation review:**

- COSP are posted in the trailer.
- Labor law posters are posted in the trailer.
- A map to the local hospital is posted in the trailer.
- A new first aid kit is in the trailer.
- Joe has posted his business card on the door of the job trailer.

Overall work on site is good. Joe and his team have been doing a good job with addressing issues on the spot. See observations below.

## INSPECTION ITEMS

Documentation	
<b>Site Contact</b>	<b>Satisfactory</b>
<b>Comment</b>	
Joe Egan	-
<b>Safety Program (Including IIPP)</b>	
<b>Satisfactory</b>	
<b>Comment</b>	
A safety manual is on site in GC trailer.	-
<b>Heat Illness Prevention Program</b>	
<b>Satisfactory</b>	
<b>Comment</b>	
In the IIPP.	-
<b>Safety Data Sheets</b>	
<b>Satisfactory</b>	

Comment	
SDS sheets are on site in GC office.	-

Daily Inspections	Satisfactory
Comment	
Daily inspections are being conducted.	-

Tailgate Meetings	Satisfactory
Comment	
These are being done weekly.	-

Sub-Contractor Meetings	Satisfactory
Comment	
Subcontractor meetings are being done weekly.	-

OSHA Permits	Satisfactory
Comment	
Trenching permits and notification of activity is on site.	-


Labor Law Postings	Satisfactory
Comment	
Labor law posters are posted in the trailer.	-

Emergency / Other Postings	Satisfactory
Comment	
Codes and emergency posters are posted in the trailer.	-

First Aid / CPR Certification	Satisfactory
-------------------------------	--------------

Emergency Items	
Access / Egress	Satisfactory

Elevator for Hoisting Workers (if needed)	N/A
---	-----

<b>Fire Extinguisher(s)</b>		<b>Unsatisfactory</b>
<b>Comment</b>		
There is no pin in the fire extinguisher. Building 27.		

<b>First Aid Kit(s)</b>		<b>Satisfactory</b>
<b>Comment</b>		
First aid kit is in the trailer.	-	

<b>Eye Wash Station</b>	<b>N/A</b>
-------------------------	------------

<b>Other Fire Fighting Equipment (If needed)</b>	<b>N/A</b>
--	------------

## General Items

<b>Restrooms</b>	<b>Satisfactory</b>
------------------	---------------------

<b>Hand Washing Stations</b>	<b>Satisfactory</b>
------------------------------	---------------------

<b>Waste Containers</b>	<b>Satisfactory</b>
-------------------------	---------------------

<b>Potable Water</b>	<b>Satisfactory</b>
----------------------	---------------------

<b>Shade</b>	<b>Satisfactory</b>
--------------	---------------------

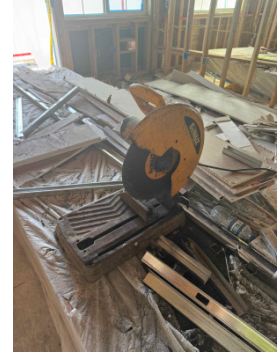
<b>Comment</b>		
Buildings provide shade.	-	

## Tools & Equipment

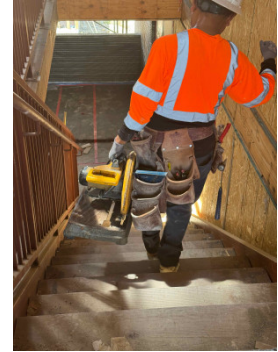
<b>Power Tools</b>	<b>Unsatisfactory</b>
--------------------	-----------------------

**Comment**

Cauldron employee had a chop saw with guard in place. Additionally, there should be a spark guard behind the saw to catch the sparks.



Removed on the spot.



**Hand Tools**

**Satisfactory**

**Powder Actuated Tools**

**N/A**

**Pneumatic Nailers**

**Satisfactory**

**Mobile Elevated Work Platforms (MEWP's)**

**Satisfactory**

**Powered Industrial Trucks**

**Satisfactory**

**Heavy Mobile Equipment (Excavators, Loaders, etc)**

**Satisfactory**

**Cranes**

**N/A**



**Cylinder Storage**

**N/A**

**Ladders**

**Unsatisfactory**

**Comment**

<p>Larrabure framing has 2 ladders set up with a plank in between them. This can not be done. Ant platforms need at least 2 planks.</p>	
<p>Taping and drywalling was seen being done safely. Good job.</p>	

**Operations**

**Personal Protective Equipment** **Unsatisfactory**

**Comment**

<p>Drywaller was seen not wearing a hard hat. This was discussed with Scott to be addressed.</p>	
--	---

**Trenching & Excavation** **N/A**

**Fall Protection** **Satisfactory**



**Guardrails** **Satisfactory**

**Comment**

<p>Good job with railing at all wall openings are balconies.</p>	<p style="text-align: center;">-</p>
--	--------------------------------------

<b>Floor / Wall Openings</b>	<b>Satisfactory</b>
------------------------------	---------------------

<b>Supported Scaffolding</b>	<b>Unsatisfactory</b>
------------------------------	-----------------------

<b>Comment</b>	
Building 27 - Stucco was recently set and corrections need to be made to the scaffolding. Toe boards need to be placed above exit/entry ways.	
Debris will be cleaned up.	

<b>Mobile Scaffolding</b>	<b>N/A</b>
---------------------------	------------

<b>Suspended Scaffolding</b>	<b>N/A</b>
------------------------------	------------

<b>Confined Spaces</b>	<b>N/A</b>
------------------------	------------

<b>Impalement Hazards</b>	<b>Satisfactory</b>
---------------------------	---------------------

<b>Comment</b>	
Impalement hazards are capped throughout the site.	-

<b>Traffic Control</b>	<b>N/A</b>
------------------------	------------

<b>Roofing Operations</b>	<b>N/A</b>
---------------------------	------------

<b>Housekeeping</b>	<b>Satisfactory</b>
---------------------	---------------------

Comment	
Housekeeping is good throughout the site.	-


<b>Demolition</b>	<b>N/A</b>
-------------------	------------

<b>Silica Control</b>	<b>N/A</b>
-----------------------	------------

<b>Rigging Operations</b>	<b>N/A</b>
---------------------------	------------

<b>Hot Work</b>	<b>N/A</b>
-----------------	------------

<b>Electrical Safety</b>	<b>Unsatisfactory</b>
--------------------------	-----------------------

Comment	
240V cable is damaged and needs to be replaced. Next to the building 25. This is being fixed on the spot.	

<b>Lockout / Tagout</b>	<b>N/A</b>
-------------------------	------------

<b>Stairways, Ramps, Runways</b>	<b>Satisfactory</b>
----------------------------------	---------------------

<b>Other Items (that were observed)</b>	<b>N/A</b>
---	------------