

SAFETY INSPECTION REPORT

CONDUCTED FOR:
Baldwin Construction

PROJECT:
17th Street



INSPECTION TYPE:
General Construction

INSPECTOR : JEREMY CHAVEZ
DATE : DECEMBER 04, 2024
CITY : MANHATTAN BEACH
STATE : CA

Safety Compliance Company is not responsible for unsafe conditions and situations not seen during this inspection. The items listed above represent only what was seen by the Safety Compliance Company Representative at the time of the inspection. Safety Compliance Company is not responsible for any ongoing unsafe condition(s) whether seen or unseen. In addition, Safety Compliance Company does not have the authority or authorization to approve, certify, or warranty any safety equipment or safety device. This agreement also indemnifies Safety Compliance Company of any omission, gross negligence, willful misconduct related to this report. Under Federal, State and Local Law, it is the responsibility of the employer and all subcontractors to mark all hazards with appropriate signs

SUMMARY OF INSPECTION

53 Items Inspected	18 Satisfactory	7 Unsatisfactory	28 N/A
------------------------------	---------------------------	----------------------------	------------------

INSPECTION ITEMS

Documentation	
Site Contact	Satisfactory
Comment	
I reviewed the site with Frank Sezate.	-
Safety Program (Including IIPP)	Satisfactory
Heat Illness Prevention Program	Satisfactory
Safety Data Sheets	N/A
Daily Inspections	N/A
Tailgate Meetings	N/A
Sub-Contractor Meetings	N/A
OSHA Permits	N/A
Labor Law Postings	Satisfactory
Emergency / Other Postings	Unsatisfactory
Comment	

It appears that the map to the nearest medical facility and the evacuation route have fallen off. The superintendent will ensure these are reposted.



First Aid / CPR Certification

N/A

Emergency Items

Access / Egress

Satisfactory

Elevator for Hoisting Workers (if needed)

N/A

Fire Extinguisher(s)

Satisfactory

First Aid Kit(s)

Satisfactory

Eye Wash Station

Satisfactory

Other Fire Fighting Equipment (If needed)

N/A

General Items

Restrooms

Satisfactory

Comment


The restrooms and hand washing stations appeared to be maintained in a sanitary condition.



Hand Washing Stations	Satisfactory
Waste Containers	Satisfactory
Potable Water	Satisfactory
Shade	N/A

Tools & Equipment

Power Tools	Unsatisfactory
--------------------	-----------------------

Comment	
<p>A table saw does not have its guard equipped. Please ensure tools have the manufacturer safety elements present and unaltered.</p>	

Hand Tools	Satisfactory
-------------------	---------------------

Powder Actuated Tools	N/A
------------------------------	------------

Pneumatic Nailers	N/A
--------------------------	------------

Mobile Elevated Work Platforms (MEWP's)	N/A
--	------------

Powered Industrial Trucks	N/A
----------------------------------	------------

Heavy Mobile Equipment (Excavators, Loaders, etc)	N/A
--	------------

Cranes	N/A
---------------	------------

Cylinder Storage	N/A
-------------------------	------------

Ladders	Unsatisfactory
----------------	-----------------------

Comment	
----------------	--

An employee is standing on the top step of an A-frame ladder, which is prohibited. Please ensure employees use the approved steps. In the example pictured a taller ladder may be required.



Operations	
-------------------	--

Personal Protective Equipment	Unsatisfactory
--------------------------------------	-----------------------

Comment	
----------------	--

An employee is using a circular saw while not wearing safety glasses. Please ensure employees wear the required PPE, which includes safety glasses.



Trenching & Excavation	N/A
-----------------------------------	------------

Fall Protection	N/A
------------------------	------------

Guardrails	N/A
-------------------	------------

Floor / Wall Openings	Satisfactory
------------------------------	---------------------

Supported Scaffolding	Unsatisfactory
------------------------------	-----------------------

Comment	
----------------	--

There is a section of scaffolding that is missing guard rails. The scaffolding contractor was reported to be on site and will be directed to make the needed corrections.



Mobile Scaffolding

Unsatisfactory

Comment

Please ensure mobile scaffolds are fully planked on the level that will be used. Additionally, a cat corner brace is required. Please note that the scaffold was not in use during the inspection.



Suspended Scaffolding

N/A

Confined Spaces

Unsatisfactory

Comment

Soffits and crawlspaces are deemed confined spaces. Please ensure employees entering confined spaces have confined space training.



Impalement Hazards

Satisfactory

Comment

Good job providing implement protection where required.



Traffic Control

N/A

Roofing Operations

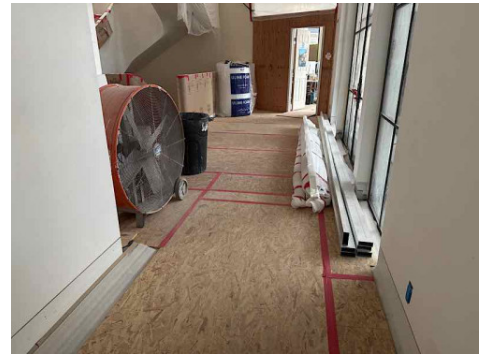
N/A

Housekeeping

Satisfactory

Comment

Overall housekeeping is well maintained. Good job.



Demolition

N/A

Silica Control

N/A

Rigging Operations

N/A

Hot Work

N/A

Electrical Safety

Satisfactory

Lockout / Tagout

N/A

Stairways, Ramps, Runways

Satisfactory

Other Items (that were observed)	N/A
---	------------