

# SAFETY INSPECTION REPORT

**CONDUCTED FOR:**  
Baldwin Construction

**PROJECT:**  
31st Street



**INSPECTION TYPE:**  
General Construction

**INSPECTOR:** JEREMY CHAVEZ  
**DATE:** FEBRUARY 25, 2025  
**CITY:** HERMOSA BEACH  
**STATE:** CA  
**SITE CONTACT:** SCOTT ATKINSON  
**ADDITIONAL SITE CONTACT:** N/A

Safety Compliance Company is not responsible for unsafe conditions and situations not seen during this inspection. The items listed above represent only what was seen by the Safety Compliance Company Representative at the time of the inspection. Safety Compliance Company is not responsible for any ongoing unsafe condition(s) whether seen or unseen. In addition, Safety Compliance Company does not have the authority or authorization to approve, certify, or warranty any safety equipment or safety device. This agreement also indemnifies Safety Compliance Company of any omission, gross negligence, willful misconduct related to this report. Under Federal, State and Local Law, it is the responsibility of the employer and all subcontractors to mark all hazards with appropriate signs

# SUMMARY OF INSPECTION

<b>52</b> Items Inspected	<b>21</b> Satisfactory	<b>2</b> Unsatisfactory	<b>29</b> N/A
------------------------------	---------------------------	----------------------------	------------------

The project was reviewed with the superintendent. He had to go into a meeting and was unable to provide a copy of the daily jobsite inspection or a recent tailgate meeting. Workplace conditions and job site practices were observed during the inspection.

# INSPECTION ITEMS

Documentation	
<b>Safety Program (Including IIPP)</b>	<b>Satisfactory</b>
<b>Heat Illness Prevention Program</b>	<b>Satisfactory</b>
<b>Safety Data Sheets</b>	<b>Satisfactory</b>
<b>Daily Inspections</b>	<b>N/A</b>
<b>Tailgate Meetings</b>	<b>N/A</b>
<b>Sub-Contractor Meetings</b>	<b>N/A</b>
<b>OSHA Permits</b>	<b>N/A</b>
<b>Labor Law Postings</b>	<b>Satisfactory</b>
<b>Comment</b>	-

Labor law postings are in place as required.



**Emergency / Other Postings**

**Satisfactory**

**Comment**

-

Emergency posters are on site and directions to nearest medical facility are posted.



**First Aid / CPR Certification**

**N/A**

**Emergency Items**

**Access / Egress**

**Satisfactory**

**Elevator for Hoisting Workers (if needed)**

**N/A**

**Fire Extinguisher(s)**

**Satisfactory**

**Comment**

-

Good job providing fire extinguishers for the project. Fire extinguishers have their monthly inspection completed.



**First Aid Kit(s)**

**Satisfactory**

**Eye Wash Station**

**Satisfactory**

**Other Fire Fighting Equipment (If needed)**

**N/A**

**General Items**

**Restrooms**

**Satisfactory**

**Comment**

-

The restroom appeared to be maintained in a sanitary condition.



**Hand Washing Stations**

**Satisfactory**

**Waste Containers**

**Satisfactory**

**Potable Water**

**Satisfactory**

**Shade**

**N/A**

## Tools & Equipment

**Power Tools** **Satisfactory**

**Hand Tools** **Satisfactory**

**Powder Actuated Tools** **N/A**

**Pneumatic Nailers** **N/A**

**Mobile Elevated Work Platforms (MEWP's)** **N/A**

**Powered Industrial Trucks** **N/A**

**Heavy Mobile Equipment (Excavators, Loaders, etc)** **N/A**

**Cranes** **N/A**

**Cylinder Storage** **N/A**

**Ladders** **Satisfactory**

**Comment**

-

Safe work practices were observed while using ladders.



## Operations

**Personal Protective Equipment** **Satisfactory**

**Trenching & Excavation** **N/A**


<b>Fall Protection</b>	<b>N/A</b>
------------------------	------------

<b>Guardrails</b>	<b>Satisfactory</b>
-------------------	---------------------

<b>Floor / Wall Openings</b>	<b>Satisfactory</b>
------------------------------	---------------------

<b>Supported Scaffolding</b>	<b>N/A</b>
------------------------------	------------

<b>Mobile Scaffolding</b>	<b>Unsatisfactory</b>
---------------------------	-----------------------

<b>Comment</b>	
<p>A mobile scaffold is lacking the required cross braces, cat-a-corner brace, planks, access ladder, and tag. The superintendent reported the scaffold is not in use or approved for use. Please install a red tag and indicate the scaffold is not approved for use.</p>	<p>-</p> 

<b>Suspended Scaffolding</b>	<b>N/A</b>
------------------------------	------------

<b>Confined Spaces</b>	<b>N/A</b>
------------------------	------------

<b>Impalement Hazards</b>	<b>N/A</b>
---------------------------	------------

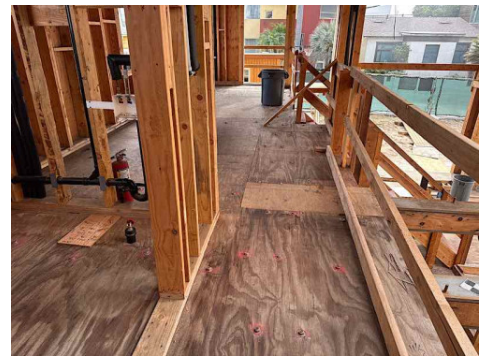
<b>Traffic Control</b>	<b>N/A</b>
------------------------	------------

<b>Roofing Operations</b>	<b>N/A</b>
---------------------------	------------

<b>Housekeeping</b>	<b>Satisfactory</b>
---------------------	---------------------

<b>Comment</b>	
	-

Good job with housekeeping.



<b>Demolition</b>	<b>N/A</b>
-------------------	------------

<b>Silica Control</b>	<b>N/A</b>
-----------------------	------------

<b>Rigging Operations</b>	<b>N/A</b>
---------------------------	------------

<b>Hot Work</b>	<b>N/A</b>
-----------------	------------

<b>Electrical Safety</b>	<b>Satisfactory</b>
--------------------------	---------------------

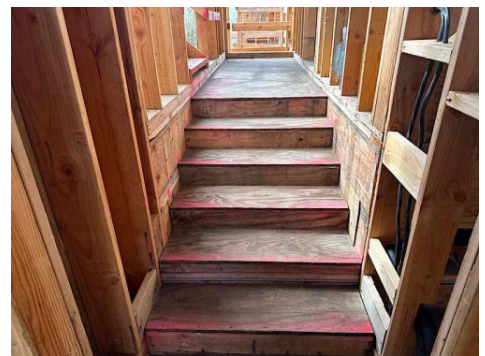
<b>Lockout / Tagout</b>	<b>N/A</b>
-------------------------	------------

<b>Stairways, Ramps, Runways</b>	<b>Unsatisfactory</b>
----------------------------------	-----------------------

**Comment**

-

Please ensure stairs with 4 or more risers have at least one handrail installed.



<b>Other Items (that were observed)</b>	<b>N/A</b>
---	------------