

SAFETY INSPECTION REPORT

CONDUCTED FOR:
Baldwin Construction

PROJECT:
The Strand



INSPECTION TYPE:
General Construction

INSPECTOR: JEREMY CHAVEZ
DATE: FEBRUARY 25, 2025
CITY: MANHATTAN BEACH
STATE: CA
SITE CONTACT: N/A
ADDITIONAL SITE CONTACT: N/A

Safety Compliance Company is not responsible for unsafe conditions and situations not seen during this inspection. The items listed above represent only what was seen by the Safety Compliance Company Representative at the time of the inspection. Safety Compliance Company is not responsible for any ongoing unsafe condition(s) whether seen or unseen. In addition, Safety Compliance Company does not have the authority or authorization to approve, certify, or warranty any safety equipment or safety device. This agreement also indemnifies Safety Compliance Company of any omission, gross negligence, willful misconduct related to this report. Under Federal, State and Local Law, it is the responsibility of the employer and all subcontractors to mark all hazards with appropriate signs

SUMMARY OF INSPECTION

52 Items Inspected	18 Satisfactory	2 Unsatisfactory	32 N/A
------------------------------	---------------------------	----------------------------	------------------

The superintendent was not on site. The project and contractors on site were reviewed for safe work practices and site conditions.

INSPECTION ITEMS

Documentation	
Safety Program (Including IIPP)	N/A
Heat Illness Prevention Program	N/A
Safety Data Sheets	N/A
Daily Inspections	N/A
Tailgate Meetings	N/A
Sub-Contractor Meetings	N/A
OSHA Permits	N/A
Labor Law Postings	Satisfactory
Comment	-

Labor law postings are in place as required.



Emergency / Other Postings

Satisfactory

First Aid / CPR Certification

N/A

Emergency Items

Access / Egress

Satisfactory

Elevator for Hoisting Workers (if needed)

N/A

Fire Extinguisher(s)

Satisfactory

Comment

-

Fire extinguishers are located throughout the project and have been inspected.



First Aid Kit(s)

Satisfactory

Eye Wash Station

Satisfactory

Other Fire Fighting Equipment (If needed)

N/A

General Items

Restrooms

Satisfactory

Comment

The restroom and handwashing station appeared to be maintained in a sanitary condition.



Hand Washing Stations

Satisfactory

Waste Containers

Satisfactory

Potable Water

Satisfactory

Shade

N/A

Tools & Equipment

Power Tools

Satisfactory

Hand Tools

Satisfactory

Powder Actuated Tools

N/A

Pneumatic Nailers

N/A

Mobile Elevated Work Platforms (MEWP's)

N/A

Powered Industrial Trucks

N/A

Heavy Mobile Equipment (Excavators, Loaders, etc)

N/A

Cranes	N/A
---------------	------------

Cylinder Storage	N/A
-------------------------	------------

Ladders	Satisfactory
----------------	---------------------

Operations

Personal Protective Equipment	Satisfactory
--------------------------------------	---------------------

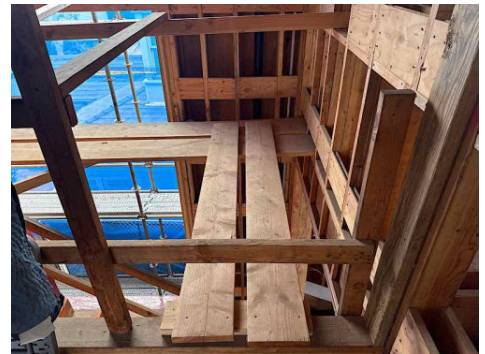
Trenching & Excavation	N/A
-----------------------------------	------------

Fall Protection	N/A
------------------------	------------

Guardrails	Unsatisfactory
-------------------	-----------------------

Comment	-
----------------	---

A top rail has been removed where required. Please ensure guardrails are reinstalled.



Floor / Wall Openings	Satisfactory
------------------------------	---------------------

Supported Scaffolding	Unsatisfactory
------------------------------	-----------------------

Comment	-
----------------	---

The guardrails on the structure side of the scaffold have been removed in an area where they are required. Please ensure they are reinstalled.



Mobile Scaffolding	N/A
---------------------------	------------

Suspended Scaffolding	N/A
------------------------------	------------

Confined Spaces	N/A
------------------------	------------

Impalement Hazards	N/A
---------------------------	------------

Traffic Control	N/A
------------------------	------------

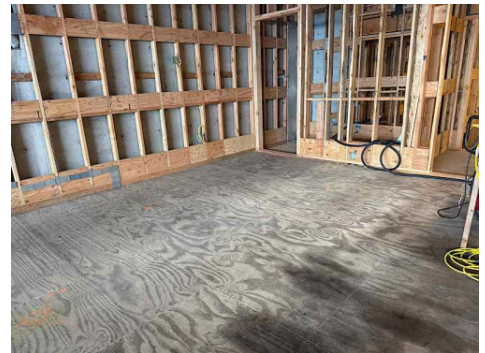
Roofing Operations	N/A
---------------------------	------------

Housekeeping	Satisfactory
---------------------	---------------------

Comment

-

Housekeeping is well-maintained throughout the project.



Demolition	N/A
-------------------	------------

Silica Control	N/A
-----------------------	------------

Rigging Operations	N/A
Hot Work	N/A
Electrical Safety	Satisfactory
Lockout / Tagout	N/A
Stairways, Ramps, Runways	Satisfactory
Other Items (that were observed)	N/A