

SAFETY INSPECTION REPORT

CONDUCTED FOR:
CalPac Sheet Metal

PROJECT:
Glassell Park



INSPECTION TYPE:
General Construction

INSPECTOR : JUSTYN BLANCHARD
DATE : JANUARY 16, 2025
CITY : LOS ANGELES
STATE : CA

Safety Compliance Company is not responsible for unsafe conditions and situations not seen during this inspection. The items listed above represent only what was seen by the Safety Compliance Company Representative at the time of the inspection. Safety Compliance Company is not responsible for any ongoing unsafe condition(s) whether seen or unseen. In addition, Safety Compliance Company does not have the authority or authorization to approve, certify, or warranty any safety equipment or safety device. This agreement also indemnifies Safety Compliance Company of any omission, gross negligence, willful misconduct related to this report. Under Federal, State and Local Law, it is the responsibility of the employer and all subcontractors to mark all hazards with appropriate signs

SUMMARY OF INSPECTION

53 Items Inspected	14 Satisfactory	9 Unsatisfactory	30 N/A
------------------------------	---------------------------	----------------------------	------------------

A safety inspection was conducted today on behalf of CalPac. I was able to review all aspects of the job and it was discussed with Francisco Carlos.

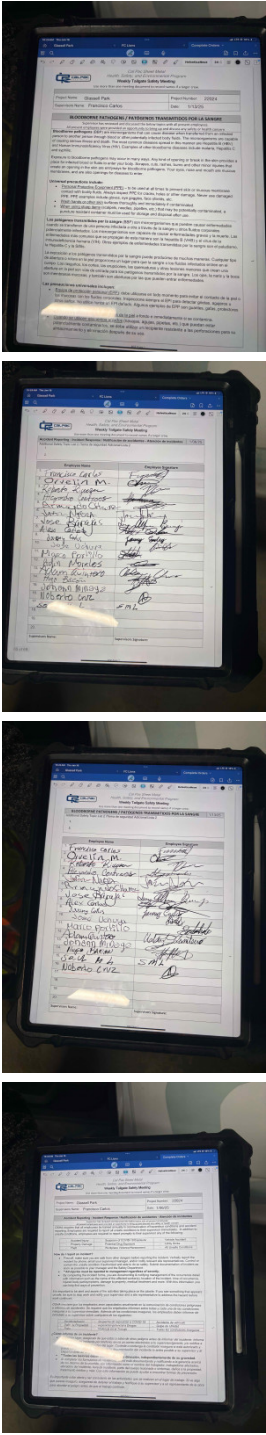
The work being performed today was on multiple boom lifts installing the metal siding on the building. It was discussed with Francisco that the work site needs to be delineated so there is no traffic, foot traffic, or anyone underneath the boom lifts. See photo under MEWP for manufacturer's instructions. This needs to be coordinated with the GC as this is the only entrance and exit.

Please see observations below:

INSPECTION ITEMS

Documentation	
Site Contact	Satisfactory
Comment	-
Francisco Carlos	-
Safety Program (Including IIPP)	Unsatisfactory
Comment	-
IIPP needs to be accessible.	-
Heat Illness Prevention Program	Unsatisfactory
Comment	-
Heat illness program needs to be accessible.	-
Safety Data Sheets	Unsatisfactory
Comment	-
Please ensure that safety data sheets are kept on file.	-

Daily Inspections		Unsatisfactory
Comment		-
Please ensure that documented daily inspections are kept on file.		-

Tailgate Meetings		Satisfactory
Comment		-
Meetings are being held weekly and documented well.	 <p>The images show a tablet displaying a document in Spanish, likely a safety or inspection protocol, and a meeting agenda with handwritten notes and signatures. The document includes sections for 'OBJETIVO', 'ALCANCE', 'RESPONSABLES', and 'PROCEDIMIENTO'. The agenda lists dates from 1/13 to 1/17 with names and initials.</p>	

Sub-Contractor Meetings	N/A
--------------------------------	------------

OSHA Permits	N/A
---------------------	------------

Labor Law Postings	Unsatisfactory
Comment	-
There are no labor law posters for Cal-Pac.	-


Emergency / Other Postings	Unsatisfactory
Comment	-
Maps to the local hospitals are needed.	-

First Aid / CPR Certification	Unsatisfactory
Comment	-
There needs to be at least one employee on site who is CPR/First Aid certified.	-

Emergency Items

Access / Egress	Satisfactory
------------------------	---------------------

Elevator for Hoisting Workers (if needed)	N/A
--	------------

Fire Extinguisher(s)	Unsatisfactory
Comment	-
Please ensure that there is a fire extinguisher next to where metal is being cut	

First Aid Kit(s)	Satisfactory
-------------------------	---------------------

Comment	-
First aid kit is on site.	-

Eye Wash Station	N/A
-------------------------	------------

Other Fire Fighting Equipment (If needed)	N/A
--	------------

General Items

Restrooms	Satisfactory
------------------	---------------------

Comment	-
Restrooms on site provided by the GC.	-

Hand Washing Stations	Satisfactory
------------------------------	---------------------

Waste Containers	Satisfactory
-------------------------	---------------------


Potable Water	Satisfactory
----------------------	---------------------

Shade	Satisfactory
--------------	---------------------

Comment	-
Building provides shade.	-

Tools & Equipment

Power Tools	Satisfactory
--------------------	---------------------

Comment	-
Please ensure that all grinders have guards. Same goes for all power tools.	

Hand Tools	N/A
Powder Actuated Tools	N/A
Pneumatic Nailers	N/A
Mobile Elevated Work Plarforms (MEWP's)	Unsatisfactory
Comment	-

Photo 1: Please delineate work site so there is no traffic, foot traffic, or anyone underneath the boom lifts. See photo 2 for manufacturer's instructions. This needs to be coordinated with the GC as this is the only entrance and exit.

Photo 3 and 4: Great job tying off to and operating the boom lifts.



1-8

1-8

3128791

SECTION 1 - SAFETY PRECAUTIONS

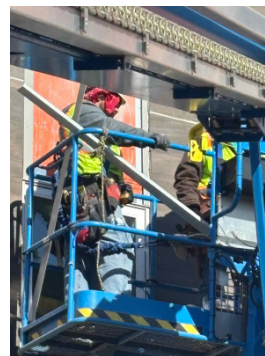
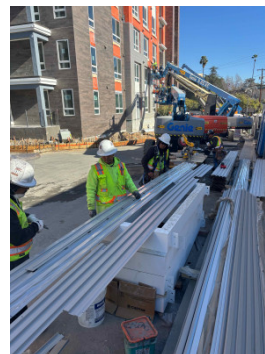
- Be aware of stopping distances in all drive speeds. When driving in high speed, slow down the machine using the controller before stopping.
- Do not use high speed drive in restricted or close quarters or when driving in reverse.
- Under all travel conditions, the operator must limit travel speed according to conditions of ground surface, congestion, visibility, slope, location of personnel, and other factors causing hazards of collision or injury to personnel.
- Exercise extreme caution at all times to prevent obstacles from sinking or interfering with operating controls and persons in the platform.
- Be sure that operators of other overhead and floor level machines are aware of the aerial work platform's presence. Disconnect power to overhead cranes.
- Warn personnel not to work, stand, or walk under a raised boom or platform. Position barricades on floor if necessary.

1.4 LIFTING, AND HAULING

- Never allow personnel in platform while lifting or hauling the machine.
- Ensure boom is in the stowed position prior to lifting or hauling. The platform must be completely empty.
- When lifting machine, lift only at designated areas of the machine. Lift the unit with equipment of adequate capacity.
- Refer to the Machine Operation section of this manual for lifting information.

1.5 ADDITIONAL HAZARDS / SAFETY

- Do not use machine as a ground for welding.
- When performing welding or metal cutting operations, precautions must be taken to protect the chassis from direct exposure to weld and metal cutting spatter.
- Do not refuel the machine with the engine running.
- Battery fluid is highly corrosive. Avoid contact with



Powered Industrial Trucks	N/A
Heavy Mobile Equipment (Excavators, Loaders, etc)	N/A
Cranes	N/A

Cylinder Storage	N/A
-------------------------	------------

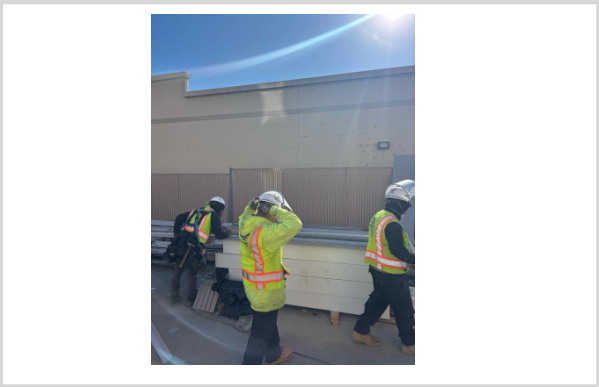
Ladders	N/A
----------------	------------

Operations

Personal Protective Equipment	Satisfactory
--------------------------------------	---------------------

Comment	-
----------------	---

Good job with PPE from the crew here. Gloves are being used when handling sheet metal. Crew is using a face shield and eye protection when cutting metal.

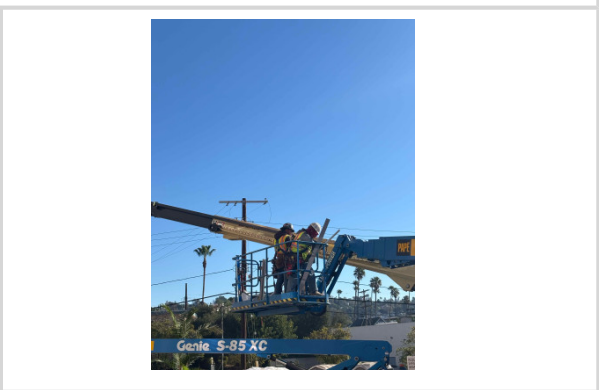


Trenching & Excavation	N/A
-----------------------------------	------------

Fall Protection	Satisfactory
------------------------	---------------------

Comment	-
----------------	---


Employees are wearing fall protection in the boom lifts.



Guardrails	N/A
-------------------	------------

Floor / Wall Openings	N/A
------------------------------	------------

Supported Scaffolding	N/A
------------------------------	------------

Mobile Scaffolding	N/A
Suspended Scaffolding	N/A
Confined Spaces	N/A
Impalement Hazards	N/A
Traffic Control	N/A
Roofing Operations	N/A
Housekeeping	Satisfactory
Comment	-
Great job with housekeeping throughout the work area.	
Demolition	N/A
Silica Control	N/A
Rigging Operations	N/A
Hot Work	N/A
Electrical Safety	Satisfactory
Lockout / Tagout	N/A

Stairways, Ramps, Runways	N/A
----------------------------------	------------

Other Items (that were observed)	N/A
---	------------