

SAFETY INSPECTION REPORT

CONDUCTED FOR:
CalPac Sheet Metal

PROJECT:
Glassell Park



INSPECTION TYPE:
General Construction

INSPECTOR : JUSTYN BLANCHARD
DATE : JANUARY 16, 2025
CITY : LOS ANGELES
STATE : CA

Safety Compliance Company is not responsible for unsafe conditions and situations not seen during this inspection. The items listed above represent only what was seen by the Safety Compliance Company Representative at the time of the inspection. Safety Compliance Company is not responsible for any ongoing unsafe condition(s) whether seen or unseen. In addition, Safety Compliance Company does not have the authority or authorization to approve, certify, or warranty any safety equipment or safety device. This agreement also indemnifies Safety Compliance Company of any omission, gross negligence, willful misconduct related to this report. Under Federal, State and Local Law, it is the responsibility of the employer and all subcontractors to mark all hazards with appropriate signs

SUMMARY OF INSPECTION

53 Items Inspected	14 Satisfactory	8 Unsatisfactory	31 N/A
------------------------------	---------------------------	----------------------------	------------------

A safety inspection was conducted today on behalf of CalPac. I was able to review all aspects of the job.

While i was not able to view the employees working as they were on the lunch break, I was able to observe the areas where they are working and look for any hazards. Work is being done on the roof and also the balconies. The roof has a parapet wall taller than 42" and the balconies have railing installed.

Please see observations below:

INSPECTION ITEMS

Documentation	
Site Contact	Satisfactory
Comment	-
Adolfo Meza	-
Safety Program (Including IIPP)	Unsatisfactory
Comment	-
Safety program needs to be on site.	-
Heat Illness Prevention Program	Unsatisfactory
Comment	-
Heat illness program needs to be on site.	-
Safety Data Sheets	Unsatisfactory
Comment	-
Please ensure that safety data sheets are kept on file.	-
Daily Inspections	Unsatisfactory

Comment	-
Please ensure that documented daily inspections are kept on file.	-

Tailgate Meetings	Unsatisfactory
Comment	-
Confirm that tailgate meetings are being conducted.	-

Sub-Contractor Meetings	N/A
--------------------------------	------------

OSHA Permits	N/A
---------------------	------------

Labor Law Postings	Unsatisfactory
Comment	-
There are no labor law posters for CalPac.	-

Emergency / Other Postings	Unsatisfactory
Comment	-
Maps to the local hospitals are needed.	-

First Aid / CPR Certification	Unsatisfactory
Comment	-
There needs to be at least one employee on site who is CPR/First Aid certified.	-

Emergency Items

Access / Egress	Satisfactory
------------------------	---------------------

Elevator for Hoisting Workers (if needed)	N/A
--	------------

Fire Extinguisher(s)	Satisfactory
Comment	-
Job site fire extinguishers are available.	-

First Aid Kit(s)	Satisfactory
-------------------------	---------------------

Comment	-
First aid kit is on site.	-

Eye Wash Station	N/A
-------------------------	------------

Other Fire Fighting Equipment (If needed)	N/A
--	------------

General Items

Restrooms	Satisfactory
------------------	---------------------

Comment	-
Restrooms on site provided by the GC.	-

Hand Washing Stations	Satisfactory
------------------------------	---------------------

Waste Containers	Satisfactory
-------------------------	---------------------

Potable Water	Satisfactory
----------------------	---------------------

Comment	-
Water is on site for Cal-Pac	-

Shade	Satisfactory
--------------	---------------------

Comment	-
Building provides shade.	-

Tools & Equipment

Power Tools	N/A
--------------------	------------

Hand Tools	Satisfactory
-------------------	---------------------

Comment	-
----------------	---

Hand tools were seen to be in good condition.



Powder Actuated Tools	N/A
------------------------------	------------

Pneumatic Nailers	N/A
--------------------------	------------

Mobile Elevated Work Platforms (MEWP's)	N/A
--	------------

Powered Industrial Trucks	N/A
----------------------------------	------------

Heavy Mobile Equipment (Excavators, Loaders, etc)	N/A
--	------------

Cranes	N/A
---------------	------------

Cylinder Storage	N/A
-------------------------	------------

Ladders	N/A
----------------	------------

Operations

Personal Protective Equipment	N/A
--------------------------------------	------------

Comment	
Employees were on lunch at the time of the visit.	-

Trenching & Excavation	N/A
-----------------------------------	------------

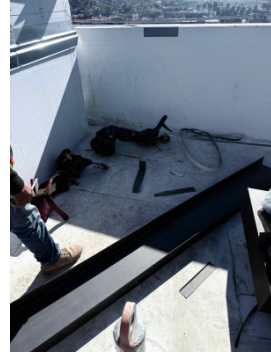
Fall Protection	N/A
------------------------	------------

Guardrails	Satisfactory
-------------------	---------------------

Comment

-

Work is being done installing the metal siding on the rail on the wall. Parapet wall is greater 42" tall. Employees are not exposed to a fall hazard here. Employees can also access the scaffolding and use the scaffolding on the outside of the wall. Photo #2 there is also work being done on balconies installing the metal siding on the bottom part of the balcony is being installed. Railing is installed so employees do not have a fall hazard.



Floor / Wall Openings

N/A

Supported Scaffolding

Satisfactory

Comment

-

Employees can use the scaffolding set up by the GC.

-

Mobile Scaffolding

N/A

Suspended Scaffolding

N/A

Confined Spaces

N/A

Impalement Hazards

N/A

Traffic Control

N/A

Roofing Operations

N/A

Housekeeping		Satisfactory
Comment		-
The work areas for CalPac are well kept.		-
Demolition		N/A
Silica Control		N/A
Rigging Operations		N/A
Hot Work		N/A
Electrical Safety		Satisfactory
Comment		-
Electrical cables seen are in good condition.		-
Lockout / Tagout		N/A
Stairways, Ramps, Runways		N/A
Other Items (that were observed)		N/A