

# SAFETY INSPECTION REPORT

**CONDUCTED FOR:**  
Chesmar Homes Austin

**PROJECT:**  
Water Oak



**INSPECTION TYPE:**  
General Construction

**INSPECTOR :** DAN MOWERY  
**DATE :** JULY 29, 2024  
**CITY :** GEORGETOWN  
**STATE :** TEXAS

Safety Compliance Company is not responsible for unsafe conditions and situations not seen during this inspection. The items listed above represent only what was seen by the Safety Compliance Company Representative at the time of the inspection. Safety Compliance Company is not responsible for any ongoing unsafe condition(s) whether seen or unseen. In addition, Safety Compliance Company does not have the authority or authorization to approve, certify, or warranty any safety equipment or safety device. This agreement also indemnifies Safety Compliance Company of any omission, gross negligence, willful misconduct related to this report. Under Federal, State and Local Law, it is the responsibility of the employer and all subcontractors to mark all hazards with appropriate signs

# SUMMARY OF INSPECTION

<b>53</b> Items Inspected	<b>18</b> Satisfactory	<b>5</b> Unsatisfactory	<b>30</b> N/A
------------------------------	---------------------------	----------------------------	------------------

Met with the superintendent and then walked the job site. Scaffolding had a lot of issues, will be noted in pictures. Fall protection wasn't being worn. Ladders are being used. And there were some openings on the second floor that need a rail going across the open, for fall protection. No safety glasses were being used.

Housekeeping looked really good. There is a picture of a worker cleaning the street. Great job.

I did notice J & D sheet metal and roofing truck was on site. That was the only vehicle with any marking on it.

# INSPECTION ITEMS

## Documentation

<b>Site Contact</b>	<b>Satisfactory</b>
<b>Safety Program (Including IIPP)</b>	<b>Satisfactory</b>
<b>Heat Illness Prevention Program</b>	<b>N/A</b>
<b>Safety Data Sheets</b>	<b>Satisfactory</b>
<b>Daily Inspections</b>	<b>N/A</b>
<b>Tailgate Meetings</b>	<b>N/A</b>
<b>Sub-Contractor Meetings</b>	<b>N/A</b>
<b>OSHA Permits</b>	<b>Satisfactory</b>
<b>Labor Law Postings</b>	<b>Satisfactory</b>

<b>Emergency / Other Postings</b>	<b>Satisfactory</b>
-----------------------------------	---------------------

<b>First Aid / CPR Certification</b>	<b>Satisfactory</b>
--------------------------------------	---------------------

### Emergency Items

<b>Access / Egress</b>	<b>N/A</b>
------------------------	------------

<b>Elevator for Hoisting Workers (if needed)</b>	<b>N/A</b>
--	------------

<b>Fire Extinguisher(s)</b>	<b>Satisfactory</b>
-----------------------------	---------------------

<b>First Aid Kit(s)</b>	<b>Satisfactory</b>
-------------------------	---------------------

<b>Eye Wash Station</b>	<b>Satisfactory</b>
-------------------------	---------------------

<b>Other Fire Fighting Equipment (If needed)</b>	<b>N/A</b>
--	------------

### General Items

<b>Restrooms</b>	<b>Satisfactory</b>
------------------	---------------------

<b>Hand Washing Stations</b>	<b>Satisfactory</b>
------------------------------	---------------------

<b>Waste Containers</b>	<b>Satisfactory</b>
-------------------------	---------------------

<b>Potable Water</b>	<b>N/A</b>
----------------------	------------

<b>Shade</b>	<b>N/A</b>
--------------	------------

### Tools & Equipment

<b>Power Tools</b>	<b>Satisfactory</b>
--------------------	---------------------

<b>Comment</b>	
I'll power tools were being used in a safely manner.	-

<b>Hand Tools</b>	<b>Satisfactory</b>
-------------------	---------------------

<b>Powder Actuated Tools</b>	<b>N/A</b>
------------------------------	------------

<b>Pneumatic Nailers</b>	<b>Satisfactory</b>
--------------------------	---------------------

<b>Comment</b>	
Nailer was working fine	

<b>Mobile Elevated Work Platforms (MEWP's)</b>	<b>N/A</b>
--	------------


<b>Powered Industrial Trucks</b>	<b>N/A</b>
----------------------------------	------------

<b>Heavy Mobile Equipment (Excavators, Loaders, etc)</b>	<b>N/A</b>
--	------------

<b>Cranes</b>	<b>N/A</b>
---------------	------------

<b>Cylinder Storage</b>	<b>N/A</b>
-------------------------	------------

<b>Ladders</b>	<b>Unsatisfactory</b>
----------------	-----------------------

<b>Comment</b>	
Ladder is being used improperly	

# Operations

## Personal Protective Equipment

**Satisfactory**

### Comment

Most all of the workers were wearing hardhats, there was a couple incidents where they weren't wearing safety glasses.



## Trenching & Excavation

**N/A**

## Fall Protection

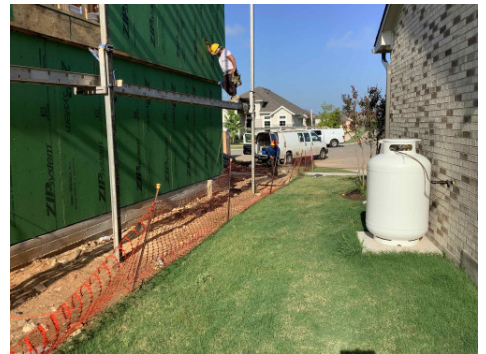
**Unsatisfactory**

### Comment

No fall protection was being worn, there was a roofer without fall protection. And a framer on a pump scaffolding wasn't wearing any fall protection.



Framer not wearing any fall protection



## Guardrails

**N/A**

## Floor / Wall Openings

**Unsatisfactory**

**Comment**

Opening on second floor needs to have a rail going across it, for fall protection



**Supported Scaffolding**

**N/A**

**Mobile Scaffolding**

**N/A**

**Suspended Scaffolding**

**Unsatisfactory**

**Comment**

Scaffolding was missing a lot of parts, mud seals, base plates. Noted in pictures.



No base plate



**Confined Spaces**


**N/A**

**Impalement Hazards**

**N/A**

<b>Traffic Control</b>	<b>N/A</b>
------------------------	------------

<b>Roofing Operations</b>	<b>Unsatisfactory</b>
---------------------------	-----------------------

<b>Comment</b>	
No fall protection, being worn by this roofer	

<b>Housekeeping</b>	<b>Satisfactory</b>
---------------------	---------------------

<b>Comment</b>	
Housekeeping was really good	

<b>Demolition</b>	<b>N/A</b>
-------------------	------------

<b>Silica Control</b>	<b>N/A</b>
-----------------------	------------

<b>Rigging Operations</b>	<b>N/A</b>
---------------------------	------------

<b>Hot Work</b>	<b>N/A</b>
-----------------	------------

<b>Electrical Safety</b>	<b>N/A</b>
--------------------------	------------

<b>Lockout / Tagout</b>	<b>N/A</b>
-------------------------	------------

<b>Stairways, Ramps, Runways</b>	<b>N/A</b>
----------------------------------	------------

<b>Other Items (that were observed)</b>	<b>N/A</b>
---	------------