

SAFETY INSPECTION REPORT

CONDUCTED FOR:

Inland Building Construction Companies Inc

PROJECT:

24-009 Fine Arts Cypress College



INSPECTION TYPE:

General Construction

INSPECTOR : JASON CHAVEZ

DATE : OCTOBER 23, 2024

CITY : CYPRESS

STATE : CA

Safety Compliance Company is not responsible for unsafe conditions and situations not seen during this inspection. The items listed above represent only what was seen by the Safety Compliance Company Representative at the time of the inspection. Safety Compliance Company is not responsible for any ongoing unsafe condition(s) whether seen or unseen. In addition, Safety Compliance Company does not have the authority or authorization to approve, certify, or warranty any safety equipment or safety device. This agreement also indemnifies Safety Compliance Company of any omission, gross negligence, willful misconduct related to this report. Under Federal, State and Local Law, it is the responsibility of the employer and all subcontractors to mark all hazards with appropriate signs

SUMMARY OF INSPECTION

53 Items Inspected	22 Satisfactory	7 Unsatisfactory	24 N/A
------------------------------	---------------------------	----------------------------	------------------

The site was visited for a safety inspection. The contractors on site were observed regarding items including PPE, tools, and equipment and safe practices. Items of concern are noted in this report. The observations were discussed with the foreman.

Documentation items Update:

The status of the documentation items remains the same for this report. The office is working on a solution.

Contractors Onsite:

Inland Builders Crew

Site Specific Activity:

Sand blasting, excavating caissons, blowing holes for slab dowels.

INSPECTION ITEMS

Documentation

Site Contact	Satisfactory
Comment	
Rusty Defalco in onsite and available.	-

Safety Program (Including IIPP)

Satisfactory

Comment	
The updated digital IIPP is available in PlanGrid. However, the document dates 2020. Please ensure the most recent version of the IIPP is uploaded and available.	-

Heat Illness Prevention Program

Satisfactory

Comment	
The Heat Illness program is available in section 5 of the IIPP	-

Safety Data Sheets		Unsatisfactory
Comment		
Please ensure all safety data sheets are onsite and available to all workers.	-	
Daily Inspections		Unsatisfactory
Comment		
Please ensure a daily safety inspection is conducted and documented. The safety inspection may include deficient items observed that were corrected.	-	
Tailgate Meetings		Satisfactory
Comment		
Reported completed weekly and sent to the office.	-	
Sub-Contractor Meetings		N/A
OSHA Permits		N/A
Labor Law Postings		Unsatisfactory
Comment		
The Inland crew does not have a compliance board to post all Labor Law and safety compliance posters. Please ensure the posters are available in the work bin or on a safety board for the job site.	-	
Emergency / Other Postings		Unsatisfactory
Comment		
Emergency contact info and map is not posted for Inland builders. This may be posted in the general contractors trailer but should be available to all Inland workers.	-	
First Aid / CPR Certification		Unsatisfactory
Comment		
The foreman noted that First Aid/CPR training has lapsed. This certification should be updated and maintained every two years.	-	

Emergency Items

Access / Egress	Satisfactory
Comment	
Access onsite is being well maintained.	-

Elevator for Hoisting Workers (if needed)	N/A
--------------------------------------------------	------------

Fire Extinguisher(s)	Satisfactory
-----------------------------	---------------------

First Aid Kit(s)	Satisfactory
-------------------------	---------------------

Eye Wash Station	N/A
-------------------------	------------

Other Fire Fighting Equipment (If needed)	N/A
--------------------------------------------------	------------

General Items

Restrooms	Satisfactory
Comment	
Restrooms are clean and supplied.	-

Hand Washing Stations	Satisfactory
Comment	
Hand wash station is located outside and stocked.	-

Waste Containers	Satisfactory
Comment	
Plenty of waste containers are observed.	-

Potable Water	Satisfactory
Comment	
Inland has plenty of water onsite and available.	-

Shade	Satisfactory
Comment	

Shade structure is setup.	-
---------------------------	---

Tools & Equipment

Power Tools	Unsatisfactory
--------------------	-----------------------

Comment	
----------------	--

Inland worker is using a chop saw that is missing the guard. The worker noted he did not realize the guard was missing. Please train workers of the requirement to inspect power tools prior to use. Please train workers the requirement to use proper Lock Out Tag Out of deficient tools so other workers are not affected by a deficient tool. The worker removed the tool immediately.



Hand Tools	Satisfactory
-------------------	---------------------

Powder Actuated Tools	N/A
------------------------------	------------

Pneumatic Nailers	N/A
--------------------------	------------

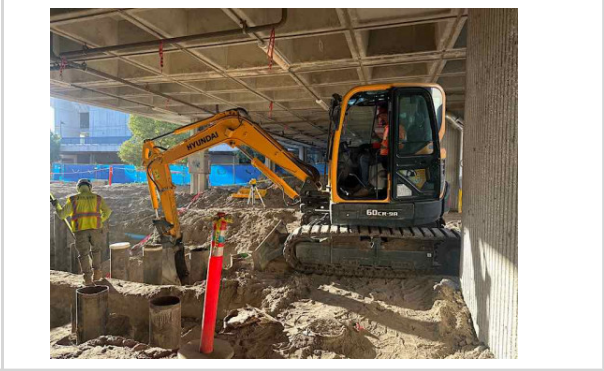
Mobile Elevated Work Platforms (MEWP's)	N/A
------------------------------------------------	------------

Powered Industrial Trucks	N/A
----------------------------------	------------

Heavy Mobile Equipment (Excavators, Loaders, etc)	Unsatisfactory
----------------------------------------------------------	-----------------------

Comment	
----------------	--

The mini ex is in operation, however a daily inspection was not completed prior to use. Please train workers the importance of a daily inspection documented prior to the equipment in use. The foreman noted and was completing the inspection record.



Cranes	N/A
---------------	------------

Cylinder Storage	Satisfactory
-------------------------	---------------------

Ladders	N/A
----------------	------------

Operations

Personal Protective Equipment	Satisfactory
--------------------------------------	---------------------

Comment

PPE was in good order throughout the site.



Trenching & Excavation	Satisfactory
-----------------------------------	---------------------

Fall Protection	N/A
------------------------	------------

Guardrails	N/A
-------------------	------------

Floor / Wall Openings	N/A
------------------------------	------------

Supported Scaffolding	N/A
------------------------------	------------

Mobile Scaffolding	N/A
---------------------------	------------

Suspended Scaffolding	N/A
------------------------------	------------

Confined Spaces	N/A
------------------------	------------

Impalement Hazards	Satisfactory
---------------------------	---------------------

Comment

Impalement hazards are being managed effectively.	-
---------------------------------------------------	---

Traffic Control	N/A
------------------------	------------

Roofing Operations	N/A
---------------------------	------------

Housekeeping	Satisfactory
---------------------	---------------------

Comment	
Housekeeping is in good order.	-

Demolition	N/A
-------------------	------------

Silica Control	Satisfactory
-----------------------	---------------------

Comment	
----------------	--

Workers are observed to be using vacuum shrouds to control silica dust during blowing operations.



Sand blasting activities are in progress. The sand blasting contractor has sufficient PPE as we as dust control. Water is being added to the top of the footing. Water is also used with the compressed air for the sand blasting. It is noted a water vapor is developing from the blasting activity. The blasting company has documentation noting the steel bits being shot do not contain silica. However, there is an uncertainty of the water vapor containing traces of silica from the small amounts of loose dust inside the holes. Therefore, the foreman closed off access through the blasting area to only those working in the area. In addition, workers around the area complied to don respiratory protection as a safeguard in the event of traces of silica dust are in the water mist. If needed, a further action was discussed to create a barrier similar to a containment barrier. A moveable section of pvc pipe with 3mm plastic that would loosely envelope to blasting area. The moveable containment could follow the process, trap water mist and thereby trap silica dust within. This would also eliminate any mist cloud from spreading throughout the site. All was discussed with the foreman.



Rigging Operations	N/A
---------------------------	------------

Hot Work	Satisfactory
-----------------	---------------------

Electrical Safety	Satisfactory
--------------------------	---------------------

Lockout / Tagout	N/A
-------------------------	------------

Stairways, Ramps, Runways	Satisfactory
----------------------------------	---------------------

Comment	
<p>Ramps are observed over excavations.</p>	

Other Items (that were observed)	N/A
-----------------------------------------	------------