

SAFETY INSPECTION REPORT

CONDUCTED FOR:
JAL Inc

PROJECT:
Chickory



INSPECTION TYPE:
General Construction

INSPECTOR : JASON CHAVEZ
DATE : JUNE 13, 2024
CITY : LOS ANGELES
STATE : CA

Safety Compliance Company is not responsible for unsafe conditions and situations not seen during this inspection. The items listed above represent only what was seen by the Safety Compliance Company Representative at the time of the inspection. Safety Compliance Company is not responsible for any ongoing unsafe condition(s) whether seen or unseen. In addition, Safety Compliance Company does not have the authority or authorization to approve, certify, or warranty any safety equipment or safety device. This agreement also indemnifies Safety Compliance Company of any omission, gross negligence, willful misconduct related to this report. Under Federal, State and Local Law, it is the responsibility of the employer and all subcontractors to mark all hazards with appropriate signs

SUMMARY OF INSPECTION

53 Items Inspected	23 Satisfactory	10 Unsatisfactory	20 N/A
------------------------------	---------------------------	-----------------------------	------------------

The site was visited for a safety inspection. The contractors on site were observed regarding items including PPE, tools, and equipment and safe practices. Items of concern are noted in this report. The observations were discussed with the superintendent.

Contractors Onsite:

- JAL
- Elias Guzman Scaffolding
- Mar Plumbing

Site Specific Activity:

Rough framing. Stucco work. Electrical rough in.

INSPECTION ITEMS

Documentation	
Site Contact	Satisfactory
Comment	
David Levi Superintendent.	-
Safety Program (Including IIPP)	Satisfactory
Heat Illness Prevention Program	Satisfactory
Safety Data Sheets	Unsatisfactory
Comment	
Please ensure all Safety Data Sheets are onsite and available.	-
Daily Inspections	Unsatisfactory
Comment	
Please ensure a daily safety inspection is completed.	-

Tailgate Meetings	Unsatisfactory
--------------------------	-----------------------

Comment	
----------------	--

Please ensure tailgate meetings are conducted every 10 working days.	-
--	---

Sub-Contractor Meetings	N/A
--------------------------------	------------

OSHA Permits	N/A
---------------------	------------

Labor Law Postings	Satisfactory
---------------------------	---------------------

Emergency / Other Postings	Satisfactory
-----------------------------------	---------------------

First Aid / CPR Certification	Satisfactory
--------------------------------------	---------------------

Emergency Items

Access / Egress	Satisfactory
------------------------	---------------------

Elevator for Hoisting Workers (if needed)	N/A
--	------------

Fire Extinguisher(s)	Satisfactory
-----------------------------	---------------------

First Aid Kit(s)	Satisfactory
-------------------------	---------------------

Eye Wash Station	N/A
-------------------------	------------

Other Fire Fighting Equipment (If needed)	N/A
--	------------

General Items

Restrooms	Satisfactory
------------------	---------------------

Hand Washing Stations	Satisfactory
------------------------------	---------------------



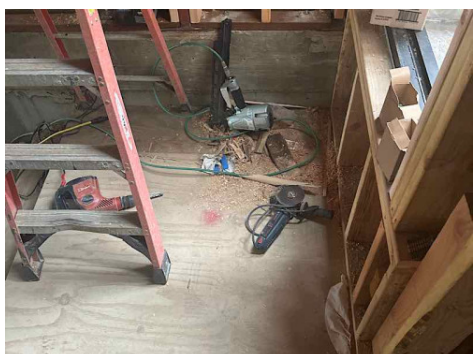
Waste Containers	Satisfactory
-------------------------	---------------------

Potable Water	Satisfactory
----------------------	---------------------

Shade	Satisfactory
--------------	---------------------

Tools & Equipment

Power Tools	Unsatisfactory
--------------------	-----------------------

Comment	
<p>The chop saw is missing the guard. All manufacturers safety elements must be in place and operational at all times. The saw should be locked and tagged out until it is repaired. Reported to the superintendent.</p>	
<p>This chop saw has the guard pinned. This is also prohibited.</p>	
<p>JAL worker has a grinder missing the guard. Please ensure all guards are in place at all times.</p>	

Hand Tools	Satisfactory
-------------------	---------------------

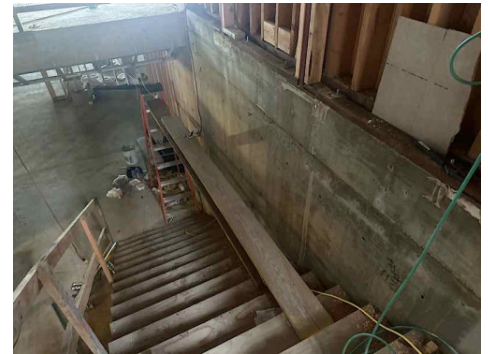
Powder Actuated Tools	N/A
------------------------------	------------

Pneumatic Nailers	Satisfactory
Mobile Elevated Work Platforms (MEWP's)	N/A
Powered Industrial Trucks	N/A
Heavy Mobile Equipment (Excavators, Loaders, etc)	N/A
Cranes	N/A
Cylinder Storage	N/A

Ladders	Unsatisfactory
----------------	-----------------------

Comment

It is prohibited to run scaffold platforms from an A frame ladder. The workers complied to remove the planks. A supported scaffold should be used instead.

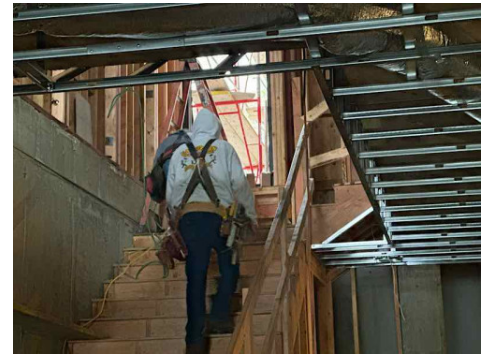


Operations

Personal Protective Equipment	Unsatisfactory
--------------------------------------	-----------------------


Comment

Several workers onsite are observed without required PPE including hard hats. Hard hats should be donned at all times onsite. Workers complied to don hard hats. Reported to the superintendent.



Trenching & Excavation	N/A
-----------------------------------	------------


Fall Protection	Unsatisfactory
------------------------	-----------------------

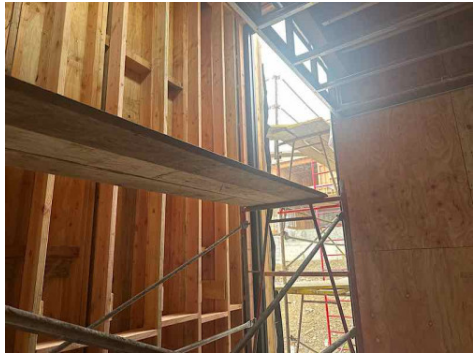
Comment	
<p>Scaffold sections serving as fall protection must be equipped with a 2x6 toe board as well as a fully planked platform within 16" of the structure to qualify as fall protection. Discussed with the superintendent.</p>	

Guardrails	Satisfactory
-------------------	---------------------

Floor / Wall Openings	Satisfactory
------------------------------	---------------------

Supported Scaffolding	Unsatisfactory
------------------------------	-----------------------

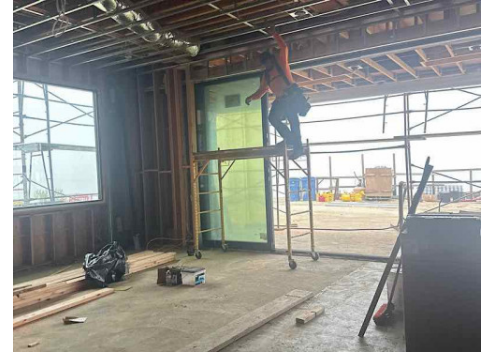
Comment	
<p>Please ensure all planks are supported by a manufactured frame. Here a planked ramp is being supported by a wire tied guard rail. The section should be supported by a frame or truss. Reported and discussed all scaffold violations with the superintendent. All scaffold must be inspected by a competent person each day prior to use. All workers must be scaffold certified to use the scaffold.</p>	

<p>Please ensure all sections of the scaffold have a ladder for access, a fully planked working section and guard rails.</p>	
--	---

Mobile Scaffolding	Unsatisfactory
---------------------------	-----------------------

Comment

JAL worker is using a mobile scaffold with the working platform above 4' without the wheels locked. The wheels must be locked when the platform is above 4'. In addition, the worker donned a hard hat.



Suspended Scaffolding

N/A

Confined Spaces

N/A

Impalement Hazards

Unsatisfactory

Comment

All rebar below 72" or below workers above must be protected with osha approved methods including caps or troughs. Reported to the superintendent.



Traffic Control

N/A

Roofing Operations

N/A

Housekeeping

Satisfactory

Demolition

N/A

Silica Control

Satisfactory

Rigging Operations

N/A

Hot Work	Satisfactory
Electrical Safety	Satisfactory
Lockout / Tagout	N/A
Stairways, Ramps, Runways	Satisfactory
Other Items (that were observed)	N/A