

SAFETY INSPECTION REPORT

CONDUCTED FOR:
Jim Murray Roofing Inc.

PROJECT:
Highland Creek Apartment



INSPECTION TYPE:
General Construction

INSPECTOR : STEVE HARRINGTON
DATE : OCTOBER 07, 2024
CITY : FULLERTON
STATE : CALIFORNIA

Safety Compliance Company is not responsible for unsafe conditions and situations not seen during this inspection. The items listed above represent only what was seen by the Safety Compliance Company Representative at the time of the inspection. Safety Compliance Company is not responsible for any ongoing unsafe condition(s) whether seen or unseen. In addition, Safety Compliance Company does not have the authority or authorization to approve, certify, or warranty any safety equipment or safety device. This agreement also indemnifies Safety Compliance Company of any omission, gross negligence, willful misconduct related to this report. Under Federal, State and Local Law, it is the responsibility of the employer and all subcontractors to mark all hazards with appropriate signs

SUMMARY OF INSPECTION

53 Items Inspected	20 Satisfactory	1 Unsatisfactory	32 N/A
------------------------------	---------------------------	----------------------------	------------------

Today I visited Jorge's job at Highland Creek Apartments. The crew were all doing an excellent job with Safe practices and house keeping. No over head hazard on this job but I did observe a potential impalement hazard, which is noted on the this report. Please see below for further details.

INSPECTION ITEMS

Documentation

Site Contact	Satisfactory
---------------------	---------------------

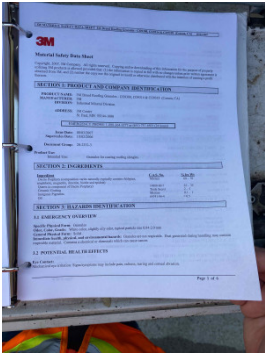
Safety Program (Including IIPP)	N/A
--	------------

Comment	
Full safety program was not on site but a streamed lined version was, please see attached image.	

Heat Illness Prevention Program	N/A
--	------------

Safety Data Sheets	Satisfactory
---------------------------	---------------------

Comment	
---------	--

<p>SDS sheet available for granules.</p>	
--	---

<p>Daily Inspections</p>	<p>Satisfactory</p>
---------------------------------	----------------------------

<p>Tailgate Meetings</p>	<p>N/A</p>
---------------------------------	-------------------

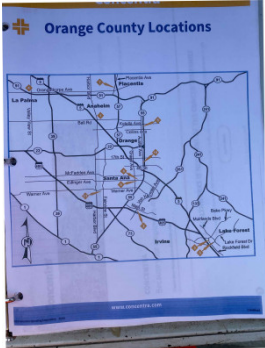
<p>Sub-Contractor Meetings</p>	<p>N/A</p>
---------------------------------------	-------------------

<p>OSHA Permits</p>	<p>N/A</p>
----------------------------	-------------------

<p>Labor Law Postings</p>	<p>Satisfactory</p>
----------------------------------	----------------------------

<p>Comment</p>	
<p>Labor law posters are available at JMRI office.</p>	<p>-</p>

<p>Emergency / Other Postings</p>	<p>Satisfactory</p>
--	----------------------------

<p>Comment</p>	
<p>Maps to nearest urgent care is available in job folder</p>	

<p>First Aid / CPR Certification</p>	<p>Satisfactory</p>
---	----------------------------

<p>Comment</p>	
<p>The entire crew was certified in CPR, First aid and AED. Certifications are valid until 3/2026</p>	<p>-</p>

Emergency Items

Access / Egress	Satisfactory
------------------------	---------------------

Elevator for Hoisting Workers (if needed)	N/A
--	------------

Fire Extinguisher(s)	Satisfactory
-----------------------------	---------------------

Comment

Fire extinguisher are in place and fully charged.



First Aid Kit(s)	Satisfactory
-------------------------	---------------------

Comment

First aid kit is in place but need to be replaced soon as some of the items have expired



Eye Wash Station	N/A
-------------------------	------------

Other Fire Fighting Equipment (If needed)	N/A
--	------------


General Items

Restrooms	N/A
------------------	------------

Hand Washing Stations	N/A
------------------------------	------------

Waste Containers	N/A
-------------------------	------------

Potable Water	Satisfactory
----------------------	---------------------


Comment	
Drinking water is available in sufficient quantities.	

Shade	Satisfactory
--------------	---------------------

Comment	
Permanent structure provides shade	-

Tools & Equipment

Power Tools	Satisfactory
--------------------	---------------------

Comment	
Power tools were in good condition and free of defects	

Hand Tools	Satisfactory
-------------------	---------------------

Comment	
----------------	--

<p>Observed Hand tools were in good condition</p>	
---	---

<p>Powder Actuated Tools</p>	<p>N/A</p>
-------------------------------------	-------------------

<p>Pneumatic Nailers</p>	<p>N/A</p>
---------------------------------	-------------------

<p>Mobile Elevated Work Plarforms (MEWP's)</p>	<p>N/A</p>
---	-------------------

<p>Powered Industrial Trucks</p>	<p>N/A</p>
---	-------------------

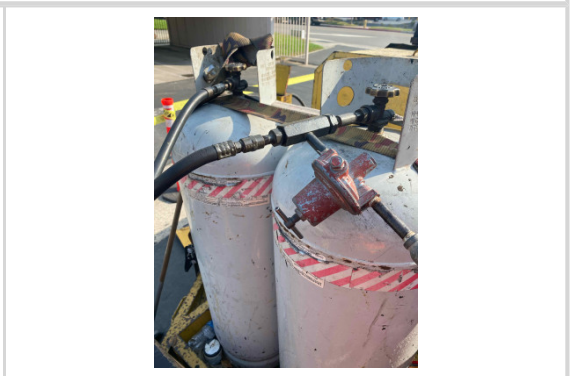
<p>Heavy Mobile Equipment (Excavators, Loaders, etc)</p>	<p>N/A</p>
---	-------------------

<p>Cranes</p>	<p>N/A</p>
----------------------	-------------------

<p>Cylinder Storage</p>	<p>Satisfactory</p>
--------------------------------	----------------------------

<p>Comment</p>	
-----------------------	--

<p>Cylinders are safely stored and regulator is in place.</p>



<p>Ladders</p>	<p>Unsatisfactory</p>
-----------------------	------------------------------

<p>Comment</p>	
-----------------------	--

Heavy build up of tar can cause preventable injuries. Jorge will be cleaning it or replacing it.



Operations

Personal Protective Equipment

Satisfactory

Comment

Thick leather gloves are being utilized when handling the kettle



Trenching & Excavation

N/A

Fall Protection

N/A

Guardrails

N/A

Floor / Wall Openings

N/A

Supported Scaffolding

N/A

Mobile Scaffolding

N/A

Suspended Scaffolding


N/A


Confined Spaces

N/A

Impalement Hazards	Satisfactory
---------------------------	---------------------

Comment	
----------------	--

<p>Potential impalement hazard was observed on the top of the gate. Ladder was relocated and lumber was be set on top</p>	
---	---

<p>Picture here are the guys attempting to fasten lumber over impalement hazard.</p>	
--	--

Traffic Control	N/A
------------------------	------------

Roofing Operations	Satisfactory
---------------------------	---------------------

Housekeeping	Satisfactory
---------------------	---------------------

Demolition	N/A
-------------------	------------

Silica Control	N/A
-----------------------	------------

Rigging Operations	N/A
---------------------------	------------

Hot Work	Satisfactory
-----------------	---------------------

Comment	
----------------	--

Controlled access zone is set up around kettle as required. Fire extinguisher are readily available and kettle man has been designated



Electrical Safety

N/A

Lockout / Tagout

N/A

Stairways, Ramps, Runways

N/A

Other Items (that were observed)

Satisfactory

Comment

Extension tools are being used instead of working from ladder. This helps Control the risk of falls



Carport underside was reviewed for deficiencies and workers were consulted structural integrity

