

# SAFETY INSPECTION REPORT

**CONDUCTED FOR:**  
Kincaid Construction Company

**PROJECT:**  
Solana (Duarte)



**INSPECTION TYPE:**  
General Construction

**INSPECTOR :** ALEX MARTINEZ  
**DATE :** MAY 02, 2024  
**CITY :** DUARTE  
**STATE :** CALIFORNIA

Safety Compliance Company is not responsible for unsafe conditions and situations not seen during this inspection. The items listed above represent only what was seen by the Safety Compliance Company Representative at the time of the inspection. Safety Compliance Company is not responsible for any ongoing unsafe condition(s) whether seen or unseen. In addition, Safety Compliance Company does not have the authority or authorization to approve, certify, or warranty any safety equipment or safety device. This agreement also indemnifies Safety Compliance Company of any omission, gross negligence, willful misconduct related to this report. Under Federal, State and Local Law, it is the responsibility of the employer and all subcontractors to mark all hazards with appropriate signs

# SUMMARY OF INSPECTION

<b>52</b> Items Inspected	<b>34</b> Satisfactory	<b>3</b> Unsatisfactory	<b>15</b> N/A
------------------------------	---------------------------	----------------------------	------------------

The Kincaid crew has done a great job of elevating the housekeeping at the job site, more specifically in keeping walking and evacuation routes clear of material and trash. There were a few areas under the scaffolding that require attention. Please keep in mind these areas are expected to be kept clear if they may be used as an emergency route for an evacuation.

Please follow up on the 2 sections of guardrail that required attention. See guardrail section for photos.

# INSPECTION ITEMS

## Documentation

**Site Contact**

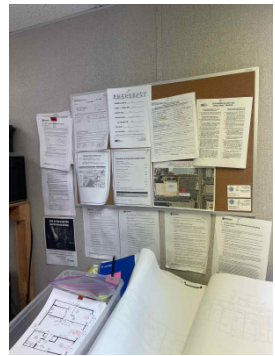
Satisfactory

**Safety Program (Including IIPP)**

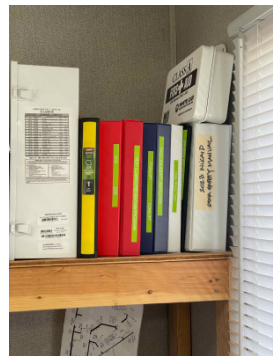
Satisfactory

**Comment**

Type your custom comment...



Type your custom comment...



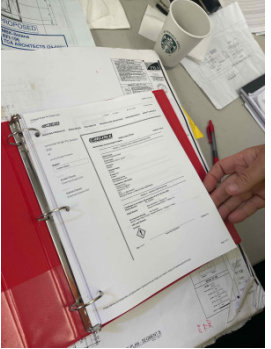
**Heat Illness Prevention Program** **Satisfactory**

**Comment**

HIPP is posted in the site trailer. -

**Safety Data Sheets** **Satisfactory**

**Comment**

Please be sure to add an inventory list. 

**Daily Inspections** **Satisfactory**

**Tailgate Meetings** **Satisfactory**

**Comment**

Type your custom comment... 

**Sub-Contractor Meetings** **Satisfactory**

**OSHA Permits** **Satisfactory**


**Labor Law Postings** **Satisfactory**

**Emergency / Other Postings** **Satisfactory**

<b>First Aid / CPR Certification</b>	<b>Satisfactory</b>
--------------------------------------	---------------------


## Emergency Items

<b>Access / Egress</b>	<b>Satisfactory</b>
------------------------	---------------------

<b>Comment</b>	
Access and egress is improving on site.	

<b>Fire Extinguisher(s)</b>	<b>Satisfactory</b>
-----------------------------	---------------------

<b>First Aid Kit(s)</b>	<b>Satisfactory</b>
-------------------------	---------------------

<b>Comment</b>	
Type your custom comment...	

<b>Eye Wash Station</b>	<b>N/A</b>
-------------------------	------------

<b>Other Fire Fighting Equipment (If needed)</b>	<b>N/A</b>
--	------------

## General Items

<b>Restrooms</b>	<b>Satisfactory</b>
------------------	---------------------

<b>Hand Washing Stations</b>	<b>Satisfactory</b>
------------------------------	---------------------

Waste Containers	Satisfactory
------------------	--------------

Potable Water	Satisfactory
---------------	--------------

Shade	Satisfactory
-------	--------------

## Tools & Equipment

Power Tools	Satisfactory
-------------	--------------

Hand Tools	Satisfactory
------------	--------------

Powder Actuated Tools	N/A
-----------------------	-----

Pneumatic Nailers	Satisfactory
-------------------	--------------

Mobile Elevated Work Platforms (MEWP's)	N/A
---	-----

Powered Industrial Trucks	Satisfactory
---------------------------	--------------

Heavy Mobile Equipment (Excavators, Loaders, etc)	N/A
---	-----

Cranes	Satisfactory
--------	--------------

Cylinder Storage	N/A
------------------	-----

Ladders	Unsatisfactory
---------	----------------

**Comment**

A crew member was consulted when he was observed unsafely standing on the top rungs of a ladder.



**Operations**

**Personal Protective Equipment** **Satisfactory**

**Comment**

Type your custom comment...	-
-----------------------------	---

**Trenching & Excavation** **N/A**

**Fall Protection** **N/A**

**Guardrails** **Unsatisfactory**

**Comment**

This section of guardrails required reinforcement. Guardrails are expected to withstand at minimum 200lbs of pressure from any direction.



The mid rail in this balcony is too high, please ensure all rails are set with the mid rail at 21" and top rail 42"-45".



**Floor / Wall Openings** **Satisfactory**


**Supported Scaffolding** **Satisfactory**

**Mobile Scaffolding** **Satisfactory**

**Suspended Scaffolding** **N/A**

<b>Confined Spaces</b>	<b>N/A</b>
------------------------	------------

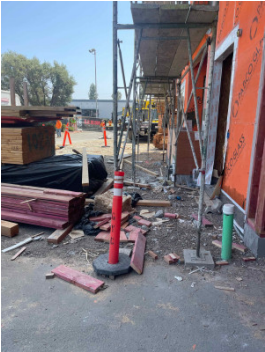
<b>Impalement Hazards</b>	<b>Satisfactory</b>
---------------------------	---------------------

<b>Comment</b>	
Thank you for guarding the impalement hazards	

<b>Traffic Control</b>	<b>N/A</b>
------------------------	------------

<b>Roofing Operations</b>	<b>Satisfactory</b>
---------------------------	---------------------

<b>Housekeeping</b>	<b>Unsatisfactory</b>
---------------------	-----------------------

<b>Comment</b>	
Let's be sure to keep all areas below the scaffolding clear of material, some of these are routes used to enter and exit the scaffolding.	

<b>Demolition</b>	<b>N/A</b>
-------------------	------------

<b>Silica Control</b>	<b>N/A</b>
-----------------------	------------

<b>Rigging Operations</b>	<b>Satisfactory</b>
---------------------------	---------------------

<b>Hot Work</b>	<b>N/A</b>
-----------------	------------

<b>Electrical Safety</b>	<b>Satisfactory</b>
<b>Lockout / Tagout</b>	<b>Satisfactory</b>
<b>Stairways, Ramps, Runways</b>	<b>Satisfactory</b>
<b>Other Items (that were observed)</b>	<b>N/A</b>