

# SAFETY INSPECTION REPORT

**CONDUCTED FOR:**  
Krikorian Construction, Inc.

**PROJECT:**  
873 3rd St



**INSPECTION TYPE:**  
General Construction

**INSPECTOR :** LINDSEY CRAVEN  
**DATE :** APRIL 29, 2024  
**CITY :** MANHATTAN BEACH  
**STATE :** CA

Safety Compliance Company is not responsible for unsafe conditions and situations not seen during this inspection. The items listed above represent only what was seen by the Safety Compliance Company Representative at the time of the inspection. Safety Compliance Company is not responsible for any ongoing unsafe condition(s) whether seen or unseen. In addition, Safety Compliance Company does not have the authority or authorization to approve, certify, or warranty any safety equipment or safety device. This agreement also indemnifies Safety Compliance Company of any omission, gross negligence, willful misconduct related to this report. Under Federal, State and Local Law, it is the responsibility of the employer and all subcontractors to mark all hazards with appropriate signs

# SUMMARY OF INSPECTION

<b>52</b> Items Inspected	<b>23</b> Satisfactory	<b>7</b> Unsatisfactory	<b>22</b> N/A
------------------------------	---------------------------	----------------------------	------------------

Contractors on site:

- ALP Painting
- Crane Plumbing
- GMac Electrical

Painting contractors were sanding throughout house. They were wearing N95 masks and working safely on ladders.

Electrician was making a materials list.

Crane plumbing was walking the site with Dan and crew was working in the bathrooms.

# INSPECTION ITEMS

## Documentation

<b>Site Contact</b>	<b>Satisfactory</b>
<b>Comment</b>	
Adam was on site.	-

<b>Safety Program (Including IIPP)</b>	<b>Satisfactory</b>
<b>Heat Illness Prevention Program</b>	<b>Satisfactory</b>
<b>Safety Data Sheets</b>	<b>Satisfactory</b>
<b>Daily Inspections</b>	<b>Satisfactory</b>
<b>Tailgate Meetings</b>	<b>Satisfactory</b>

<b>Sub-Contractor Meetings</b>	<b>Satisfactory</b>
--------------------------------	---------------------

<b>OSHA Permits</b>	<b>N/A</b>
---------------------	------------

<b>Labor Law Postings</b>	<b>Unsatisfactory</b>
---------------------------	-----------------------

<b>Comment</b>	
Updated 2024 postings needed from office.	-

<b>Emergency / Other Postings</b>	<b>Satisfactory</b>
-----------------------------------	---------------------

<b>Comment</b>	
----------------	--

Route to nearest medical facility is posted.	
----------------------------------------------	--------------------------------------------------------------------------------------

<b>First Aid / CPR Certification</b>	<b>Satisfactory</b>
--------------------------------------	---------------------

## Emergency Items

<b>Access / Egress</b>	<b>Satisfactory</b>
------------------------	---------------------

<b>Fire Extinguisher(s)</b>	<b>Satisfactory</b>
-----------------------------	---------------------

<b>First Aid Kit(s)</b>	<b>Satisfactory</b>
-------------------------	---------------------

<b>Comment</b>	
----------------	--

Located in garage.	
--------------------	---------------------------------------------------------------------------------------

<b>Eye Wash Station</b>	<b>Satisfactory</b>
-------------------------	---------------------

<b>Comment</b>	
Located in first aid kit.	-


<b>Other Fire Fighting Equipment (If needed)</b>	<b>N/A</b>
--------------------------------------------------	------------

## General Items

<b>Restrooms</b>	<b>Satisfactory</b>
------------------	---------------------

<b>Comment</b>	
Available on site.	-

<b>Hand Washing Stations</b>	<b>Unsatisfactory</b>
------------------------------	-----------------------

<b>Comment</b>	
Handwashing station is fully stocked, but it cannot be accessed because of where materials are being stored.	

<b>Waste Containers</b>	<b>Unsatisfactory</b>
-------------------------	-----------------------

<b>Comment</b>	
No waste containers available near the wash station.	-

<b>Potable Water</b>	<b>Satisfactory</b>
----------------------	---------------------

<b>Shade</b>	<b>Satisfactory</b>
--------------	---------------------

<b>Comment</b>	
Building being used as means of shade	-

## Tools & Equipment

<b>Cranes</b>	<b>N/A</b>
---------------	------------

<b>Hand Tools</b>	<b>Satisfactory</b>
-------------------	---------------------

Comment	
No hazards observed.	-

<b>Heavy Mobile Equipment (Excavators, Loaders, etc)</b>	<b>N/A</b>
----------------------------------------------------------	------------

<b>Powder Actuated Tools</b>	<b>N/A</b>
------------------------------	------------

<b>Cylinder Storage</b>	<b>N/A</b>
-------------------------	------------

<b>Pneumatic Nailers</b>	<b>N/A</b>
--------------------------	------------

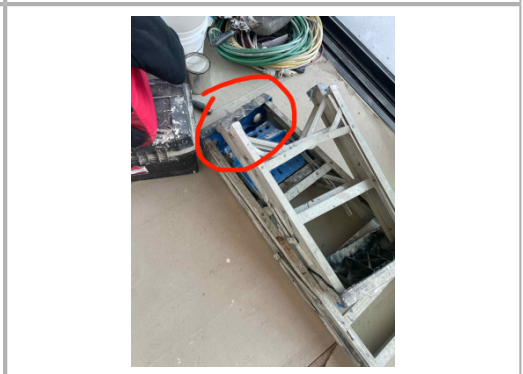
<b>Ladders</b>	<b>Unsatisfactory</b>
----------------	-----------------------

Comment	
---------	--

Many ladders on site are missing the required safety stickers. Some are covered in paint or other material. Ensure replacement safety stickers are purchased and ladders are in good repair.



Top cap of ladder is damaged. Ladder should be removed from site.



<b>Mobile Elevated Work Platforms (MEWP's)</b>	<b>N/A</b>
------------------------------------------------	------------

<b>Powered Industrial Trucks</b>	<b>N/A</b>
----------------------------------	------------

<b>Power Tools</b>	<b>Satisfactory</b>
--------------------	---------------------

## Operations

### Trenching & Excavation

**Unsatisfactory**

#### Comment

Until the pool is filled, delineation with caution tape is needed around pool area.



### Electrical Safety

**Unsatisfactory**

#### Comment

String lights need to be mounted up off the ground and sockets are needed as these are live energized exposed parts.



### Housekeeping

**Satisfactory**

#### Comment

Site is clean. Trash is being kept in one place at front of site.

-

### Suspended Scaffolding

**N/A**

### Fall Protection

**N/A**

### Lockout / Tagout

**N/A**

### Demolition

**N/A**

<b>Confined Spaces</b>	<b>N/A</b>
------------------------	------------

<b>Guardrails</b>	<b>Satisfactory</b>
-------------------	---------------------

<b>Comment</b>	
Permanent guardrails are in place on stairways.	-

<b>Stairways, Ramps, Runways</b>	<b>Satisfactory</b>
----------------------------------	---------------------

<b>Silica Control</b>	<b>N/A</b>
-----------------------	------------

<b>Impalement Hazards</b>	<b>N/A</b>
---------------------------	------------


<b>Other Items (that were observed)</b>	<b>N/A</b>
-----------------------------------------	------------

<b>Floor / Wall Openings</b>	<b>Satisfactory</b>
------------------------------	---------------------

<b>Rigging Operations</b>	<b>N/A</b>
---------------------------	------------

<b>Traffic Control</b>	<b>N/A</b>
------------------------	------------

<b>Supported Scaffolding</b>	<b>Unsatisfactory</b>
------------------------------	-----------------------

<b>Comment</b>	
<p>Scaffolding inside the building has bases that are not secured to mud sills. Frame must be double nailed to mud sill.</p>	

End rails and interior guard rails are missing.



Guard rails are missing at top level of scaffolding at front of house.




Midrail is missing and adjoining midrail is unattached to frame.



Toe board is in place on upper level in this photo where stone is present on the scaffolding. Toe board is needed on lower level also.





<p>Plank is missing. All frames must be fully planked.</p>	
<p>All scaffolding on site must be red-tagged as “Do Not Use” and no one should be allowed to use it until it is made safe by a qualified erector and a competent person signs off on it. A green tag/red tag system is recommended where the competent person inspects the scaffold daily and signs off when it is safe to use.</p>	<p>-</p>

<p><b>Personal Protective Equipment</b></p>	<p><b>Satisfactory</b></p>
<p><b>Comment</b></p>	
<p>Painters were wearing N95 masks while sanding.</p>	<p>-</p>
<p><b>Hot Work</b></p>	<p><b>N/A</b></p>
<p><b>Roofing Operations</b></p>	<p><b>N/A</b></p>
<p><b>Mobile Scaffolding</b></p>	<p><b>N/A</b></p>