

SAFETY INSPECTION REPORT

CONDUCTED FOR:
Majestic Masonry

PROJECT:
1232 High St



INSPECTION TYPE:
General Construction

INSPECTOR : JOSHUA JOHNSON
DATE : AUGUST 22, 2024
CITY : OAKLAND
STATE : CA

Safety Compliance Company is not responsible for unsafe conditions and situations not seen during this inspection. The items listed above represent only what was seen by the Safety Compliance Company Representative at the time of the inspection. Safety Compliance Company is not responsible for any ongoing unsafe condition(s) whether seen or unseen. In addition, Safety Compliance Company does not have the authority or authorization to approve, certify, or warranty any safety equipment or safety device. This agreement also indemnifies Safety Compliance Company of any omission, gross negligence, willful misconduct related to this report. Under Federal, State and Local Law, it is the responsibility of the employer and all subcontractors to mark all hazards with appropriate signs

SUMMARY OF INSPECTION

53 Items Inspected	31 Satisfactory	1 Unsatisfactory	21 N/A
------------------------------	---------------------------	----------------------------	------------------

A site inspection was carried out on-site today and I was able to walk the site and look for any safety concerns. Masonry work is moving forward.

Note the following good items that were observed:

- + Fire extinguishers are in place.
- + GC has documentation in place.
- + Bathrooms are stocked and clean.
- + Safe reach-lift operation observed.
- + PPE use observed.
- + Impalement hazards are protected.
- + Ramps are installed safely.

Note the following violations that need to be addressed:

Scaffolding:

- Fall hazards observed at ladder access points. Ensure gates are installed to mitigate this hazard.
- Fall hazards observed of sidebrackets. Esure railings are installed.
- Toe boards missing at locations of access and egress. Ensure they are added.

Overall, the site was found in satisfactory condition.

•• Please see additional report notations below. •••

INSPECTION ITEMS

Documentation

Site Contact	Satisfactory
Comment	
Jonathan Castro	-

Safety Program (Including IIPP)

Satisfactory


Heat Illness Prevention Program	Satisfactory
Safety Data Sheets	Satisfactory
Daily Inspections	Satisfactory
Tailgate Meetings	Satisfactory
Sub-Contractor Meetings	N/A
OSHA Permits	Satisfactory
Labor Law Postings	Satisfactory
Emergency / Other Postings	Satisfactory
First Aid / CPR Certification	Satisfactory

Emergency Items

Access / Egress	Satisfactory
Comment	
Safe access is in place.	-

Elevator for Hoisting Workers (if needed)	N/A
---	-----

Fire Extinguisher(s)	Satisfactory
Comment	


<p>Available throughout the site.</p>	
---------------------------------------	---

<p>First Aid Kit(s) Satisfactory</p>	
<p style="text-align: center;">Comment</p>	
<p>Available from the GC.</p>	<p style="text-align: center;">-</p>

<p>Eye Wash Station Satisfactory</p>	
<p style="text-align: center;">Comment</p>	
<p>Available on site.</p>	<p style="text-align: center;">-</p>

<p>Other Fire Fighting Equipment (If needed) N/A</p>

General Items

<p>Restrooms Satisfactory</p>	
<p style="text-align: center;">Comment</p>	
<p>Stocked and clean.</p>	

<p>Hand Washing Stations Satisfactory</p>
--

<p>Waste Containers Satisfactory</p>

<p>Potable Water Satisfactory</p>
--

Comment	
Available on site.	-

Shade	Satisfactory
Comment	
Provided by the building and scaffold structures.	-

Tools & Equipment


Power Tools	Satisfactory
Comment	
No concerns observed.	-

Hand Tools	Satisfactory
Comment	
No concerns observed.	-

Powder Actuated Tools	N/A
------------------------------	------------

Pneumatic Nailers	N/A
--------------------------	------------

Mobile Elevated Work Platforms (MEWP's)	N/A
--	------------

Powered Industrial Trucks	Satisfactory
Comment	
Safe operation observed. Good job wearing your seatbelt!	

Heavy Mobile Equipment (Excavators, Loaders, etc)	N/A
--	------------


Cranes	N/A
---------------	------------

Cylinder Storage	N/A
-------------------------	------------

Ladders	Satisfactory
----------------	---------------------

Operations

Personal Protective Equipment	Satisfactory
--------------------------------------	---------------------

Comment	
Good PPE usage observed during the visit.	

Trenching & Excavation	N/A
-----------------------------------	------------

Fall Protection	Satisfactory
------------------------	---------------------

Comment	
See scaffolding comments.	-

Guardrails	Satisfactory
-------------------	---------------------

Comment	
See scaffolding comments.	-

Floor / Wall Openings	N/A
------------------------------	------------

Supported Scaffolding	Unsatisfactory
------------------------------	-----------------------

Comment	
---------	--

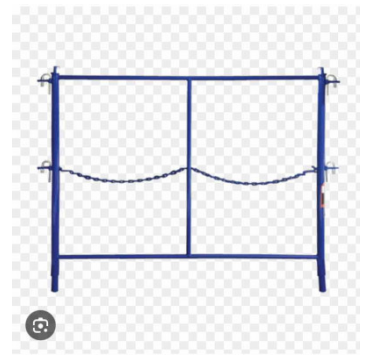
Good job using the green tag system.



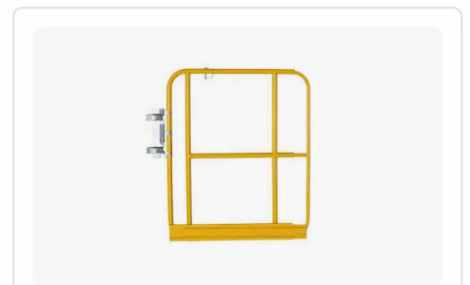
Fall hazard at ladder access location. Consider using a gate for access. See additional photo for more information.




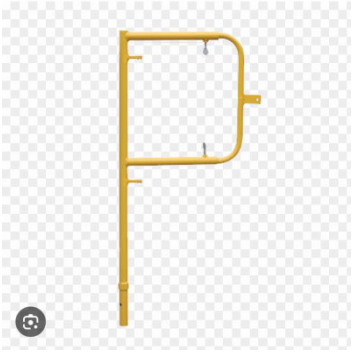

An example of a gate that can be used.



Another example of a clamp on gate that can be used.

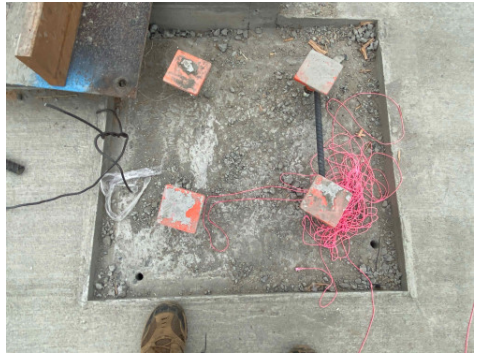


Adjustable Swing Gate

<p>Fall hazard due to know rails being on the side bracket platform. See example of P rail that can be used.</p>	
<p>Example of a P rail that can be used on a side bracket.</p>	
<p>Toe boards needed above this ramp and walkway. Toe boards protect from falling debris.</p>	

<p>Mobile Scaffolding</p>	<p>N/A</p>
<p>Suspended Scaffolding</p>	<p>N/A</p>
<p>Confined Spaces</p>	<p>N/A</p>
<p>Impalement Hazards</p>	<p>Satisfactory</p>
<p>Comment</p>	

Good job protecting hazards.



Traffic Control **N/A**

Roofing Operations **N/A**

Housekeeping **Satisfactory**

Comment	
Housekeeping is being well-maintained.	-

Demolition **N/A**

Silica Control **Satisfactory**

Rigging Operations **N/A**

Hot Work **N/A**

Electrical Safety **Satisfactory**

Comment	
No concerns observed.	-

Lockout / Tagout **N/A**

Stairways, Ramps, Runways **Satisfactory**

Comment	

Safe ramps observed.



Other Items (that were observed)

N/A