



# PROJECT INSPECTION

Generated by Safety Compliance App [www.safetycompliance.com](http://www.safetycompliance.com) | [www.safetycomplianceapp.com](http://www.safetycomplianceapp.com)

<b>Company</b>	Mark Wilson Construction, Inc	<b>Type of Inspection:</b>	General Construction
<b>Project</b>	Clovis DO Expansion	<b>Date of Inspection</b>	May 17, 2024
<b>Inspector Name</b>	Jon Turl	<b>Time of Inspection</b>	07:47 AM

## NOTES

<b>19</b> Items Inspected	<b>13</b> Satisfactory	<b>0</b> Unsatisfactory	<b>6</b> N/A
------------------------------	---------------------------	----------------------------	-----------------

## INSPECTION ITEMS

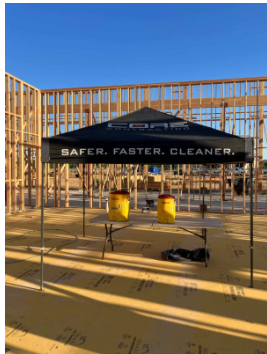
### General

Is emergency equipment available, including first aid kit(s) and fire extinguisher(s)? **Satisfactory**

Is safety documentation available (Written Safety Programs, SDS, Tailgate Meetings) **Satisfactory**

Is drinking water and shade set up sufficient for the amount of workers? **Satisfactory**

**Comment**

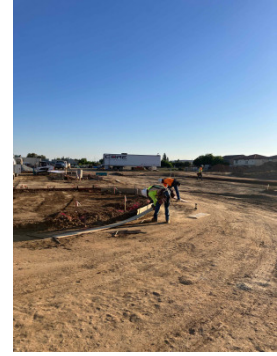
Core has adequate water and shade available for crew	
--	---

Are emergency and labor law postings in place? **Satisfactory**

Is Personal Protective Equipment being worn as required? **Satisfactory**

**Comment**

Todd Conc crew



**Are scaffolding safety procedures being followed?**

**N/A**

**Are hand and power tools being used safely?**

**Satisfactory**

**Is good housekeeping being maintained?**

**Satisfactory**

**Is fall protection in place where required?**

**Satisfactory**

**Is trenching & excavation work being done safely?**

**Satisfactory**

**Are confined space safety procedures being followed?**

**N/A**

**Are scissor lifts / elevated platforms being used safely?**

**Satisfactory**

**Are boom lifts and other aerial devices being used safely?**

**N/A**

**Is heavy equipment being used safely?**

**Satisfactory**

**Are electrical items being used safely?**

**Satisfactory**

**Comment**

Generators

-

**Are roofing operations being performed safely?**

**N/A**

**Is demolition work being done safely?**

**N/A**

**Are all other tasks being performed safely?**

**Satisfactory**

**Any other items?**

**N/A**

