



# PROJECT INSPECTION

Generated by Safety Compliance App [www.safetycompliance.com](http://www.safetycompliance.com) | [www.safetycomplianceapp.com](http://www.safetycomplianceapp.com)

<b>Company</b>	Mark Wilson Construction, Inc	<b>Type of Inspection:</b>	General Construction
<b>Project</b>	Clovis DO Expansion	<b>Date of Inspection</b>	July 01, 2024
<b>Inspector Name</b>	Jon Turl	<b>Time of Inspection</b>	06:25 AM

## NOTES

19 Items Inspected	12 Satisfactory	1 Unsatisfactory	6 N/A
-----------------------	--------------------	---------------------	----------

OCIP Inspection went good, minor corrections needed

## INSPECTION ITEMS

### General

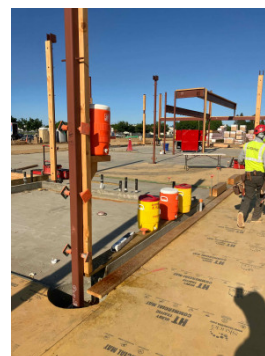
Is emergency equipment available, including first aid kit(s) and fire extinguisher(s)? **Satisfactory**

Is safety documentation available (Written Safety Programs, SDS, Tailgate Meetings) **Satisfactory**

Is drinking water and shade set up sufficient for the amount of workers? **Satisfactory**

### Comment

Core framing



Are emergency and labor law postings in place? **Satisfactory**

**Is Personal Protective Equipment being worn as required?**

**Unsatisfactory**

**Comment**

Todd Plumbing employee not wearing hard hat during construction hours



**Are scaffolding safety procedures being followed?**

**N/A**

**Are hand and power tools being used safely?**

**Satisfactory**

**Comment**

Core



**Is good housekeeping being maintained?**

**Satisfactory**

**Is fall protection in place where required?**

**Satisfactory**

**Is trenching & excavation work being done safely?**

**Satisfactory**

**Comment**

Wild



**Are confined space safety procedures being followed?**

**N/A**

**Are scissor lifts / elevated platforms being used safely?**

**Satisfactory**

**Are boom lifts and other aerial devices being used safely?**

**N/A**

**Is heavy equipment being used safely?**

**Satisfactory**

**Are electrical items being used safely?**

**Satisfactory**

**Are roofing operations being performed safely?**

**N/A**

**Is demolition work being done safely?**

**N/A**

**Are all other tasks being performed safely?**

**Satisfactory**

**Any other items?**

**N/A**