



PROJECT INSPECTION

Generated by Safety Compliance App www.safetycompliance.com | www.safetycomplianceapp.com

Company	Mark Wilson Construction, Inc	Type of Inspection:	General Construction
Project	Clovis DO Expansion	Date of Inspection	July 22, 2024
Inspector Name	Jon Turl	Time of Inspection	02:55 PM

NOTES

19 Items Inspected	15 Satisfactory	1 Unsatisfactory	3 N/A
-----------------------	--------------------	---------------------	----------

Temps are high today, crews have adequate water and shade, MWC advised crews to stop work if heat is creating safety issues

INSPECTION ITEMS

General

Is emergency equipment available, including first aid kit(s) and fire extinguisher(s)? **Satisfactory**

Is safety documentation available (Written Safety Programs, SDS, Tailgate Meetings) **Satisfactory**

Is drinking water and shade set up sufficient for the amount of workers? **Satisfactory**

Comment

MWC trailer



Are emergency and labor law postings in place?

Satisfactory

Comment

Type your custom comment...



Is Personal Protective Equipment being worn as required?

Satisfactory

Comment

Graham Prewett



Are scaffolding safety procedures being followed?

Satisfactory

Are hand and power tools being used safely?

Satisfactory

Is good housekeeping being maintained?

Satisfactory

Is fall protection in place where required?

Satisfactory

Comment

Wild elect



Is trenching & excavation work being done safely?

Satisfactory

Are confined space safety procedures being followed?

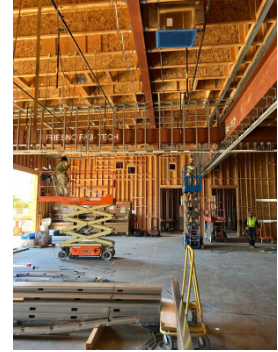
N/A

Are scissor lifts / elevated platforms being used safely?

Satisfactory

Comment

Karsyn



Are boom lifts and other aerial devices being used safely?

Satisfactory

Is heavy equipment being used safely?

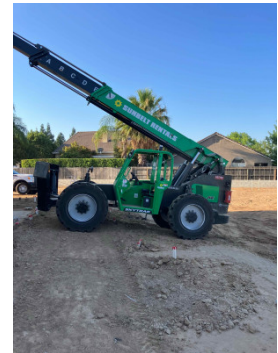
Unsatisfactory

Comment

Grah Prewett left gradall unattended while in use



Graham Prewett left Gradall unattended while in use



Are electrical items being used safely?

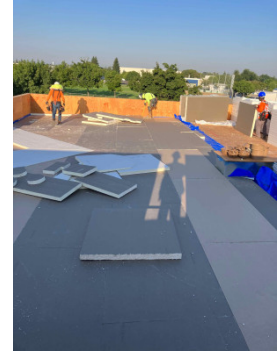
Satisfactory

Are roofing operations being performed safely?

Satisfactory

Comment

Graham Prewett had shade and water



Is demolition work being done safely?

N/A

Are all other tasks being performed safely?

Satisfactory

Any other items?

N/A