



PROJECT INSPECTION

Generated by Safety Compliance App www.safetycompliance.com | www.safetycomplianceapp.com

Company	Mark Wilson Construction, Inc	Type of Inspection:	General Construction
Project	Clovis DO Expansion	Date of Inspection	August 26, 2024
Inspector Name	Jeff Copeland	Time of Inspection	06:50 AM

NOTES

19 Items Inspected	17 Satisfactory	0 Unsatisfactory	2 N/A
-----------------------	--------------------	---------------------	----------

INSPECTION ITEMS

General

Is emergency equipment available, including first aid kit(s) and fire extinguisher(s)?	Satisfactory
Is safety documentation available (Written Safety Programs, SDS, Tailgate Meetings)	Satisfactory
Is drinking water and shade set up sufficient for the amount of workers?	Satisfactory
Are emergency and labor law postings in place?	Satisfactory
Is Personal Protective Equipment being worn as required?	Satisfactory
Are scaffolding safety procedures being followed?	Satisfactory
Are hand and power tools being used safely?	Satisfactory
Is good housekeeping being maintained?	Satisfactory
Is fall protection in place where required?	Satisfactory

Is trenching & excavation work being done safely? **Satisfactory**

Are confined space safety procedures being followed? **N/A**

Are scissor lifts / elevated platforms being used safely? **Satisfactory**

Are boom lifts and other aerial devices being used safely? **Satisfactory**

Is heavy equipment being used safely? **Satisfactory**

Are electrical items being used safely? **Satisfactory**

Are roofing operations being performed safely? **Satisfactory**

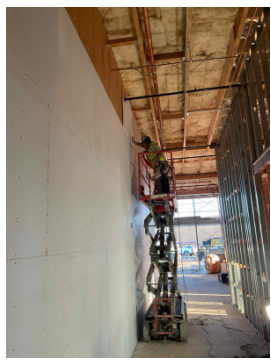
Is demolition work being done safely? **N/A**

Are all other tasks being performed safely? **Satisfactory**

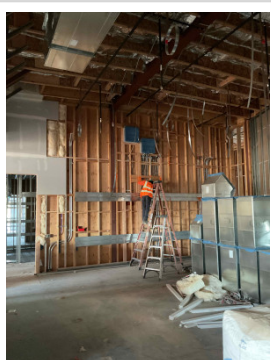
Any other items? **Satisfactory**

Comment

Type your custom comment...



Type your custom comment...



Type your custom comment...



Type your custom comment...



Type your custom comment...



Type your custom comment...

