



PROJECT INSPECTION

Generated by Safety Compliance App www.safetycompliance.com | www.safetycomplianceapp.com

Company	Mark Wilson Construction, Inc	Type of Inspection:	General Construction
Project	Clovis DO Expansion	Date of Inspection	September 12, 2024
Inspector Name	Jeremy Nagy	Time of Inspection	01:17 PM

NOTES

19 Items Inspected	14 Satisfactory	0 Unsatisfactory	5 N/A
------------------------------	---------------------------	----------------------------	-----------------

8/12/24
 Weather: 88/58 Sunny
 AQI=31 Good

Site Activities: Site concrete, irrigation, FID RCP piping install, lath, metal stud framing, MEP rough in, insulation

INSPECTION ITEMS

General

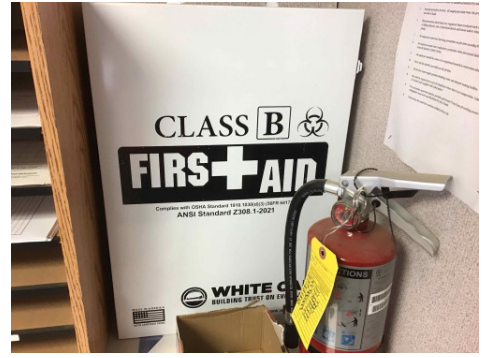
Is emergency equipment available, including first aid kit(s) and fire extinguisher(s)? **Satisfactory**

Comment

Type your custom comment...



Multiple first aid kits in project trailer



Fire extinguisher and emergency exit plan stations periodically throughout bldg



Is safety documentation available (Written Safety Programs, SDS, Tailgate Meetings)

Satisfactory

Comment

Available in project office

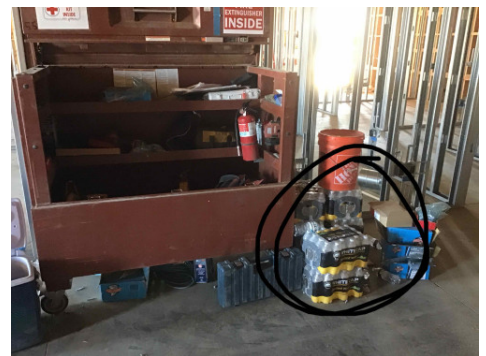


Is drinking water and shade set up sufficient for the amount of workers?

Satisfactory

Comment

Drinking water



Type your custom comment...



Are emergency and labor law postings in place?

Satisfactory

Comment

Postings in project trailer



Is Personal Protective Equipment being worn as required?

Satisfactory

Comment

PPE



Are scaffolding safety procedures being followed?

Satisfactory

Comment

All scaffold cards signed off on inspection



Are hand and power tools being used safely?

Satisfactory

Comment

PPE in place with face shield and cutting back board



Is good housekeeping being maintained?

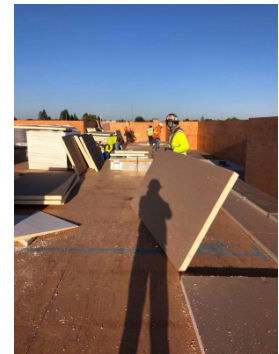
Satisfactory

Is fall protection in place where required?

N/A

Comment

Roof has tall parapet wall where fall hazard is not present



Is trenching & excavation work being done safely?

Satisfactory

Comment

Deep excavation where contractor benched trench accordingly



Are confined space safety procedures being followed?

N/A

Are scissor lifts / elevated platforms being used safely?

Satisfactory

Comment

Type your custom comment...



Are boom lifts and other aerial devices being used safely?

N/A

Is heavy equipment being used safely?

Satisfactory

Comment

Type your custom comment...



Are electrical items being used safely?

Satisfactory

Comment

Cords in good condition



Are roofing operations being performed safely?

Satisfactory

Is demolition work being done safely?

N/A

Are all other tasks being performed safely?

Satisfactory

Any other items?

N/A

