



# PROJECT INSPECTION

Generated by Safety Compliance App [www.safetycompliance.com](http://www.safetycompliance.com) | [www.safetycomplianceapp.com](http://www.safetycomplianceapp.com)

<b>Company</b>	Mark Wilson Construction, Inc	<b>Type of Inspection:</b>	General Construction
<b>Project</b>	Clovis DO Expansion	<b>Date of Inspection</b>	September 13, 2024
<b>Inspector Name</b>	Jeremy Nagy	<b>Time of Inspection</b>	11:23 AM

## NOTES

19 Items Inspected	14 Satisfactory	0 Unsatisfactory	5 N/A
-----------------------	--------------------	---------------------	----------

8/13/24  
 Weather: 94/62  
 AQI=31 Good

Site Activities: Site concrete, irrigation, FID RCP piping install, lath, metal stud framing, MEP rough in, insulation

## INSPECTION ITEMS

### General

Is emergency equipment available, including first aid kit(s) and fire extinguisher(s)?

**Comment**

Type your custom comment...

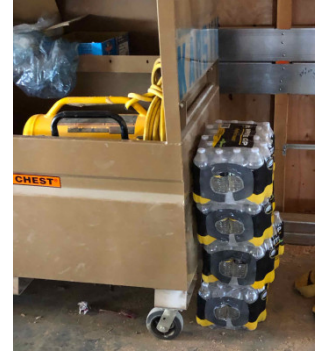


Is safety documentation available (Written Safety Programs, SDS, Tailgate Meetings)

Is drinking water and shade set up sufficient for the amount of workers?

Comment

Type your custom comment...



Are emergency and labor law postings in place?

Comment

Type your custom comment...



Is Personal Protective Equipment being worn as required?

Comment

Type your custom comment...



Are scaffolding safety procedures being followed?

Comment

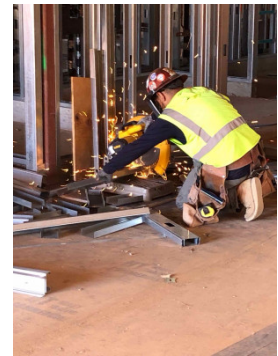
Type your custom comment...



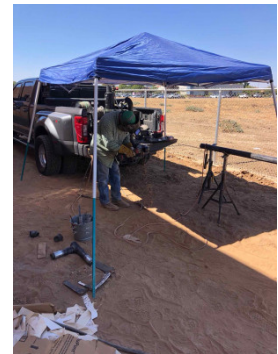
**Are hand and power tools being used safely?**

**Comment**

Type your custom comment...



Type your custom comment...



**Is good housekeeping being maintained?**

**Is fall protection in place where required?**

**Is trenching & excavation work being done safely?**

**Comment**

Type your custom comment...



Are confined space safety procedures being followed?

Are scissor lifts / elevated platforms being used safely?

Comment

Type your custom comment...



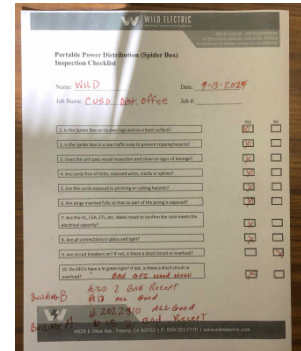
Are boom lifts and other aerial devices being used safely?

Is heavy equipment being used safely?

Are electrical items being used safely?

Comment

Wild Electrical performed weekly spider box and temp power inspection



Are roofing operations being performed safely?

Is demolition work being done safely?

**Are all other tasks being performed safely?**

**S**

**Any other items?**