



# PROJECT INSPECTION

Generated by Safety Compliance App [www.safetycompliance.com](http://www.safetycompliance.com) | [www.safetycomplianceapp.com](http://www.safetycomplianceapp.com)

|                       |                               |                            |                      |
|-----------------------|-------------------------------|----------------------------|----------------------|
| <b>Company</b>        | Mark Wilson Construction, Inc | <b>Type of Inspection:</b> | General Construction |
| <b>Project</b>        | Clovis DO Expansion           | <b>Date of Inspection</b>  | October 03, 2024     |
| <b>Inspector Name</b> | Jeremy Nagy                   | <b>Time of Inspection</b>  | 01:03 PM             |

## NOTES

|                       |                    |                     |          |
|-----------------------|--------------------|---------------------|----------|
| 19<br>Items Inspected | 15<br>Satisfactory | 0<br>Unsatisfactory | 4<br>N/A |
|-----------------------|--------------------|---------------------|----------|

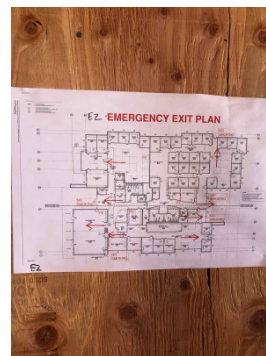
## INSPECTION ITEMS

### General

Is emergency equipment available, including first aid kit(s) and fire extinguisher(s)? Satisfactory

#### Comment

Emergency maps posted throughout project buildings



First aid kit with job boxes



First aid kit in job trailer



Is safety documentation available (Written Safety Programs, SDS, Tailgate Meetings)

Satisfactory

Comment

Available in project trailer



Is drinking water and shade set up sufficient for the amount of workers?

Satisfactory

Comment

Are emergency and labor law postings in place?

Satisfactory

Comment

Posted in trailer



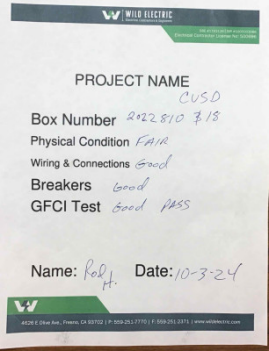
Is Personal Protective Equipment being worn as required?

Satisfactory

Comment

Are scaffolding safety procedures being followed?

Satisfactory

|  |   |
|--|---|
| Are hand and power tools being used safely?                | Satisfactory  |
| Comment  |   |
| Is good housekeeping being maintained?                     | Satisfactory  |
| Is fall protection in place where required?                | Satisfactory  |
| Is trenching & excavation work being done safely?          | Satisfactory  |
| Are confined space safety procedures being followed?       | N/A   |
| Are scissor lifts / elevated platforms being used safely?  | Satisfactory  |
| Are boom lifts and other aerial devices being used safely? | N/A   |
| Is heavy equipment being used safely?                      | Satisfactory  |
| Comment  |   |
| Are electrical items being used safely?                    | Satisfactory  |
| Comment  |   |
| Spider boxes inspected by electrical contractor.           |  |
| Are roofing operations being performed safely?             | Satisfactory  |
| Is demolition work being done safely?                      | N/A   |
| Are all other tasks being performed safely?                | Satisfactory  |
| Any other items?   | N/A   |