

SAFETY INSPECTION REPORT

CONDUCTED FOR:
Mark Wilson Construction, Inc.

PROJECT:
Juston Garza Athletic Complex Increment 2



INSPECTION TYPE:
General Construction

INSPECTOR : KIM BURGESS
DATE : SEPTEMBER 09, 2024
CITY : FRESNO
STATE : CA

Safety Compliance Company is not responsible for unsafe conditions and situations not seen during this inspection. The items listed above represent only what was seen by the Safety Compliance Company Representative at the time of the inspection. Safety Compliance Company is not responsible for any ongoing unsafe condition(s) whether seen or unseen. In addition, Safety Compliance Company does not have the authority or authorization to approve, certify, or warranty any safety equipment or safety device. This agreement also indemnifies Safety Compliance Company of any omission, gross negligence, willful misconduct related to this report. Under Federal, State and Local Law, it is the responsibility of the employer and all subcontractors to mark all hazards with appropriate signs

SUMMARY OF INSPECTION

53
Items Inspected

25
Satisfactory

1
Unsatisfactory

27
N/A

Valley unique electric only sub on site.

Met matt in the trailer and walked the site.

Items noted:

IIPP current.

First Aid kit stocked.

Postings visible in trailer.

Matt and Sergio first aid certification not current.

INSPECTION ITEMS

Documentation

Site Contact

Satisfactory

Comment

Matt on site, Sergio in trailer.

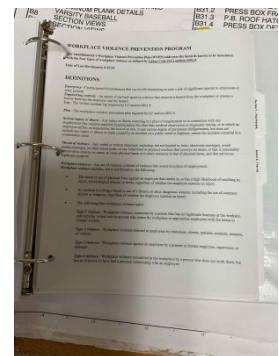
-

Safety Program (Including IIPP)

Satisfactory

Comment

Workplace violence program in the IIPP.

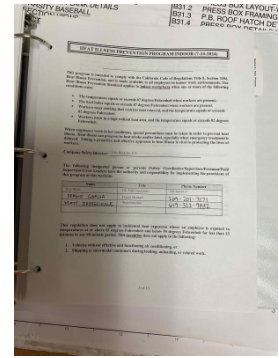


Heat Illness Prevention Program

Satisfactory

Comment

Both outdoor and indoor heat programs also in the IIPP.



Safety Data Sheets

Satisfactory

Daily Inspections

Satisfactory

Comment

Daily inspections are being performed

-

Tailgate Meetings

Satisfactory

Comment

Tailgates are being conducted at least every 10 working days

-

Sub-Contractor Meetings

N/A

OSHA Permits

Satisfactory

Labor Law Postings

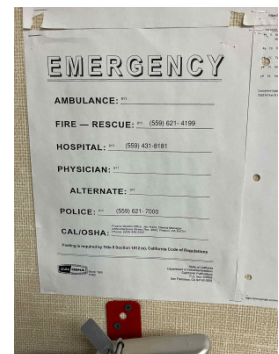
Satisfactory

Emergency / Other Postings

Satisfactory

Comment

Type your custom comment...



First Aid / CPR Certification	Unsatisfactory
Comment	
Certification not current.	-

Emergency Items

Access / Egress	Satisfactory
------------------------	---------------------

Elevator for Hoisting Workers (if needed)	N/A
--	------------

Fire Extinguisher(s)	Satisfactory
Comment	
Fire extinguishers fully charged and inspected monthly.	-

First Aid Kit(s)	Satisfactory
Comment	
First aid kit stocked.	-

Eye Wash Station	N/A
Comment	
Eyewash located in first aid kit. Expiration date 2025.	-

Other Fire Fighting Equipment (If needed)	N/A
--	------------

General Items

Restrooms	Satisfactory
------------------	---------------------

Hand Washing Stations	Satisfactory
Comment	
Verified soap dispenser full and towels set on wash stations. Water supply also good at wash station.	-

Waste Containers	Satisfactory
-------------------------	---------------------

Potable Water	Satisfactory
Comment	
Mark wilson has cases of water in job trailer.	-

Shade	Satisfactory
--------------	---------------------

Tools & Equipment

Power Tools	Satisfactory
--------------------	---------------------

Hand Tools	Satisfactory
-------------------	---------------------

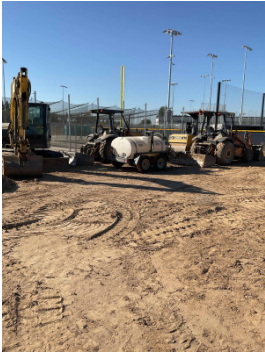
Powder Actuated Tools	N/A
------------------------------	------------

Pneumatic Nailers	N/A
--------------------------	------------

Mobile Elevated Work Plarforms (MEWP's)	N/A
--	------------

Powered Industrial Trucks	N/A
----------------------------------	------------

Heavy Mobile Equipment (Excavators, Loaders, etc)	N/A
--	------------

Comment	
No equipment operated during inspection.	

Cranes	N/A
---------------	------------

Cylinder Storage	N/A
-------------------------	------------

Ladders	N/A
----------------	------------

Comment

No ladders were in use during inspection.

-

Operations

Personal Protective Equipment

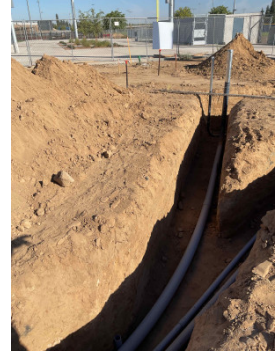
Satisfactory

Trenching & Excavation

Satisfactory

Comment

Trenching in compliance. Trenches no more than 4 feet deep.



Caution tape present around trench when workers are not present.



Fall Protection

N/A

Guardrails

N/A

Floor / Wall Openings

N/A

Supported Scaffolding

N/A

Comment

No scaffolding on site.

-

Mobile Scaffolding

N/A

Suspended Scaffolding	N/A
------------------------------	------------

Confined Spaces	N/A
------------------------	------------

Impalement Hazards	Satisfactory
---------------------------	---------------------

Comment	
Caps in place thru out sites.	

Traffic Control	N/A
------------------------	------------

Roofing Operations	N/A
---------------------------	------------

Housekeeping	Satisfactory
---------------------	---------------------

Demolition	N/A
-------------------	------------

Silica Control	Satisfactory
-----------------------	---------------------

Comment	
Water buffalo on site for dust control.	

Rigging Operations	N/A
---------------------------	------------

Hot Work	N/A
Electrical Safety	Satisfactory
Lockout / Tagout	N/A
Stairways, Ramps, Runways	N/A
Other Items (that were observed)	N/A