



PROJECT INSPECTION

Generated by Safety Compliance App www.safetycompliance.com | www.safetycomplianceapp.com

Company	Pacific Hydrotech Corporation	Type of Inspection:	General Construction
Project	C2304 Well 32 Santa Ana	Date of Inspection	November 12, 2024
Inspector Name	Janell Gomez	Time of Inspection	08:59 AM

NOTES

19 Items Inspected	11 Satisfactory	0 Unsatisfactory	8 N/A
------------------------------	---------------------------	----------------------------	-----------------

INSPECTION ITEMS

General

Is emergency equipment available, including first aid kit(s) and fire extinguisher(s)?	Satisfactory
Comment	
Yes on-site	-

Is safety documentation available (Written Safety Programs, SDS, Tailgate Meetings)	Satisfactory
Comment	
Yes is on-site	-

Is drinking water and shade set up sufficient for the amount of workers?	Satisfactory
Comment	
Yes plenty of water on-site	-

Are emergency and labor law postings in place?	Satisfactory
Comment	
Yes posters are on site	-

Is Personal Protective Equipment being worn as required?	Satisfactory
---	---------------------

Comment

Yes, required PPE being worn



Are scaffolding safety procedures being followed?

N/A

Are hand and power tools being used safely?

Satisfactory

Comment

Yes hand tools being used safely

-

Is good housekeeping being maintained?

Satisfactory

Comment

Housekeeping being maintained



Is fall protection in place where required?

Satisfactory

Comment

Yes fall protection is installed



Is trenching & excavation work being done safely?

N/A

Are confined space safety procedures being followed?

N/A

Are scissor lifts / elevated platforms being used safely?

N/A

Are boom lifts and other aerial devices being used safely?

N/A

Is heavy equipment being used safely?

Satisfactory

Comment

Machinery on-site , currently not being used



Are electrical items being used safely?

N/A

Are roofing operations being performed safely?

N/A

Is demolition work being done safely?

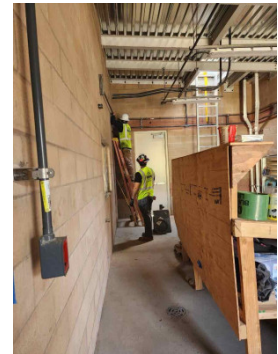
N/A

Are all other tasks being performed safely?

Satisfactory

Comment

Yes , southern electric is on-site working safely



Any other items?

Satisfactory